



Service Bulletin

Maintenance of Way Equipment

Date: 12.17.2018

RRP Service Bulletin No: RRP SB341

Title: Floating Frame Stop Kit

Rating:



ALERT

(Potential Problem)



INFORMATION

(Action Is Optional)



DIRECTIVE

(Action Is Required)



PRODUCT IMPROVEMENT

(Enhance Product)

Product Series: Dual Anchor Spreader Plate [DASP]

Serial No:

DAA-317-14	DAA-329-16	DAS-244-14	DASP-254-16
DAA-318-14	DAA-330-16	DAS-245-15	DASP-266-18
DAA-319-15	DAA-331-16	DAS-246-15	DASP-267-18
DAA-320-15	DAA-332-16	DAS-248-15	
DAA-322-15	DAA-333-16	DAS-250-16	
DAA-323-15	DAA-334-16	DAS-251-16	
DAA-324-15	DAA-335-16	DAS-252-16	
DAA-325-15	DAA-336-16	DAS-253-16	
DAA-327-16	DAA-337-16	DAS-255-16	
DAA-328-16	DAA-338-16		

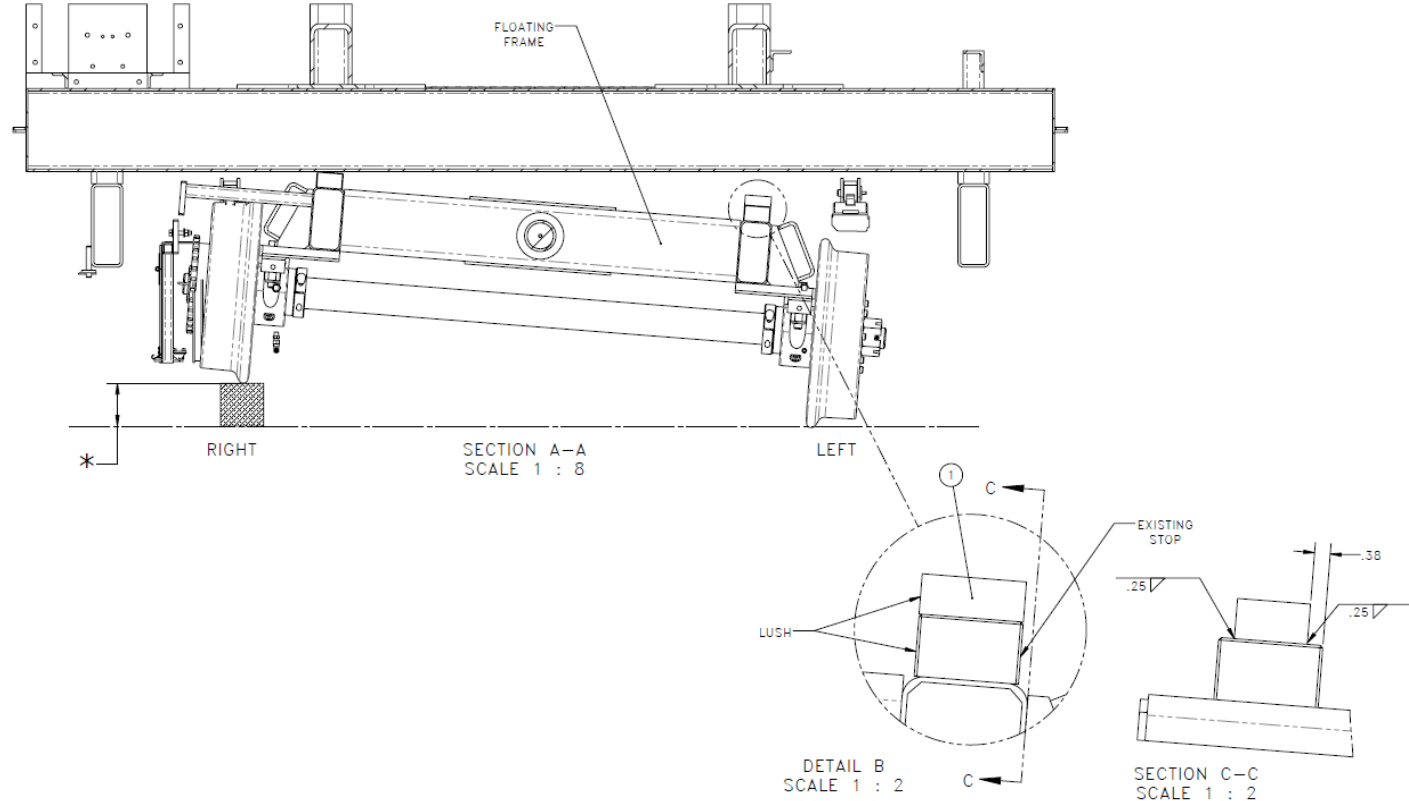
Summary: The Block Kit [RRP# 793043] has a stop block added to the floating axle to restrict the drop on the floating axle to resolve the turn table issue where the machine catches the front wheel on the rail when doing a spin.

Action: Weld block RRP# 319618 to the floating frame that is machined to a dimension that is the minimum amount of wheel drop per AREMA specs.

Completion: Continue with normal machine operation after completing this procedure

Kit Installation:

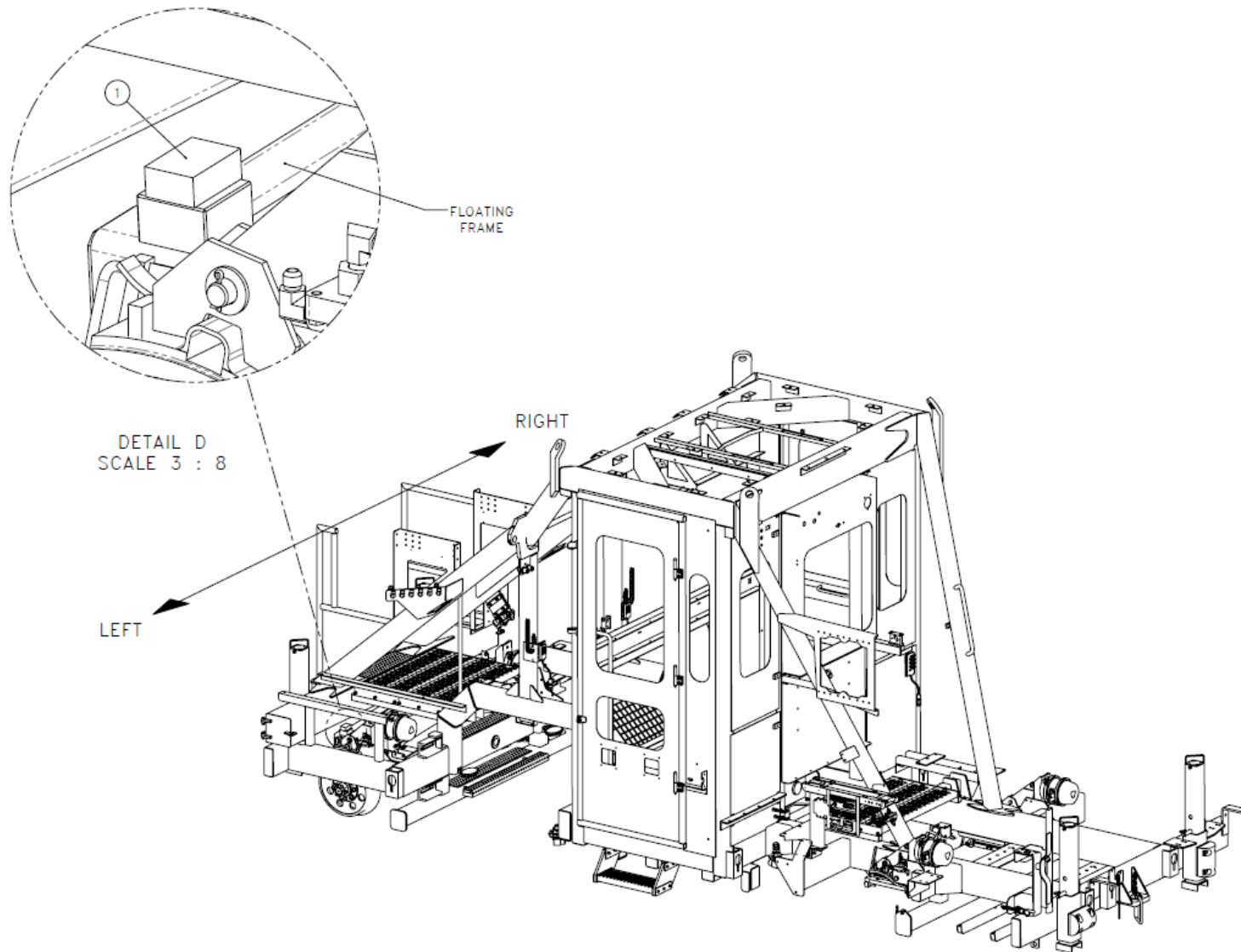
1. Jack / elevate the right side of the floating frame as far as possible.
 - Make sure to provide adequate support when elevating the floating frame.
 - This will provide maximum access for installation of the Floating Frame Stop Kit.
2. Locate and weld the stop block [RRP# 319618] per Detail B, Section C-C and Detail D. (See below.)

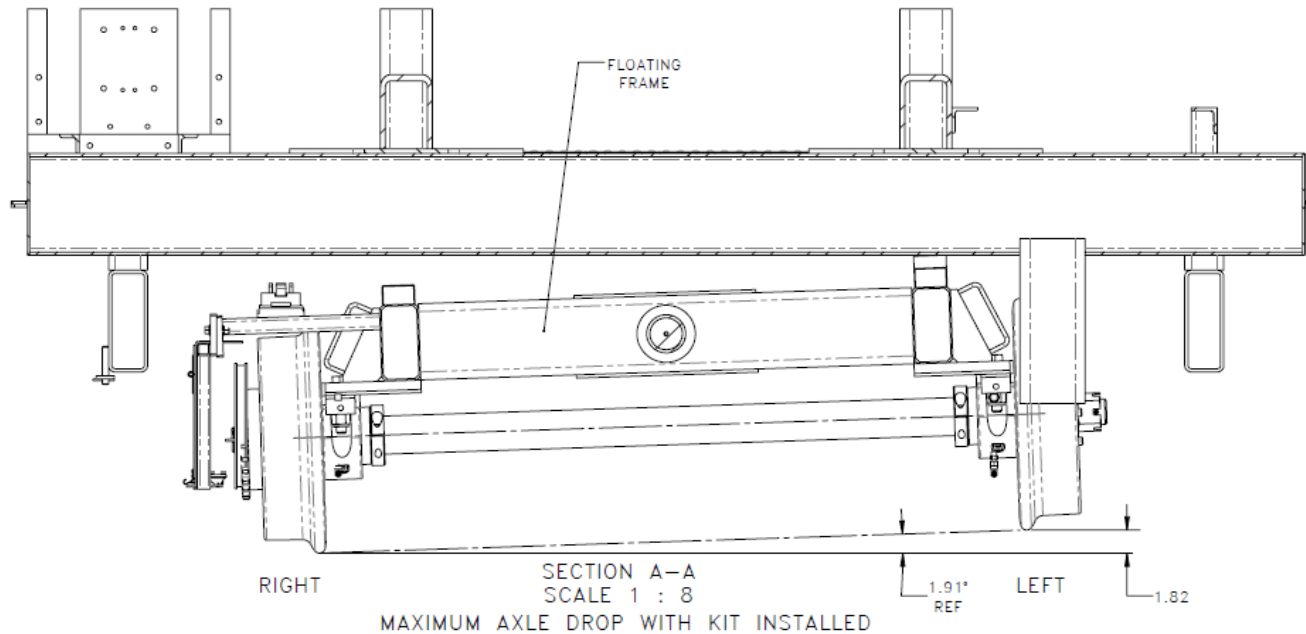




**RACINE
RAILROAD
PRODUCTS**

Racine Railroad Products
1955 Norwood Court
Mount Pleasant WI, 53403
(262) 637-9681
www.racinerailroad.com





Note:

Reference the AREMA Manual for Railway Engineering:

2.3.4 Wheels, Axles and Bearings: Frame and Suspension (2000)

- D. The frame must be sufficiently flexible or at least one axle must be free to float, so that any wheel can drop below the plane established by the other three wheels.

The amount of drop in inches shall be equal to, or more than the wheelbase of the machine in FEET divided by EIGHT.

$$\text{Wheelbase} = 174.30'' (14'-6.3'')$$

$$14.525''/8 = 1.82'' \text{ Drop}$$



Contact: If you have any questions or we can be of any service, please contact the Racine Railroad Products service department at (262)-637-9681 or custserv@racinerailroad.com.

Safety Terms



DANGER indicates a hazardous operating procedure, practice, or condition. If the hazardous situation is not avoided death or serious injury will occur.



WARNING indicates a hazardous operating procedure, practice, or condition. If the hazardous situation is not avoided death or serious injury could occur.



CAUTION indicates a potentially hazardous operating procedure, practice, or condition. If the hazardous situation is not moderate or minor injury could occur.

Note: Indicates an essential operating procedure, practice, or condition. No personal injury is possible.