

Service Bulletin

Maintenance of Way Equipment

Date: 6/05/2019

RRP Service Bulletin No: RRP SB345

Title: Advance Anchormatic Guide Wheel Hole enlargement

Rating:

ALERT
 (Potential Problem)

INFORMATION
 (Action Is Optional)

DIRECTIVE
 (Action Is Required)

PRODUCT IMPROVEMENT
 (Enhance Product)

Product Series: Advance Anchormatic

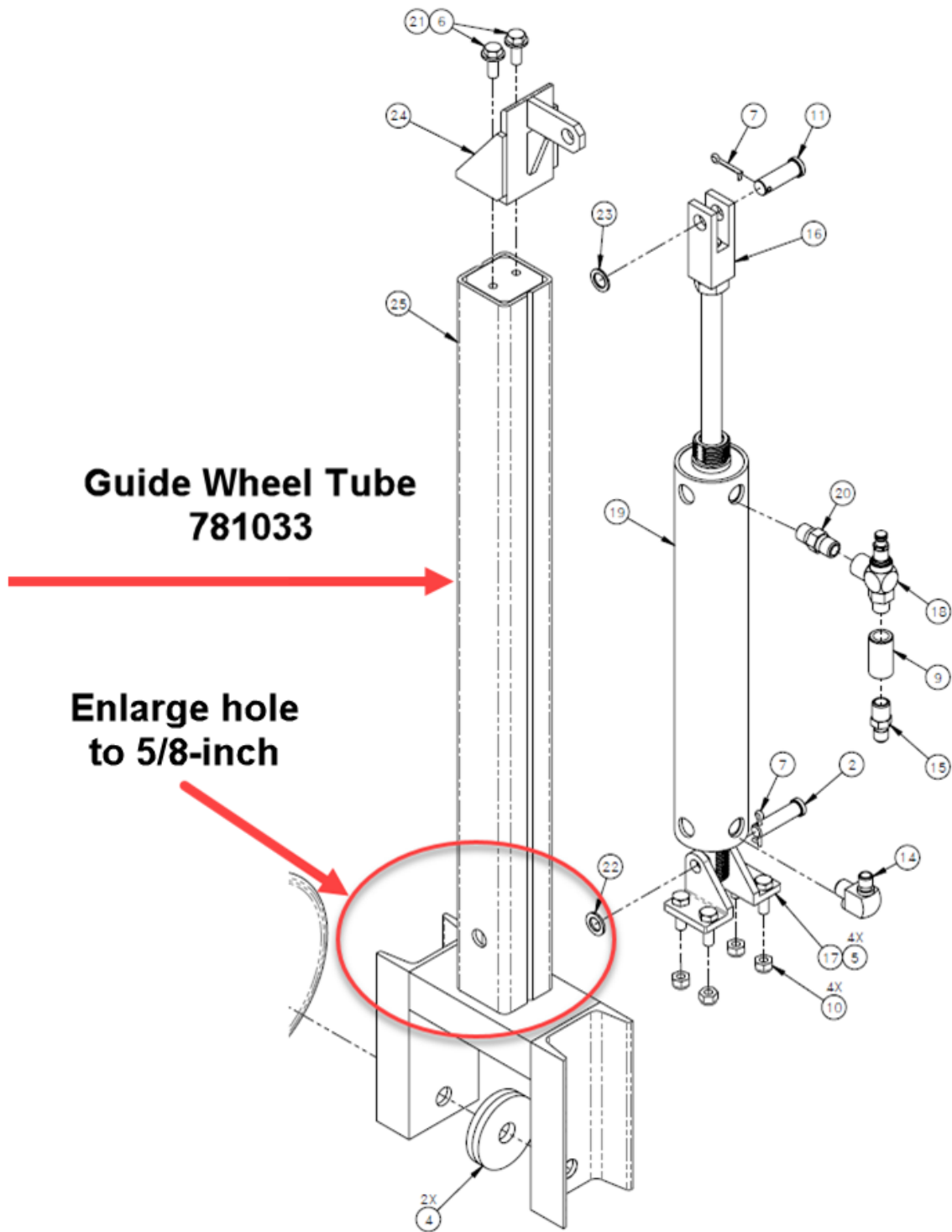
Serial No:

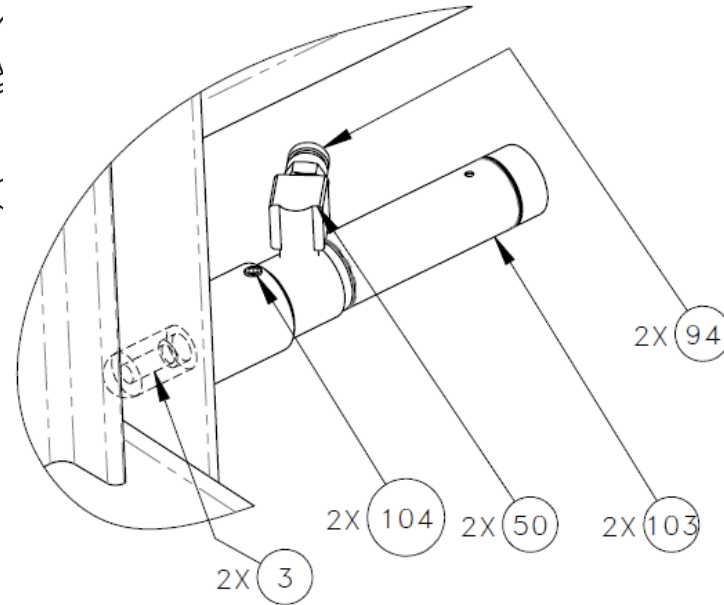
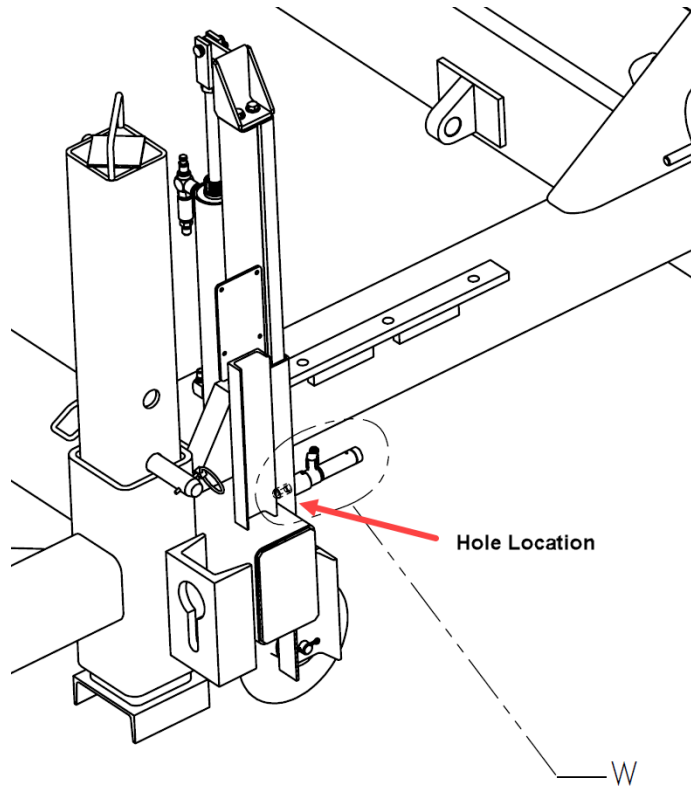
AAM-002-17	AAM-004
AAM-003-17	AAM-005
	AAM-006
	AAM-007

Summary:

Action: Make the hole larger to 5/8" in the Guide Wheel Tube RRP# 781033. See attached sheets for hole location.

Completion: Continue with normal machine operation after completing this procedure.





DETAIL W
SCALE 1 : 2

Contact: If you have any questions or we can be of any service, please contact the Racine Railroad Products service department at (262)-637-9681 or custserv@racinerailroad.com.

Safety Terms



DANGER indicates a hazardous operating procedure, practice, or condition. If the hazardous situation is not avoided death or serious injury will occur.



WARNING indicates a hazardous operating procedure, practice, or condition. If the hazardous situation is not avoided death or serious injury could occur.



CAUTION indicates a potentially hazardous operating procedure, practice, or condition. If the hazardous situation is not moderate or minor injury could occur.

Note: Indicates an essential operating procedure, practice, or condition. No personal injury is possible.