

Service Bulletin

Maintenance of Way Equipment

Date: 12/16/2020

RRP Service Bulletin No: RRP SB355

Title: Advance Tie Plate Inserter Guide Roller Plate

Rating:

ALERT
 (Potential Problem)

INFORMATION
 (Action Is Optional)

DIRECTIVE
 (Action Is Required)

PRODUCT IMPROVEMENT
 (Enhance Product)

Product Series: Advance Tie Plate Inserter [ATPI]

Serial No:

Serial No.	Machine No.	Customer
ATPI-002-17	915574	UPRR
ATPI-003-17	915574	UPRR
ATPI-004-17	915574	UPRR
ATPI-005-17	915574	UPRR
ATPI-006-17	915574	UPRR
ATPI-007-17	915574	UPRR
ATPI-008	933574	CP
ATPI-009	935574	CN
ATPI-010	935574	CN
ATPI-011	915574	UPRR
ATPI-012	915574	UPRR
ATPI-013	915574	UPRR
ATPI-014	932574	BNSF
ATPI-015	932574	BNSF
ATPI-016	932574	BNSF
ATPI-017	932574	BNSF

Serial No.	Machine No.	Customer
ATPI-019	935588	CN-W
ATPI-020	935588	CN-W
ATPI-021	945588	CN-S
ATPI-022	945588	CN-S
ATPI-023	931588	UPRR
ATPI-024	931588	UPRR
ATPI-025	931588	UPRR
ATPI-026	931588	UPRR
ATPI-027/036	913588	CP
APT-028/037	913588	CP
ATPI-029/038	913588	CP
ATPI-030	935588	CN-W
ATPI-031	935588	CN-W
APT-032	933588	CP
ATPI-033/035	933588	CP

Summary:

Workhead Guide Roller shoulder bolt to be replaced with a longer bolt and flat washer to better hold against the shoulder.

Action:

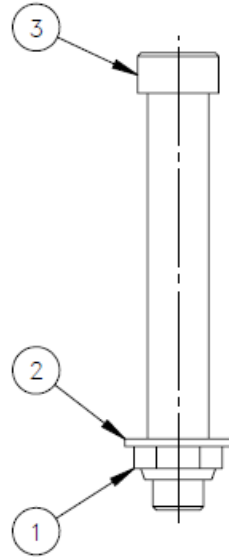
Drill out the counter-bore hole to a thru-hole on Guide Roller Plate (p/n 397933). See Instructions on page 3.

Completion / Resolution:

Continue with normal machine operation after replacing the Guide Roller shoulder bolt.

Kit, Workhead Guide Roller Shoulder Bolt / RRP# 793100 [Rev 1 (12.2020)]

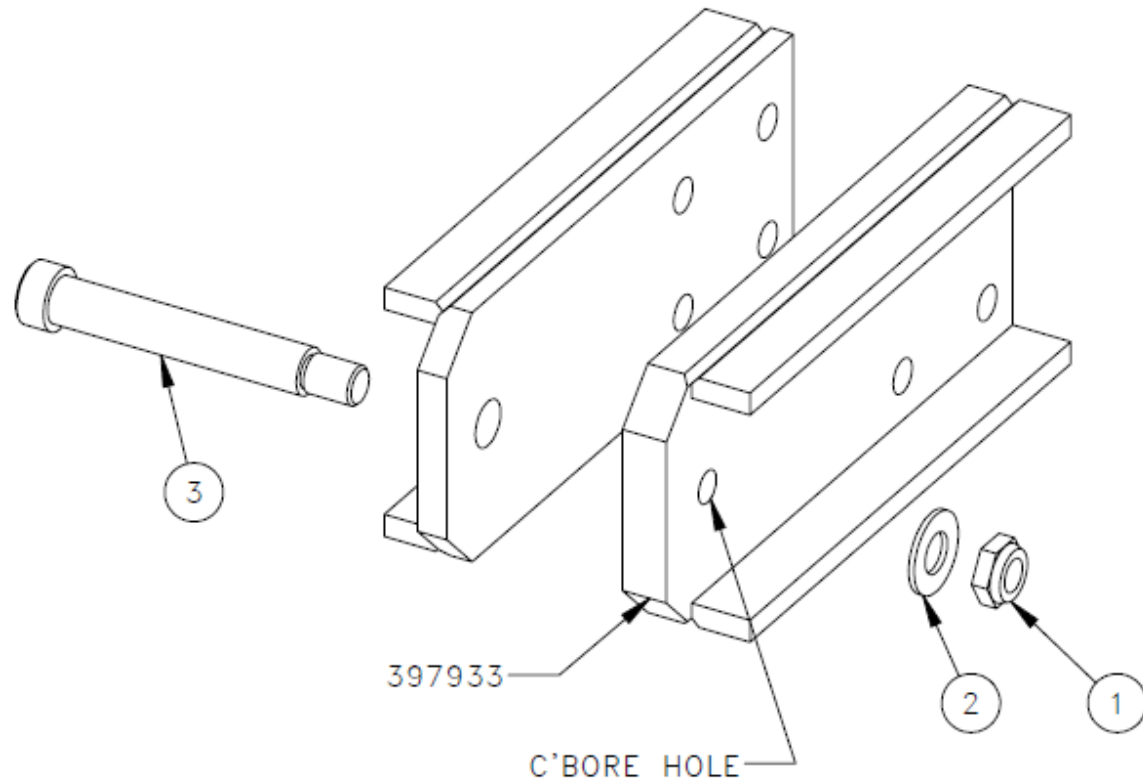
NO.	QTY	DESCRIPTION	PART NO.
1	4	NUT, HEX ES JAM: .62-11	467679
2	4	WASHER, FLT: .62	491415
3	4	SCR, SOC SHLD: .75 X 4.25	491640
4	1	INSTRUCTIONS, WORKHEAD GUIDE ROLLER SHOULDER BOLT KIT	800343



Instructions

1. Drill out $\varnothing.752$ existing C'Bore hole on Guide Roller Plate 397933 to make thru-hole.
2. Replace (4x) 491207 shoulder bolts with (4x) 491640.
3. Add (4x) 491415 flat washers and (4x) 467679 nuts.

NO.	QTY	DESCRIPTION	PART NO.
1	REF	NUT, HEX ES JAM: .62-11	467679
2	REF	WASHER, FLT: .62	491415
3	REF	SCR, SOC SHLD: .75 X 4.25	491640



Contact: If you have any questions or we can be of any service, please contact the Racine Railroad Products Service Department at (262)-637-9681 or fieldservice@racinerailroad.com.

Safety Terms



DANGER indicates a hazardous operating procedure, practice, or condition. If the hazardous situation is not avoided death or serious injury will occur.



WARNING indicates a hazardous operating procedure, practice, or condition. If the hazardous situation is not avoided death or serious injury could occur.



CAUTION indicates a potentially hazardous operating procedure, practice, or condition. If the hazardous situation is not moderate or minor injury could occur.

Note: Indicates an essential operating procedure, practice, or condition. No personal injury is possible.