

Service Bulletin

Maintenance of Way Equipment

Date: 6.17.2021

RRP Service Bulletin No: RRP SB364

Title: 3.5 Diameter Axle Field Retrofit Kit

Rating:



ALERT
(Potential Problem)



INFORMATION
(Action Is Optional)



DIRECTIVE
(Action Is Required)



PRODUCT IMPROVEMENT
(Enhance Product)

Product Series: Advanced Tie Plate Inserter [ATPI]

Serial No:

ATPI-014	932574	BNSF	X3800191
ATPI-015	932574	BNSF	X3800192
ATPI-016	932574	BNSF	X3800193
ATPI-017	932574	BNSF	X3800194

ATPI-008	933574	CP	5014-19
----------	--------	----	---------

ATPI-009	935574	CN	438-61
ATPI-010	935574	CN	438-62

ATPI-002-17	915574	UPRR	RLPI-1701
ATPI-003-17	915574	UPRR	RLPI-1702
ATPI-004-17	915574	UPRR	RLPI-1703
ATPI-005-17	915574	UPRR	RLPI-1704
ATPI-006-17	915574	UPRR	RLPI-1705

ATPI-007-17	915574	UPRR	RLPI-1706
ATPI-011	915574	UPRR	RLPI-1801
ATPI-012	915574	UPRR	RLPI-1802
ATPI-013	915574	UPRR	RLPI-1803

Summary:

Due to the differences in axle loading between the front and rear axles on the ATPI machines, an axle upgrade kit is being offered for the front axle. The larger axle allows for the use of larger pillow block bearings, thus extending the bearing life of the front axle.

Action:

Use the RRP# 793107 3.50 Diameter Axle Kit and the RRP# 800348 Instructions to replace the 3.00 diameter axle with the 3.5 diameter axle. The 793107 kit includes the axle assembly and new bearing mounting pads that have to be welded onto the frame after the old ones are cut off.

Completion / Resolution:

Continue with normal machine operation after installing the 3.50 diameter axle.

Changing out a 3.00 Diameter Axle with a 3.50 Diameter Axle Instructions

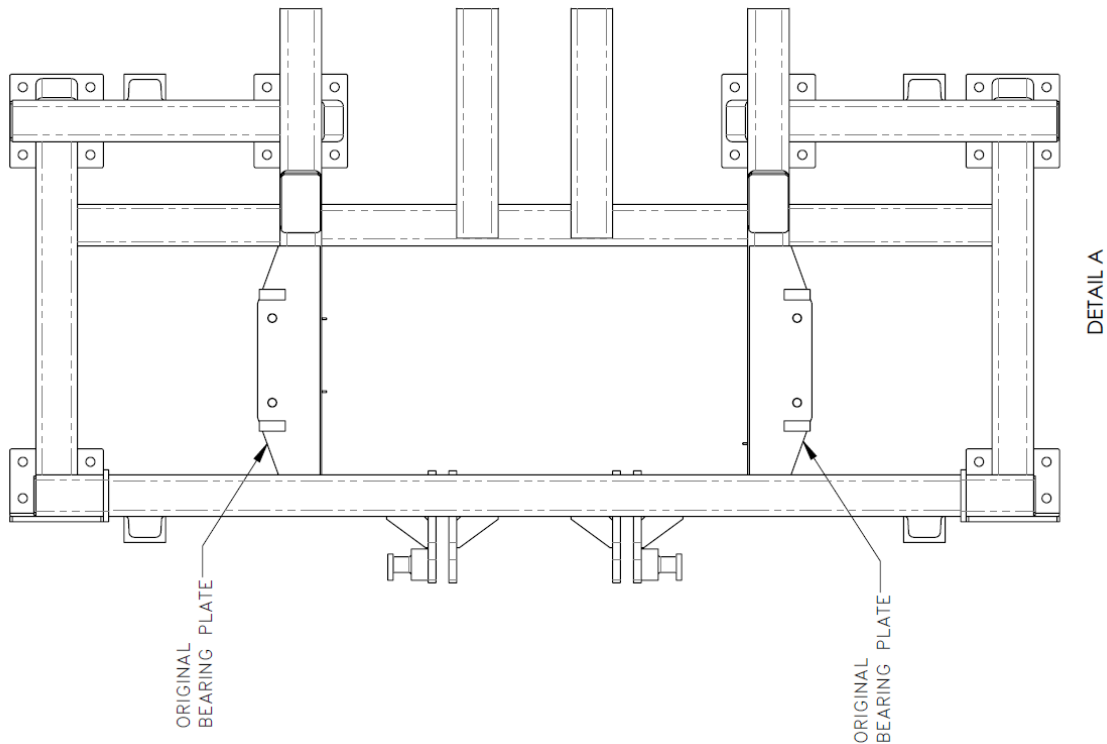
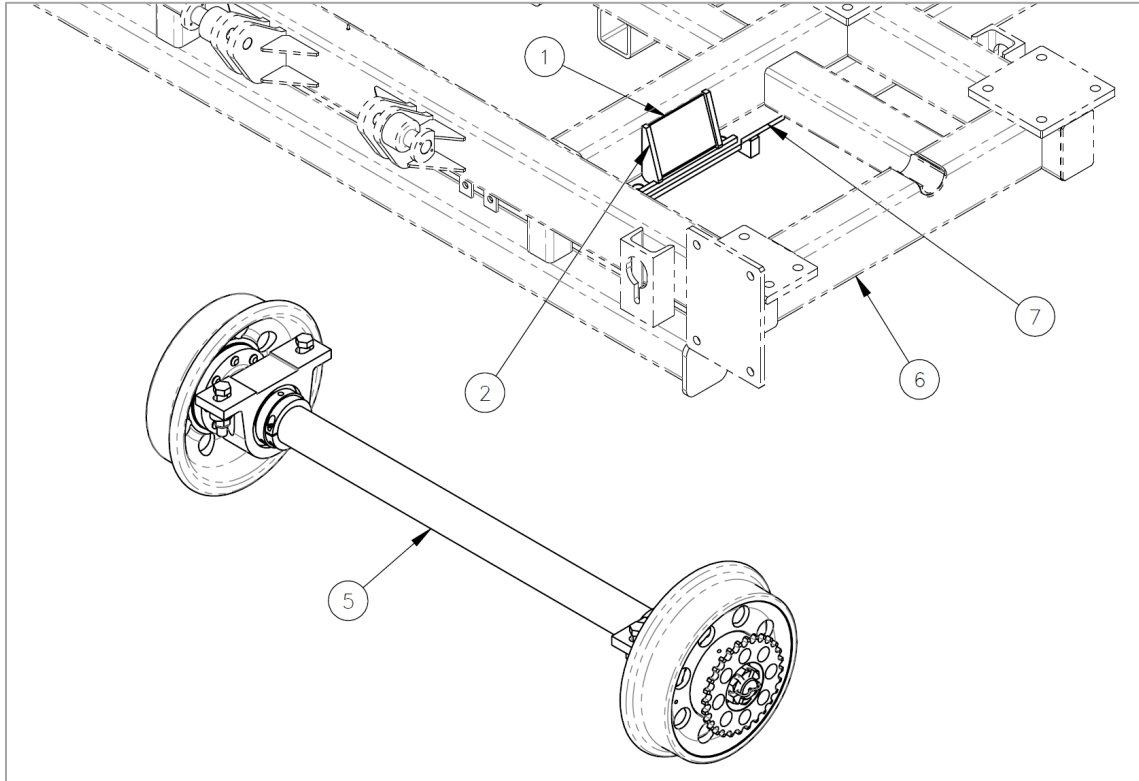
Note: See pages 3-5 for reference drawings.

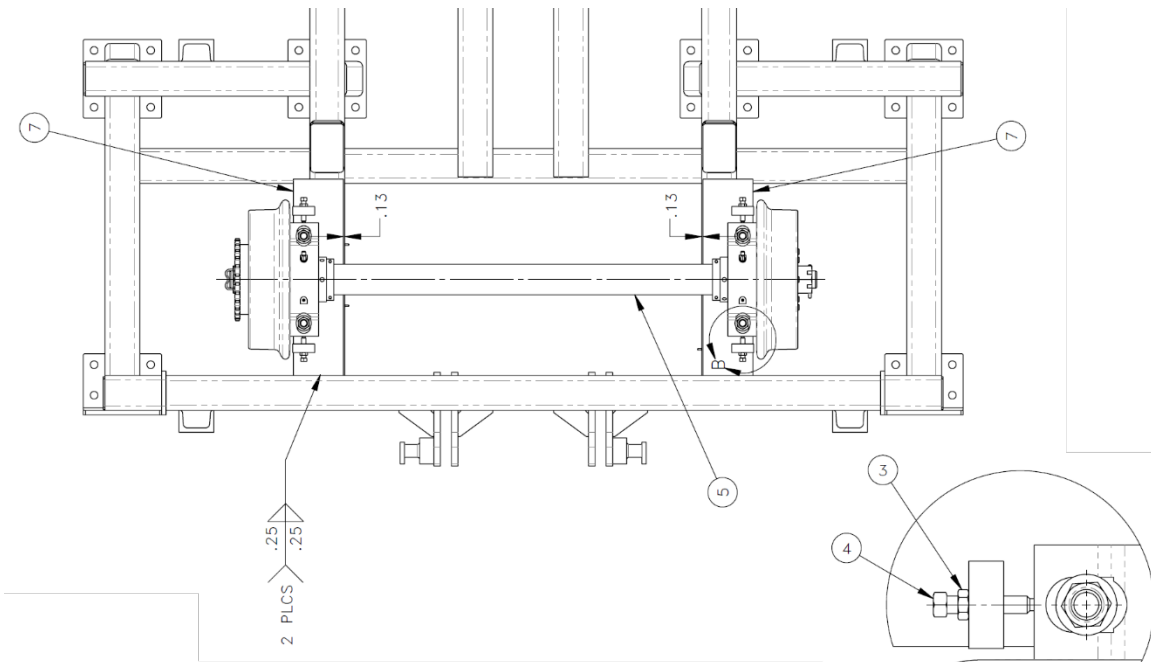
1. Remove 3.00 diameter front axle.
2. Cut off original bearing plates. See Detail A.
3. Weld new bearing plates ⑦ [2 pieces].
4. Weld flats (stiffeners) ① [2 pieces].
5. Weld gussets ② [4 pieces].
6. Install ③ 718912 axle, 3.50 diameter ins, set screws, and jam nuts.

Parts List

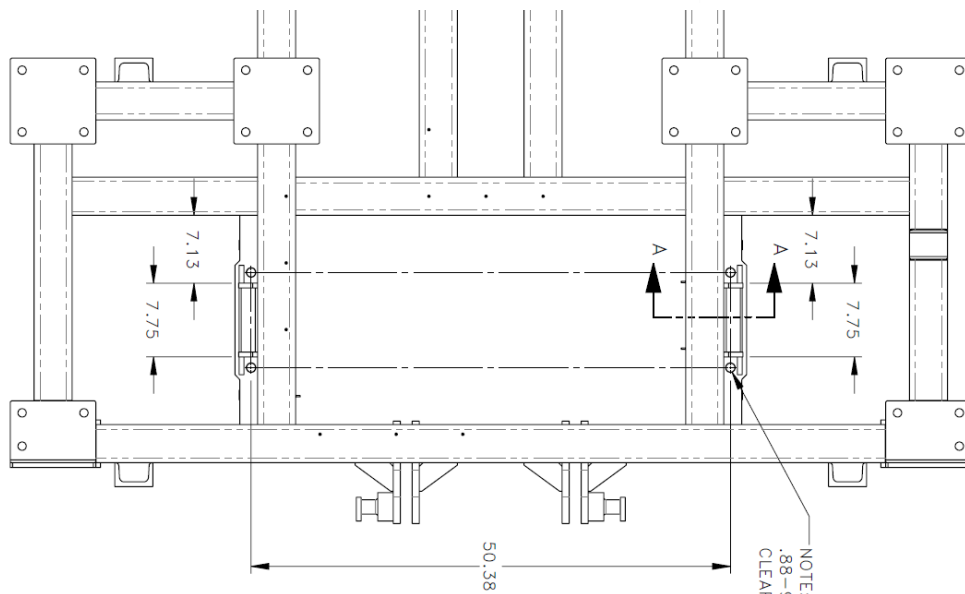
NO.	QTY	DESCRIPTION	PART NO.
1	2	FLAT	319694
2	4	GUSSET, .5 X 2 X 5.5	319696
3	4	NUT, HEX JAM: .5-13	491298
4	4	SCR, SQ SET: .5-13 X 2.5	491521
5	1	AXLE, 3.50 DIA INS #80 28T	718912
6	REF	FRAME, INTERMEDIATE	781158
7	2	PLATE, BEARING	781623
8	1	INSTRUCTIONS, 3.50 DIA AXLE KIT	800348

Drawings for Reference



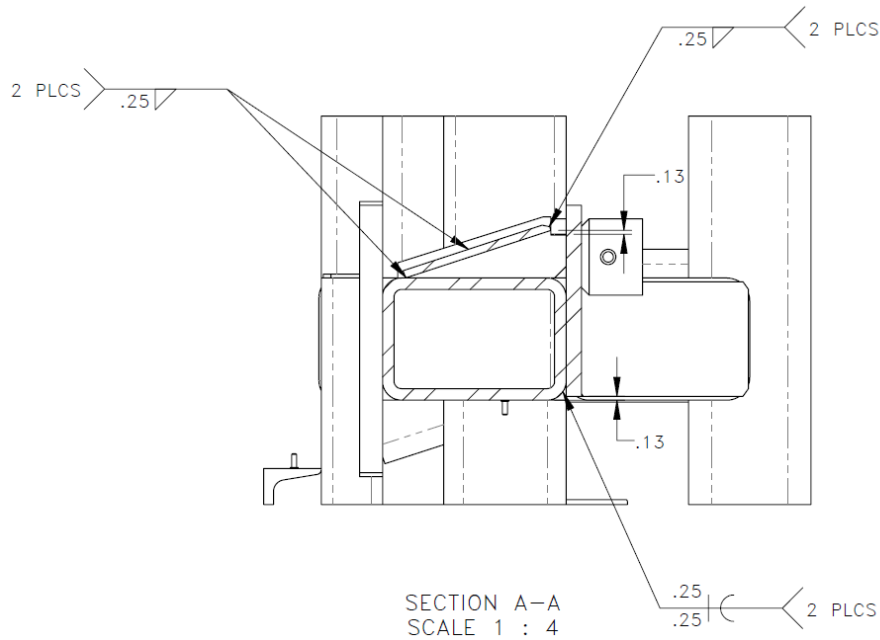
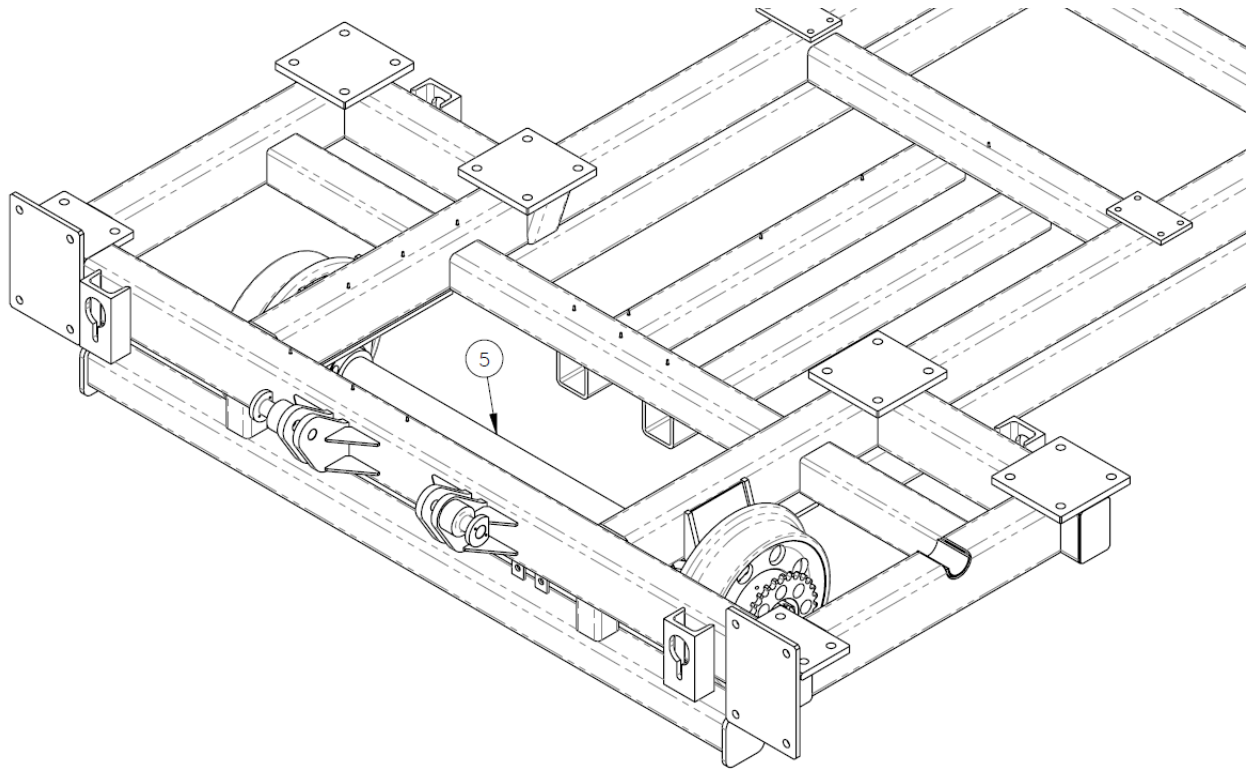


DETAIL B
 SCALE 1 : 3



NOTE:
 .88-9 HEX HD BOLT MUST
 CLEAR AND NOT ROTATE





Contact: If you have any questions or we can be of any service, please contact the Racine Railroad Products Service Department at (262)-637-9681 or fieldservice@racinerailroad.com.