

Service Bulletin

Maintenance of Way Equipment

Date: 04/15/2021

RRP Service Bulletin No: RRP SB368

Title: CN ATPI Workhead Guide Roller Replacement Field Kit (Left & Right Side).

Rating:

ALERT
 (Potential Problem)

INFORMATION
 (Action Is Optional)

DIRECTIVE
 (Action Is Required)

PRODUCT IMPROVEMENT
 (Enhance Product)

Product Series: Advanced Tie Plate Inserters

Serial No:

ATPI-009	935574	CN	438-61
ATPI-010	935574	CN	438-62
ATPI-019	935588	CN-W	CN43865
ATPI-020	935588	CN-W	CN43866
ATPI-021	945588	CN-S	CN43863
ATPI-022	945588	CN-S	CN43864
ATPI-030	935588	CN-W	CN43867
ATPI-031	935588	CN-W	CN43868
APT-042	933588	CN	CN43869
ATPI-043	933588	CN	CN43870

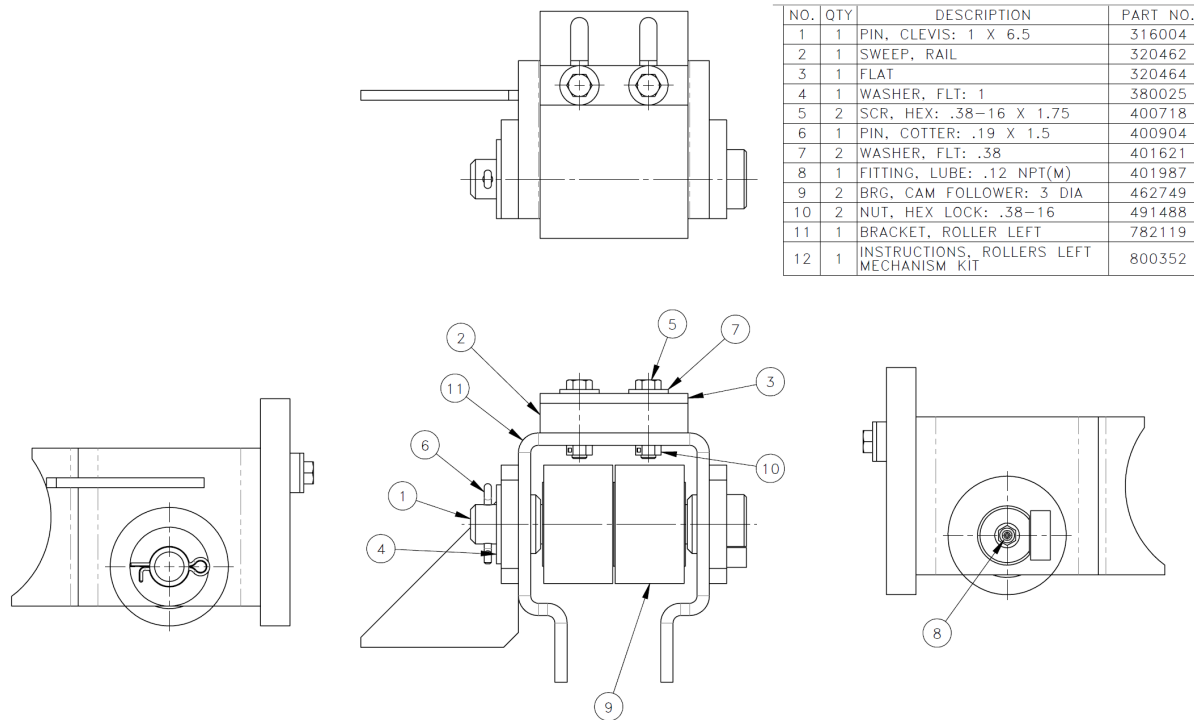
Summary: Use RRP# 793111 Left Guide Roller Kit and RRP# 793112 Right Guide Roller Kit to replace workhead guide rollers as needed.

Action: Follow the directions on the next pages to replace the left and right workhead guide rollers.

Completion / Resolution: Continue with normal machine operation after replacing the guide rollers.

Contact: If you have any questions or we can be of any service, please contact the Racine Railroad Products Service Department at (262)-637-9681 or fieldservice@racinerailroad.com.

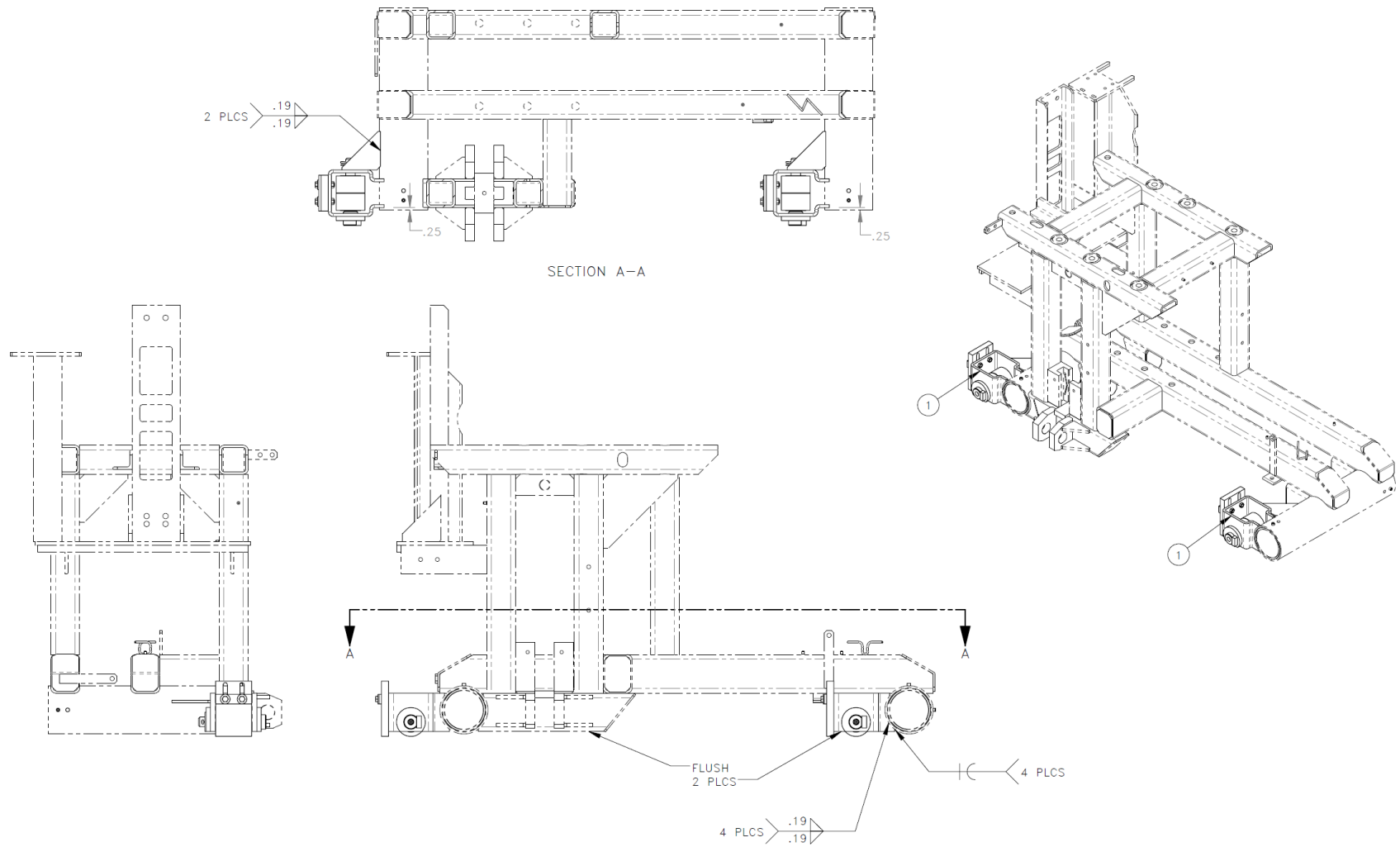
RRP# 793111: Left Rollers Kit



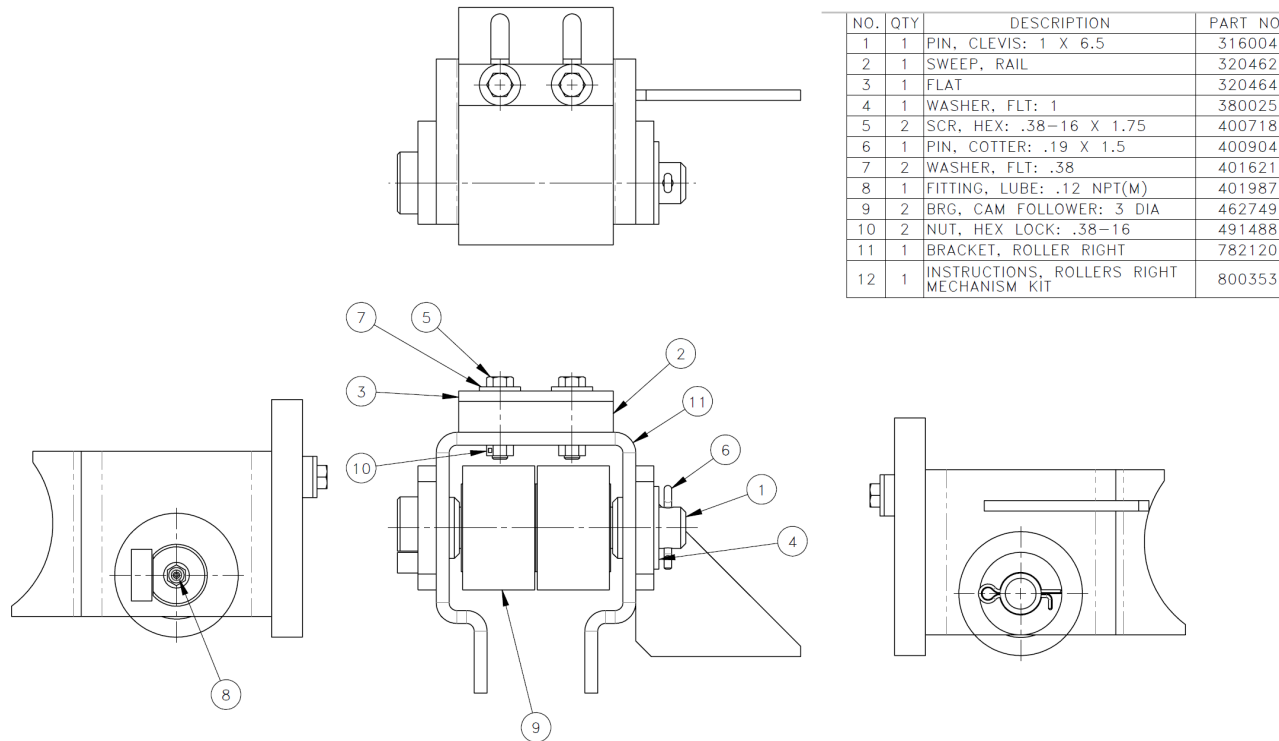
Instructions: Left Rollers Mechanism Kit

1. Remove existing rollers.
 Cut off existing roller mounts and grind area smooth.
2. Position and tack each supplied roller mounts as shown (see next page).
3. Place arc of roller mount and gusset onto tube (**flush with frame tube, .25 inch from tube end & parallel to the frame**) and weld into place.

4. Prime and paint area.



RRP# 793112: Right Roller Kit



Instructions: Right Rollers Mechanism Kit

1. Remove existing rollers.
 Cut off existing roller mounts and grind area smooth.
2. Position and tack each supplied roller mounts as show (see next page).
3. Place arc of roller mount and gusset onto tube (**flush with frame tube, .25 inch from tube end & parallel to the frame**) and weld into place.

4. Prime and paint area.

