

Service Bulletin

Maintenance of Way Equipment

Date: 12.08.2021

RRP Service Bulletin No: RRP SB369

Title: Toolbox Soft Close Kit

Rating:



ALERT
 (Potential Problem)



INFORMATION
 (Action Is Optional)



DIRECTIVE
 (Action Is Required)



PRODUCT IMPROVEMENT
 (Enhance Product)

Product Series: Dual Anchor Adjuster [DAA], Dual Anchor Spreader [DAS], Dual Clip Applicator [DCA], and Dual Anchor Spreader Plate [DASP]

Serial Numbers

Dual Anchor Adjuster [DAA]

DAA-355	931583	UPRR	AASQ-1901
DAA-356	931583	UPRR	AASQ-1902
DAA-357	931583	UPRR	AASQ-1903
DAA-358	931583	UPRR	AASQ-1904

DAA-359	913583	CP RAIL	8010-01
DAA-360	913583	UPRR	AASQ-2002
DAA-363	931583	UPRR	AASQ-2101
DAA-364	913583	UPRR	AASQ-2102

Dual Anchor Spreader [DAS]

DAS-275	931584	UPRR	AASP-1901
DAS-276	931584	UPRR	AASP-1902
DAS-282	931584	UPRR	AASP-2001

DAS-283	931584	CP RR	5013-18
DAS-297	931584	UPRR	AASP-2101
DAS-298	931584	UPRR	AASP-2102

Dual Clip Applicator [DCA], and

DCA-161	931585	UPRR	ECAM-1901
DCA-162	931585	UPRR	ECAM-1902
DCA-163	931585	UPRR	ECAM-1903
DCA-164	931585	UPRR	ECAM-1904

DCA-165	944585	WMATA	EC01
DCA-166	944585	WMATA	EC02
DCA-167	944585	WMATA	EC03
DCA-168	944585	WMATA	EC04

Dual Anchor Spreader Plate [DASP]

DASP-270	935582	CN-W	CN64084
DASP-277	935582	CN-W	CN64085
DASP-278	945582	CN-S	CN64082
DASP-279	945582	CN-S	CN64083
DASP-280	955582	CN-E	CN64080
DASP-281	955582	CN-E	CN64081
DASP-284	935582	CN-W	CN64094
DASP-285	935582	CN-W	CN64095
DASP-286	935582	CN-W	CN64096
DASP-287	935582	CN-W	CN64097

DASP-288	955582	CN-S	CN64090
DASP-289	945582	CN-S	CN64091
DASP-290	945582	CN-E	CN64086
DASP-291	955582	CN-E	CN64087
DASP-292	945582	CN-S	CN64088
DASP-293	945582	CN-S	CN64089
DASP-294	935582	CN-W	CN64092
DASP-295	935582	CN-W	CN64093
DASP-296	945582	CN-S	CN64098

Summary: RRP# 793117 Toolbox Soft Close Kit created for front toolbox.

Action: Install RRP# 793117 Toolbox Soft Close Kit to the front toolbox on the machine.

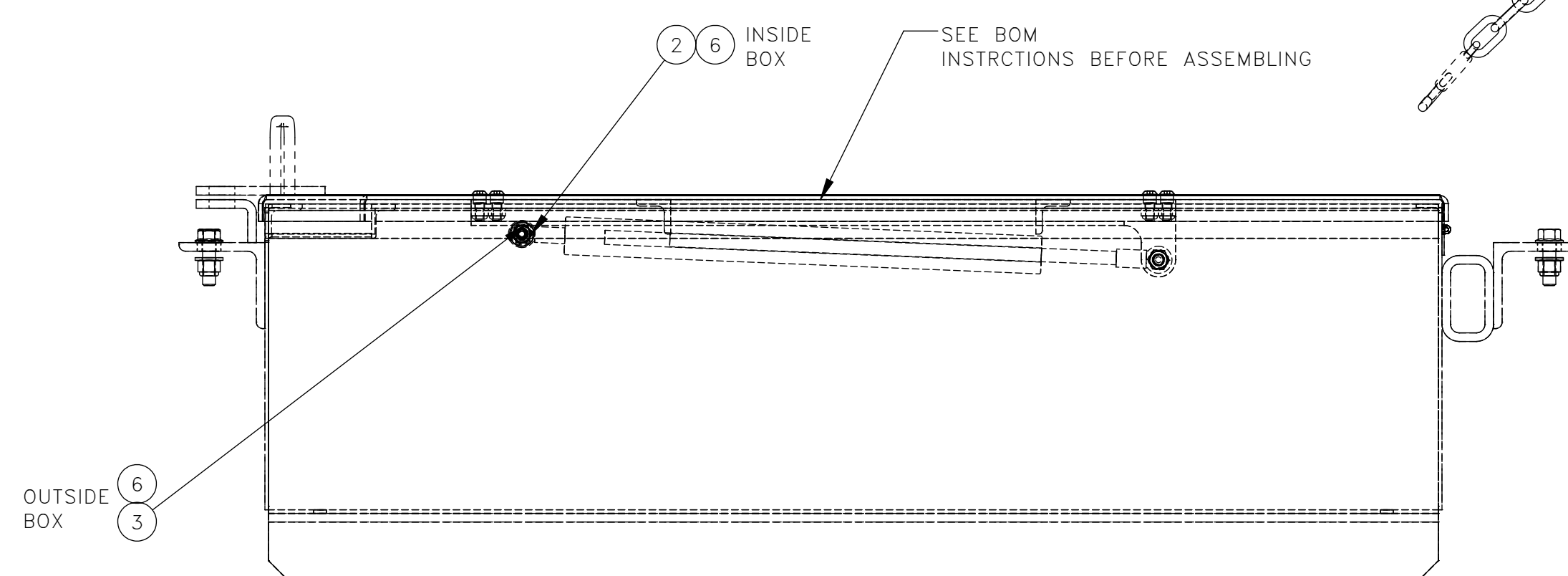
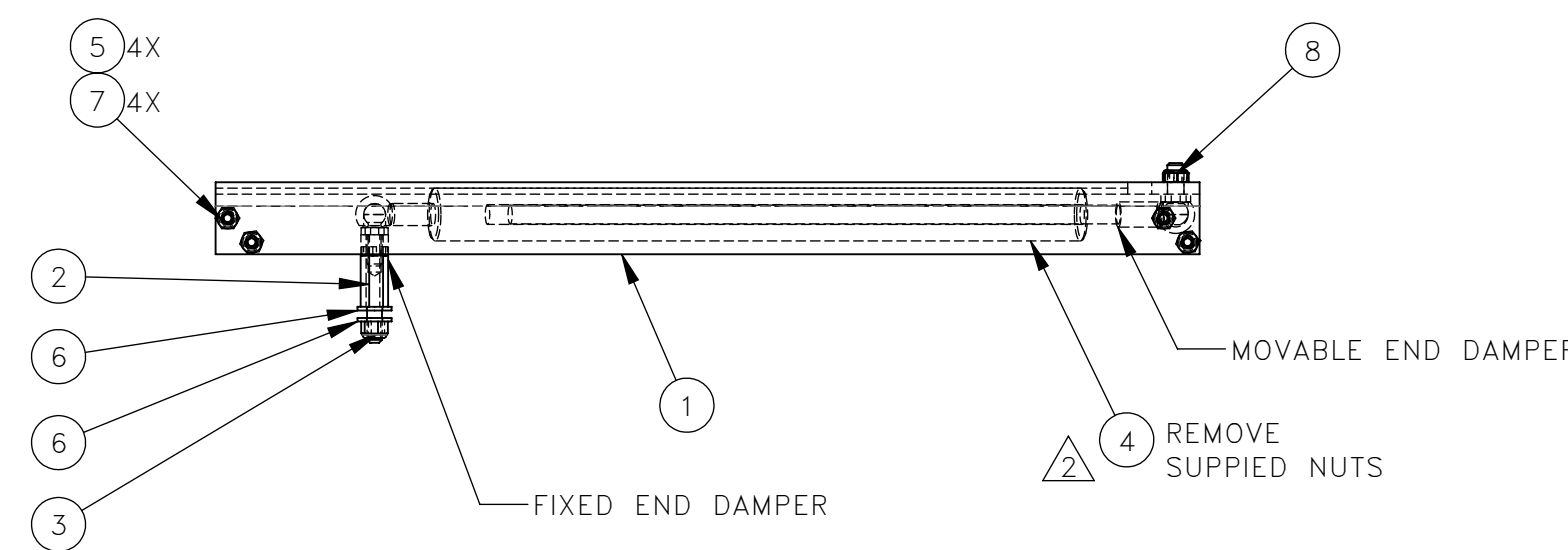
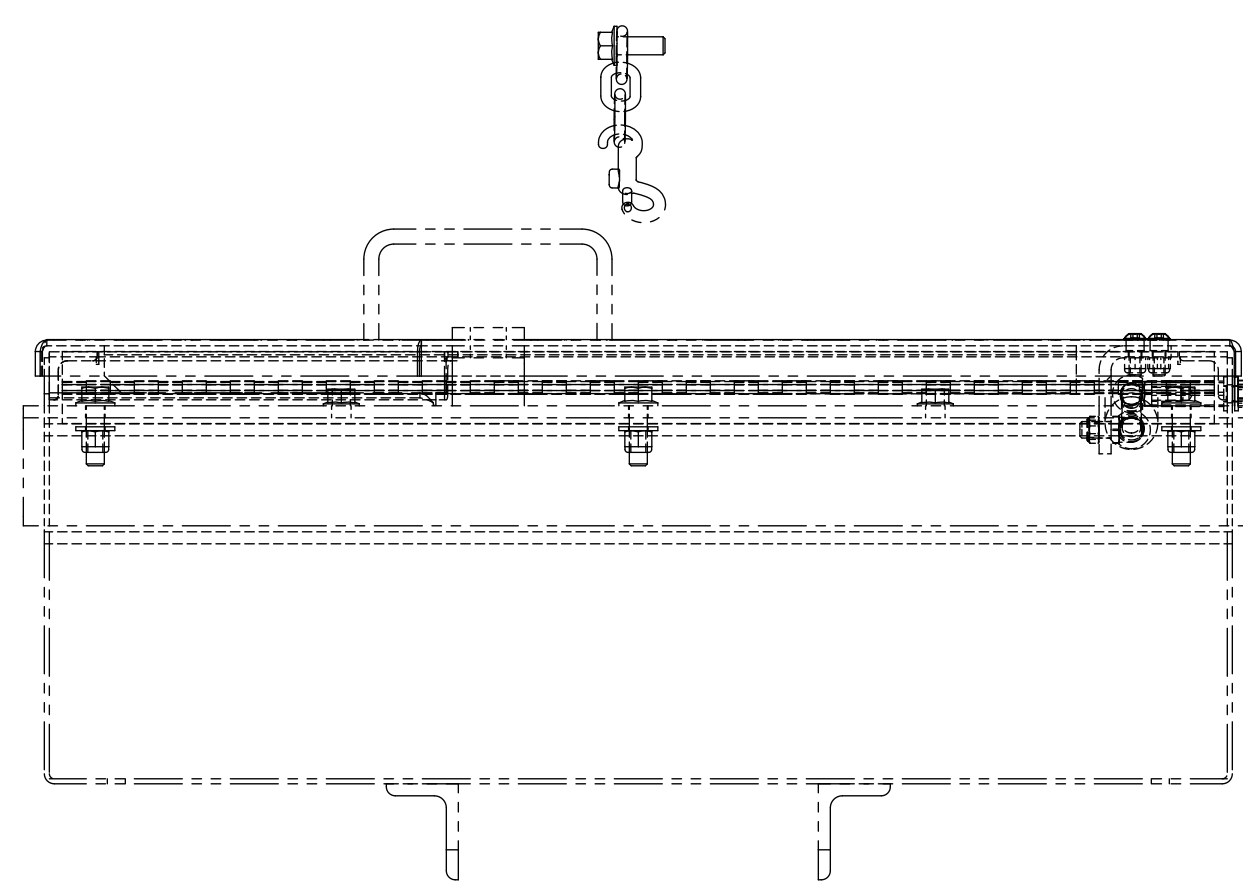
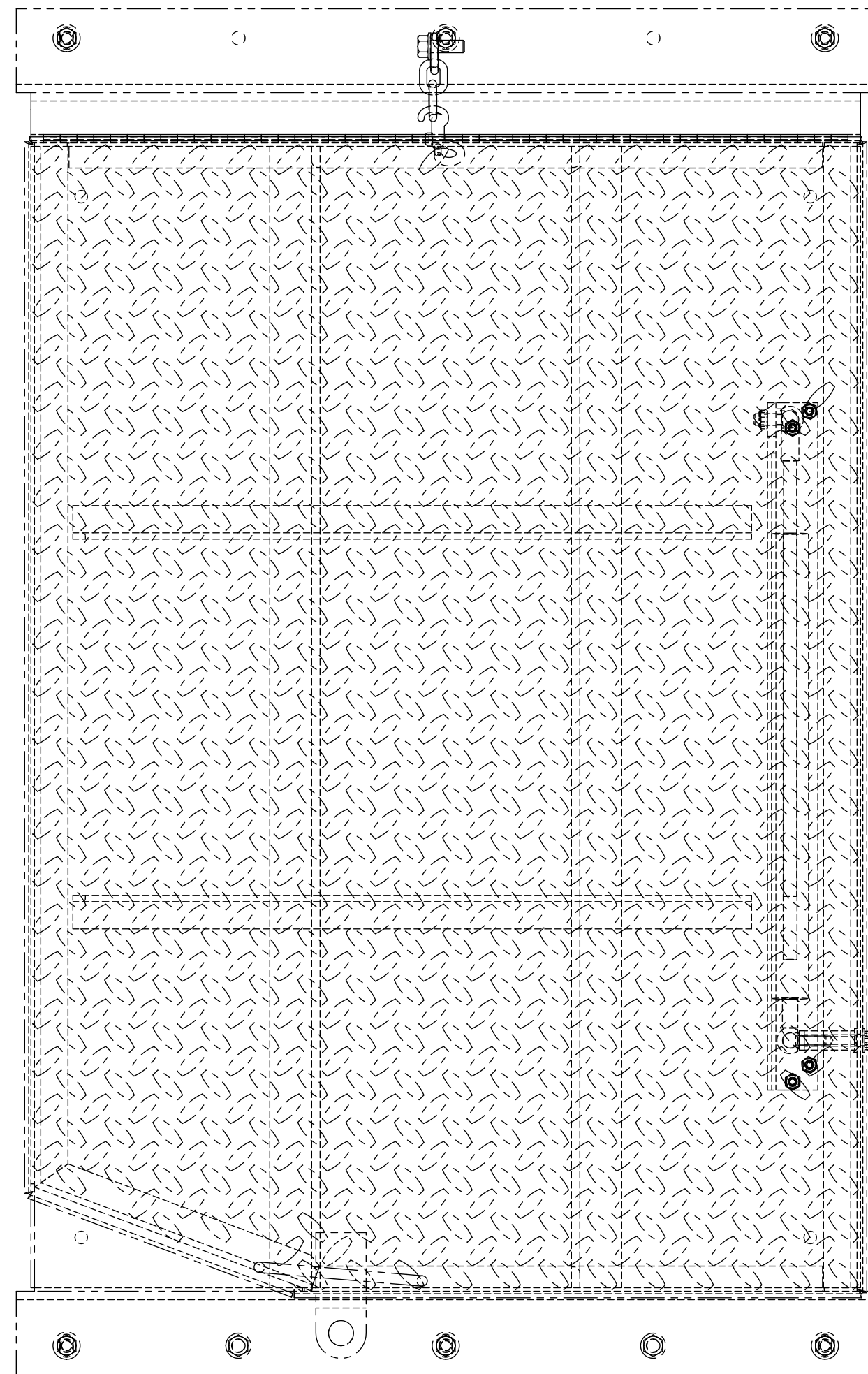
Completion / Resolution: Continue with normal machine operation after installing the RRP# 793117 Toolbox Soft Close Kit.

If you have any questions or we can be of any service, please contact the Racine Railroad Products Service Department at (262)-637-9681 or fieldservice@racinerailroad.com.

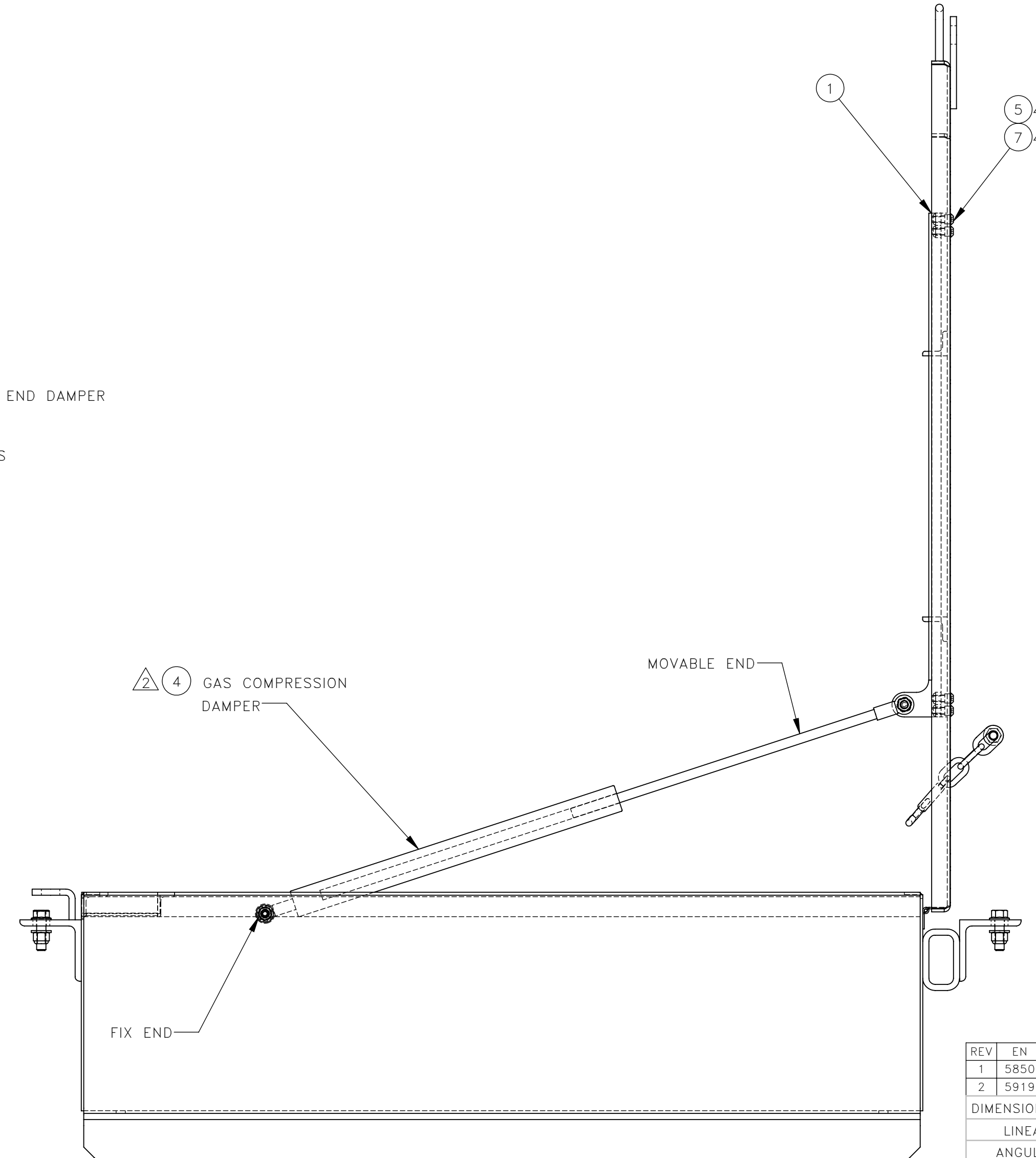
NO.	QTY	DESCRIPTION	PART NO.
1	1	ANGLE, MOUNT	322858
2	1	ROD, HEX .5	322861
3	1	NUT, HEX ES: .31-18	450578
4	1	DAMPER, COMPRESSION	476084
5	4	NUT, HEX ES: .25-20	491232
6	2	WASHER, FLT: .31	491259
7	4	SCR, SOC BUT: .25-20 X .75	491451
8	1	NUT, HEX ES: M8-1.25	501080
9	1	INSTRUCTIONS, TOOLBOX SOFT CLOSE KIT	800356

DWG NO 793117

FRONT OF MACHINE



SIDE VIEW CLOSE LID



SIDE VIEW OPEN LID

REV	EN	DESCRIPTION	DATE	DRN
1	5850	NEW RELEASE	08-21	PR
2	5919	SEE EN FOR DETAILS	9-21	PR

DIMENSION TOLERANCES UNLESS OTHERWISE SPECIFIED

LINEAR	.XX=±.03	.XXX=±.010
ANGULAR	X'=±1'	X.X'=±.5'

SURFACE FINISH 125/√ SMOOTH ALL SHARP EDGES NOT TO EXCEED CLEAN ALL WELDS

THIS PRINT AND ALL INFORMATION WITHIN BELONGS TO RACINE RAILROAD PRODUCTS

RACINE RAILROAD PRODUCTS
RACINE, WISCONSIN USA

DESCRIPTION
KIT, TOOLBOX SOFT CLOSE

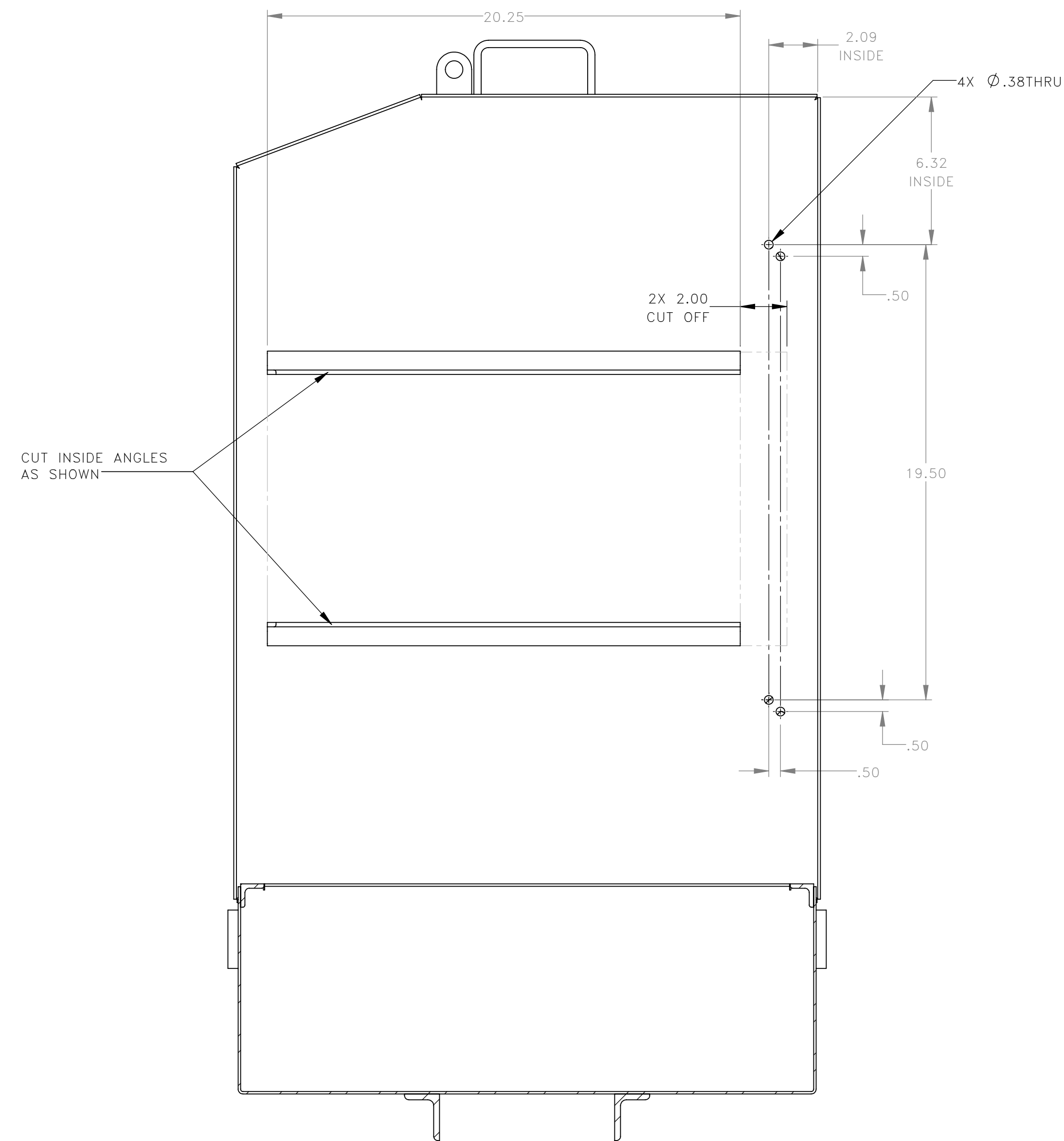
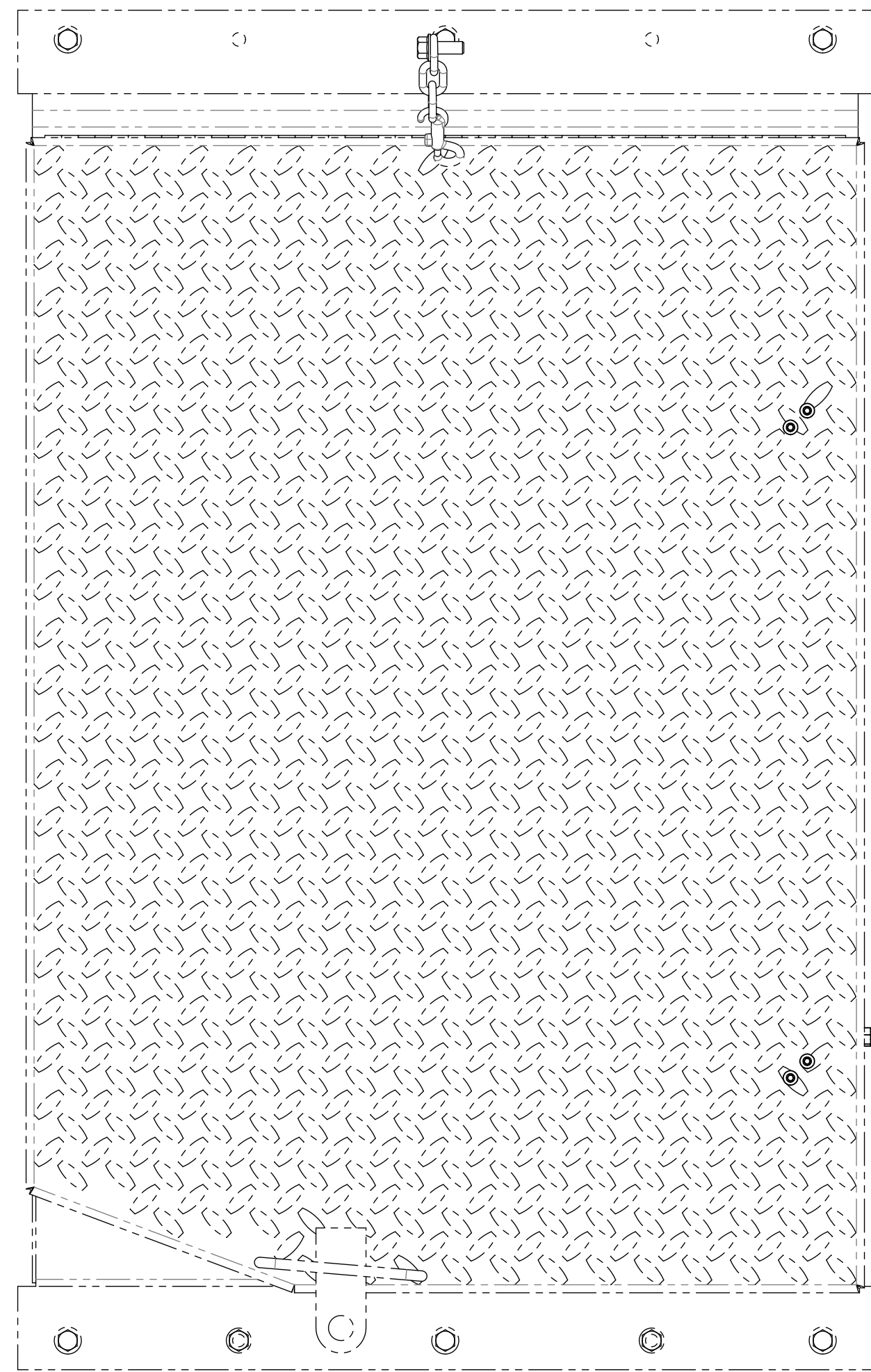
MATERIAL
SEE BOM

USED ON	719127	SCALE	DATE
		1:4	08-12-21

DRN	CHK	APP	JOB NO	SHEET
PR			RD190005	1 OF 1

DWG SIZE	CATALOG	DWG NO
D	K	793117

NO.	QTY	DESCRIPTION	PART NO.
1	REF	ANGLE, MOUNT	322858
2	REF	ROD, HEX .5	322861
3	REF	NUT, HEX ES: .31-18	450578
4	REF	DAMPER, COMPRESSION	476084
5	REF	NUT, HEX ES: .25-20	491232
6	REF	WASHER, FLT: .31	491259
7	REF	SCR, SOC BUT: .25-20 X .75	491451
8	REF	NUT, HEX ES: M8-1.25	501080



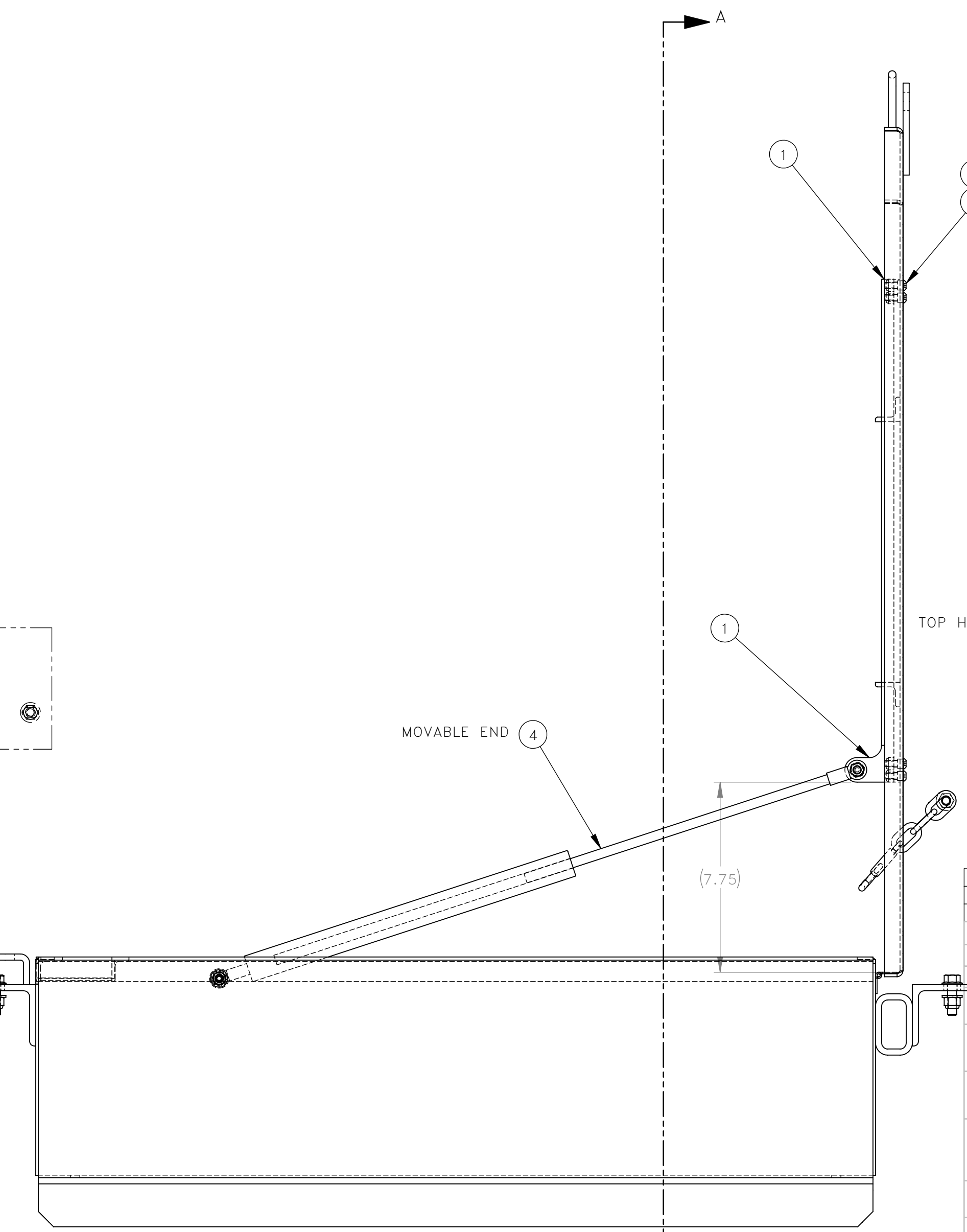
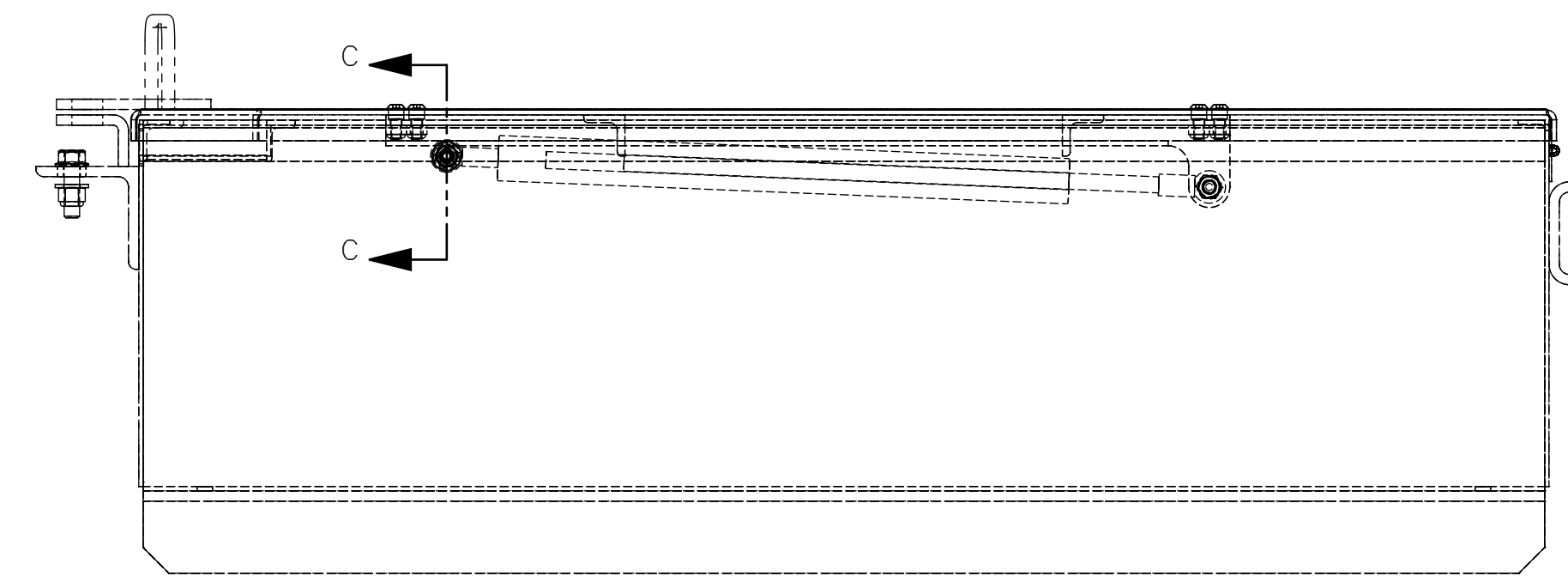
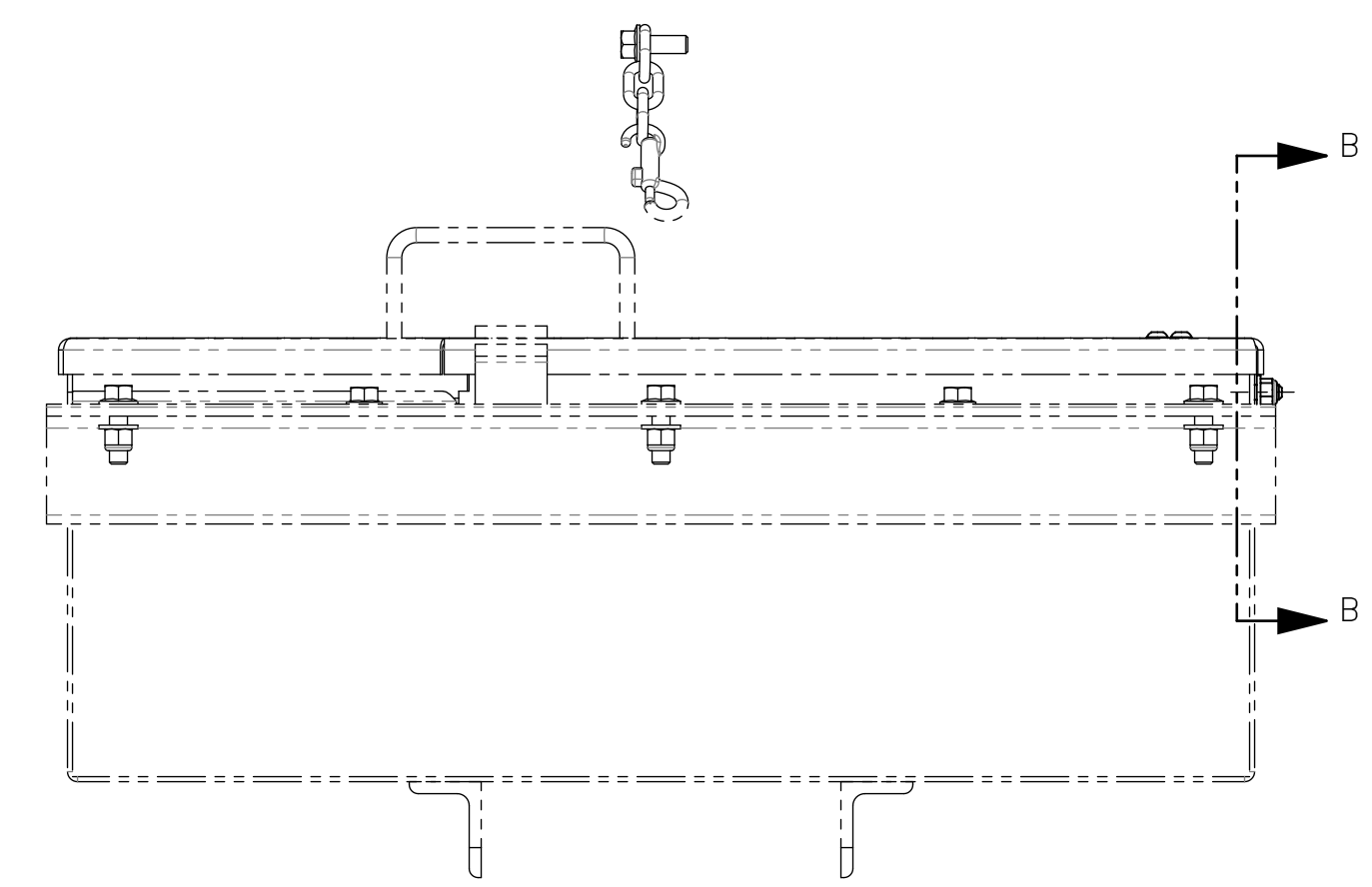
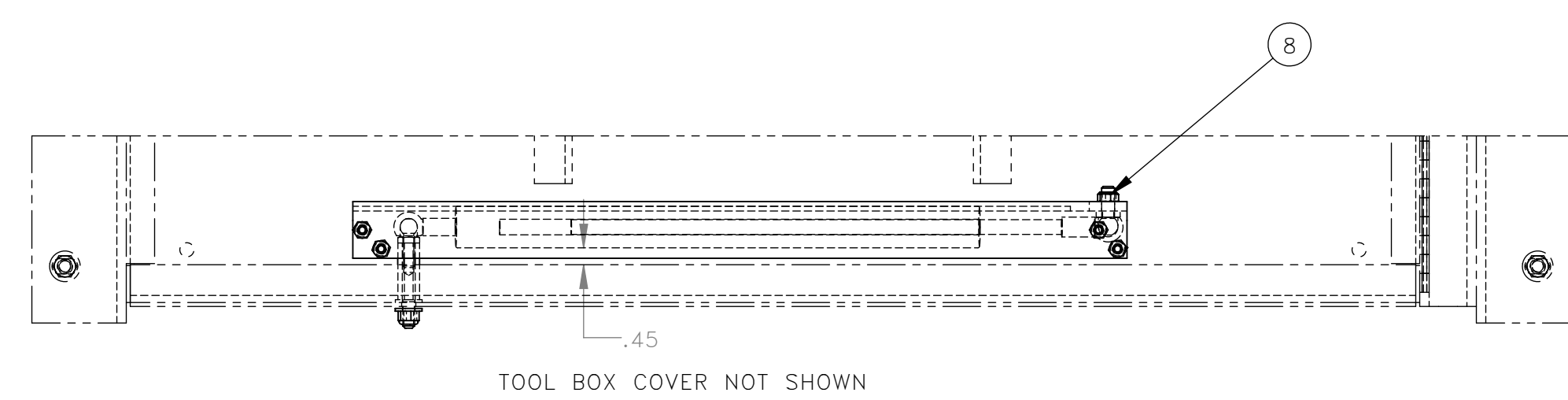
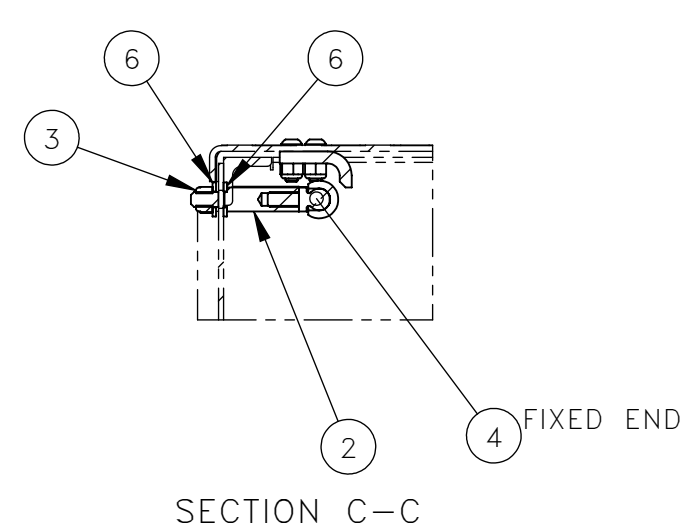
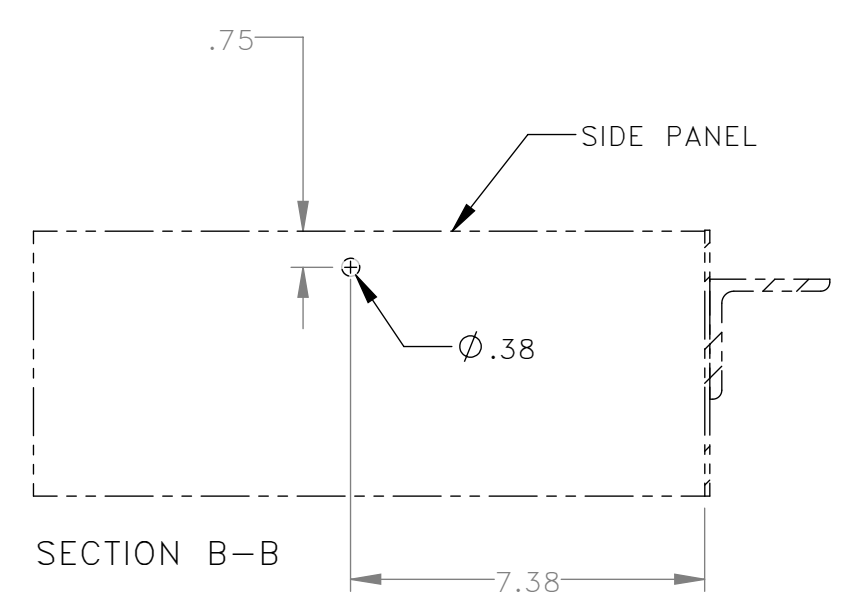
THESE INSTRUCTIONS ARE FOR KIT 793177

REMOVAL: (SHEET 1)

1. EMPTY TOOL BOX
2. CUT INSIDE ANGLES TO THE LENGTH SHOWN (SEE SECTION A-A)

INSTALLATION: (SHEET 2)

1. DRILL 4 HOLES .38 DIA IN TOP COVER (SEE SECTION A-A)
2. DRILL HOLE .38 DIA IN SIDE OF BOX (SEE SECTION B-B)
3. ATTACH ITEM 1 TO INSIDE COVER (SEE BACKSIDE VIEW OPEN LID)
4. INSTALL ITEM 2 TO ITEM 4 TO FIXED END OF ITEM 4 DAMPER (SEE SECTION C-C)
5. INSTALL STEP FOUR INTO HOLE ON SIDE OF TOOL BOX (SEE SECTION C-C)
6. ATTACH ITEM 4 DAMPER MOVABLE END TO INSIDE COVER BRACKET (SEE BACKSIDE VIEW OPEN LID)



REV	EN	DESCRIPTION	DATE	DRN
1	5850	NEW RELEASE	08-21	PR
2	5919	SEE EN FOR DETAILS	9-21	PR

DIMENSION TOLERANCES UNLESS OTHERWISE SPECIFIED

LINEAR	.XX=±.03	.XXX=±.010
ANGULAR	X' = ±1'	X.X' = ±.5'

SURFACE FINISH NOT TO EXCEED 125/√ SMOOTH ALL SHARP EDGES CLEAN ALL WELDS

THIS PRINT AND ALL INFORMATION WITHIN BELONGS TO RACINE RAILROAD PRODUCTS

RACINE RAILROAD PRODUCTS
RACINE, WISCONSIN USA

DESCRIPTION
INSTRUCTIONS, TOOLBOX SOFT CLOSE KIT

MATERIAL
SEE BOM

USED ON	793117	SCALE	DATE
		1:4	08-12-21

DRN	CHK	APP	JOB NO	SHEET
PR			RD190005	1 OF 1

DWG SIZE	CATALOG	DWG NO
D	N	800356