

Service Bulletin

Maintenance of Way Equipment

Date: 04/04/2022

RRP Service Bulletin No: RRP SB376

Title: Fuel Level Sensor Verification

Rating:



ALERT
 (Potential Problem)



INFORMATION
 (Action Is Optional)



DIRECTIVE
 (Action Is Required)



PRODUCT IMPROVEMENT
 (Enhance Product)

Product Series: Advanced Tie Plate Inserters [ATPI]

Serial No:

ATPI-014	932574	BNSF	X3800191
ATPI-015	932574	BNSF	X3800192
ATPI-016	932574	BNSF	X3800193
ATPI-017	932574	BNSF	X3800194

APTI-045	932587	BNSF	X3800196
APTI-046	932587	BNSF	X3800197
APTI-047	932587	BNSF	X3800198
APTI-048	932587	BNSF	X3800199
APTI-049	932587	BNSF	X3800200
APTI-050	932587	BNSF	X3800195

ATPI-008	933574	CP	5014-19
ATPI-036	933588	CP	5014-21
APTI-037	933588	CP	5014-22

ATPI-038	933588	CP	5014-23
APTI-032	933588	CP	7014-14
ATPI-035	933588	CP	5014--20

ATPI-009	935574	CN	438-61
ATPI-010	935574	CN	438-62
ATPI-030	935588	CN-W	CN43867
ATPI-031	935588	CN-W	CN43868
APTI-042	935588	CN	CN43869
ATPI-043	935588	CN	CN43870
APTI-051	945588	CN-S	438-71
APTI-052	945588	CN-S	438-72

ATPI-034	932587	RELAM
ATPI-041	932587	RELAM
APTI-044	932587	RELAM

ATPI-002-17	915574	UPRR	RLPI-1701
ATPI-003-17	915574	UPRR	RLPI-1702
ATPI-004-17	915574	UPRR	RLPI-1703
ATPI-005-17	915574	UPRR	RLPI-1704

ATPI-011	915574	UPRR	RLPI-1801
ATPI-012	915574	UPRR	RLPI-1802
ATPI-013	915574	UPRR	RLPI-1803

ATPI-006-17	915574	UPRR	RLPI-1705
ATPI-007-17	915574	UPRR	RLPI-1706
APTI-053	931588	UPRR	
APTI-054	931588	UPRR	
APTI-055	931588	UPRR	RLPI-2103
ATPI-056	931588	UPRR	RLPII-2104

ATPI-057	931588	UPRR	RLPI-2105
ATPI-058	931588	UPRR	RLPI-2106
ATPI-059	931588	UPRR	
ATPI-060	931588	UPRR	

Summary: Verify proper fuel level sensor measurements.

Action:



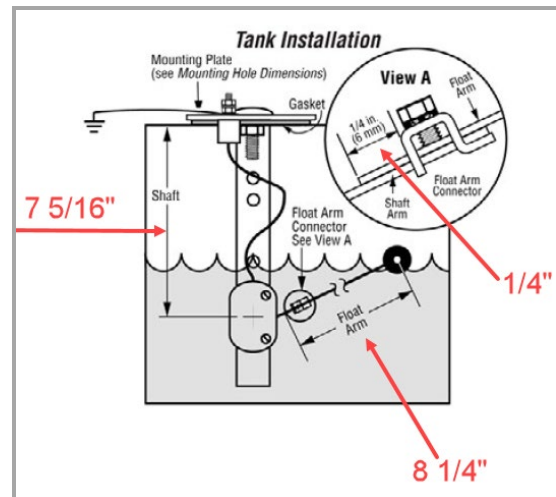
Follow all your company's lockout/tagout rules before proceeding.

1. Remove the 5 screws securing the fuel sensor unit and disconnect the wires.
Note fuel sensor orientation and wire locations before removing wires.

2. Remove fuel sensor.

Verify Measurements

3. From bottom of sensor mount to pivot point of the float, verify the distance is 7 5/16".
4. Verify measurements of float arm to be 8.25" from center of the float to end of the arm.
5. Verify the float arm is 1/4" past the edge of the hold down screw. See image for details.
6. Reinstall the sensor and reconnect the wires.



Completion / Resolution:

Continue with normal machine operation after verifying proper fuel sensor measurements.

Contact: If you have any questions or we can be of any service, please contact the Racine Railroad Products Service Department at (262)-637-9681 or fieldservice@racinerailroad.com.