

Service Bulletin

Maintenance of Way Equipment

Date: 5.17.2022

RRP Service Bulletin No: RRP SB377

Title: DAA, DAS, DCA & DASP mVEC Decal Replacement Kit

Rating:

ALERT
 (Potential Problem)

INFORMATION
 (Action Is Optional)

DIRECTIVE
 (Action Is Required)

PRODUCT IMPROVEMENT
 (Enhance Product)

Product Series: Dual Anchor Adjuster [DAA], Dual Anchor Spreader [DAS], Dual Anchor Spreader Plate [DASP]

Serial No:

Dual Anchor Adjuster [DAA]

DAA-355	931583	UPRR	AASQ-1901
DAA-356	931583	UPRR	AASQ-1902
DAA-357	931583	UPRR	AASQ-1903
DAA-358	931583	UPRR	AASQ-1904

DAA-359	933583	CP RAIL	8010-01
DAA-360	931583	UPRR	AASQ-2002
DAA-363	931583	UPRR	AASQ-2101
DAA-364	931583	UPRR	AASQ-2102

Dual Anchor Spreader [DAS]

DAS-275	931584	UPRR	AASP-1901
DAS-276	931584	UPRR	AASP-1902
DAS-282	931584	UPRR	AASP-2001

DAS-283	933584	CP RR	5013-18
DAS-297	931584	UPRR	AASP+2101
DAS-298	931584	UPRR	AASP-2102

Dual Clip Applicator [DCA]

DCA-161	931585	UPRR	ECAM-1901
DCA-162	931585	UPRR	ECAM-1902
DCA-163	931585	UPRR	ECAM-1903
DCA-164	931585	UPRR	ECAM-1904
DCA-169	931585	UPRR	ECAM-2101

Dual Anchor Spreader Plate [DASP]

DASP-280	955582	CN-E	CN64080
DASP-281	955582	CN-E	CN64081
DASP-290	955582	CN-E	CN64086
DASP-291	955582	CN-E	CN64087
DASP-278	945582	CN-S	CN64082
DASP-279	945582	CN-S	CN64083
DASP-288	955582	CN-S	CN64090
DASP-289	945582	CN-S	CN64091
DASP-292	945582	CN-S	CN64088
DASP-293	945582	CN-S	CN64089
DASP-296	945582	CN-S	CN64098

DASP-270	935582	CN-W	CN64084
DASP-277	935582	CN-W	CN64085
DASP-284	935582	CN-W	CN64094
DASP-285	935582	CN-W	CN64095
DASP-286	935582	CN-W	CN64096
DASP-287	935582	CN-W	CN64097
DASP-294	935582	CN-W	CN64092
DASP-295	935582	CN-W	CN64093

Summary: Depending on environmental conditions, the relays may overheat, and covers are removed to cool relays.

Action: Remove covers and replace mVec decals. Refer to RRP Kit # 793168 for DASP machines and RRP Kit # 793169 for DAA, DAS and DCA machines.

See attached RRP Kit # 793168 (instructions RRP# 800393) and RRP Kit # 793169 (instructions RRP# 800394).

Completion / Resolution: Continue with normal machine operation after replacing the mVec decals.

NO.	QTY	DESCRIPTION	PART NO.
1	1	DECAL, MVEC MODULE 6	473777
2	1	DECAL, MVEC MODULE 7	473778
3	1	DECAL, MVEC MODULE 5	475580
4	1	DECAL, MVEC MODULE 8	475581
5	1	PLACARD, MVEC MODULE SERVICE PARTS	476345
6	1	DECAL, GB-2 GROUND BUS BAR	476391
7	1	DECAL, GB-1 NEG./COM. BUS BAR	476392
8	1	INSTRUCTIONS, MVEC DECAL REPLACEMENT KIT	800393

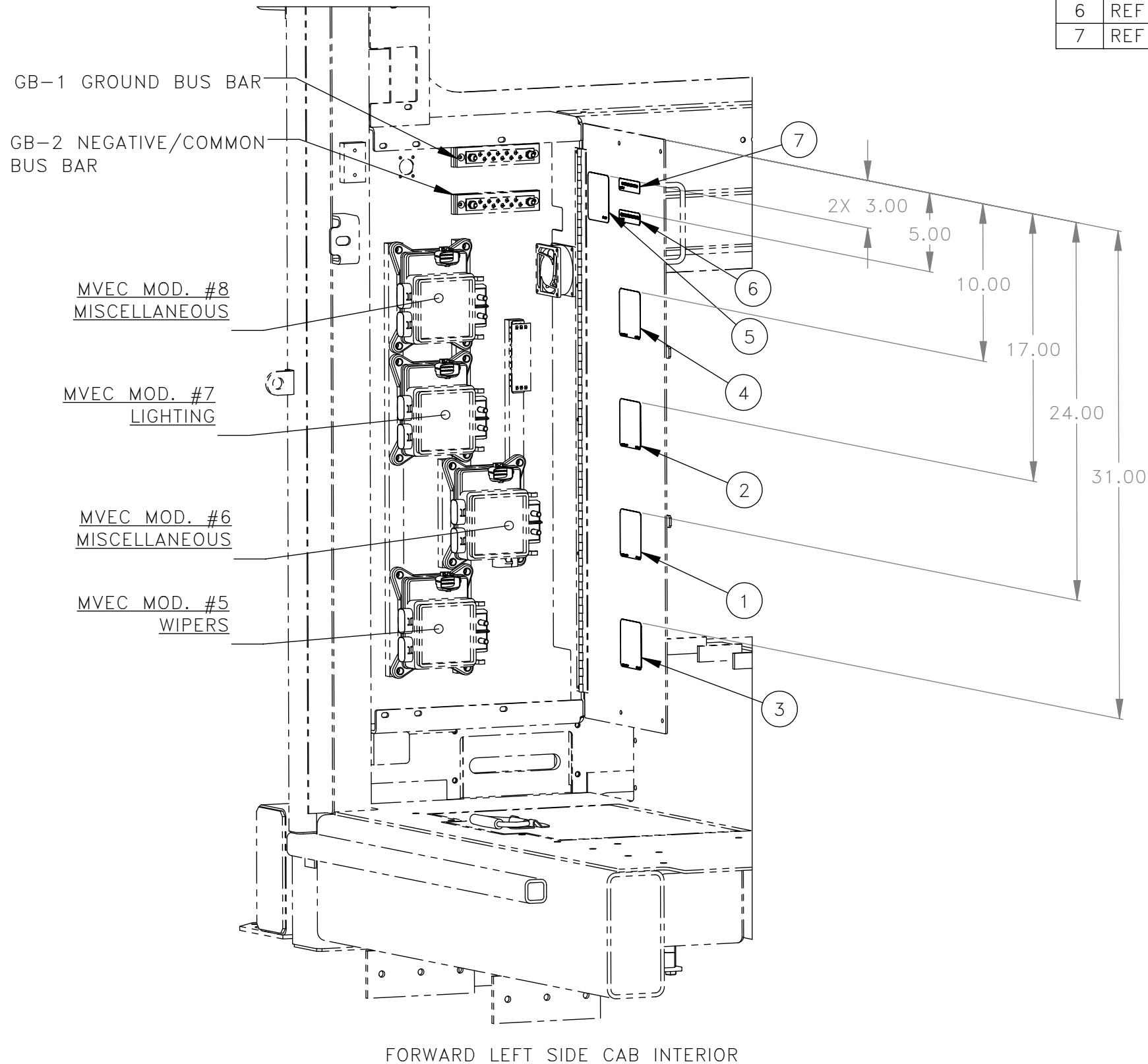
DWG NO
793168

MVEC DECAL REPLACEMENT KIT
FOR 719384 MODULES

USED ON:
935582
945582

REV	EN	DESCRIPTION	DATE	DRN
1	6238	NEW RELEASE	5-22	PR
DIMENSION TOLERANCES UNLESS OTHERWISE SPECIFIED				
LINEAR		.XX=±.03	.XXX=±.010	
ANGULAR		X°=±1°	X.X°=±.5°	
SURFACE FINISH 125/ NOT TO EXCEED			SMOOTH ALL SHARP EDGES CLEAN ALL WELDS	
THIS PRINT AND ALL INFORMATION WITHIN BELONGS TO RACINE RAILROAD PRODUCTS				
<i>RACINE RAILROAD PRODUCTS</i> RACINE, WISCONSIN USA				
DESCRIPTION KIT, MVEC DECAL REPLACEMENT				
MATERIAL SEE BOM				
USED ON SEE NOTE			SCALE 1:12	DATE 05-12-22
DRN PR	CHK	APP	JOB NO RD190005	SHEET 1 OF 1
DWG SIZE A		CATALOG K	DWG NO 793168	

NO.	QTY	DESCRIPTION	PART NO.
1	REF	DECAL, MVEC MODULE 6	473777
2	REF	DECAL, MVEC MODULE 7	473778
3	REF	DECAL, MVEC MODULE 5	475580
4	REF	DECAL, MVEC MODULE 8	475581
5	REF	PLACARD, MVEC MODULE SERVICE PARTS	476345
6	REF	DECAL, GB-2 GROUND BUS BAR	476391
7	REF	DECAL, GB-1 NEG./COM. BUS BAR	476392



THESE INSTRUCTIONS ARE FOR KIT 793168

1. REMOVE ALL MVEC COVERS & DISCARD.
2. ATTACH NEW DECALS.

REV	EN	DESCRIPTION	DATE	DRN
1	6238	NEW RELEASE	5-22	PR
DIMENSION TOLERANCES UNLESS OTHERWISE SPECIFIED				
LINEAR		.XX=±.03	.XXX=±.010	
ANGULAR		X°=±1°	X.X°=±.5°	
SURFACE FINISH		125/	SMOOTH ALL SHARP EDGES CLEAN ALL WELDS	
NOT TO EXCEED				
THIS PRINT AND ALL INFORMATION WITHIN BELONGS TO RACINE RAILROAD PRODUCTS				
RACINE RAILROAD PRODUCTS				
RACINE, WISCONSIN USA				
DESCRIPTION				
INSTRUCTIONS, MVEC DECAL REPLACEMENT KIT				
MATERIAL				
SEE BOM				
USED ON			SCALE	DATE
793168			1:8	05-12-22
DRN	CHK	APP	JOB NO	SHEET
PR			RD190005	1 OF 1
DWG SIZE		CATALOG	DWG NO	
B		A	800393	

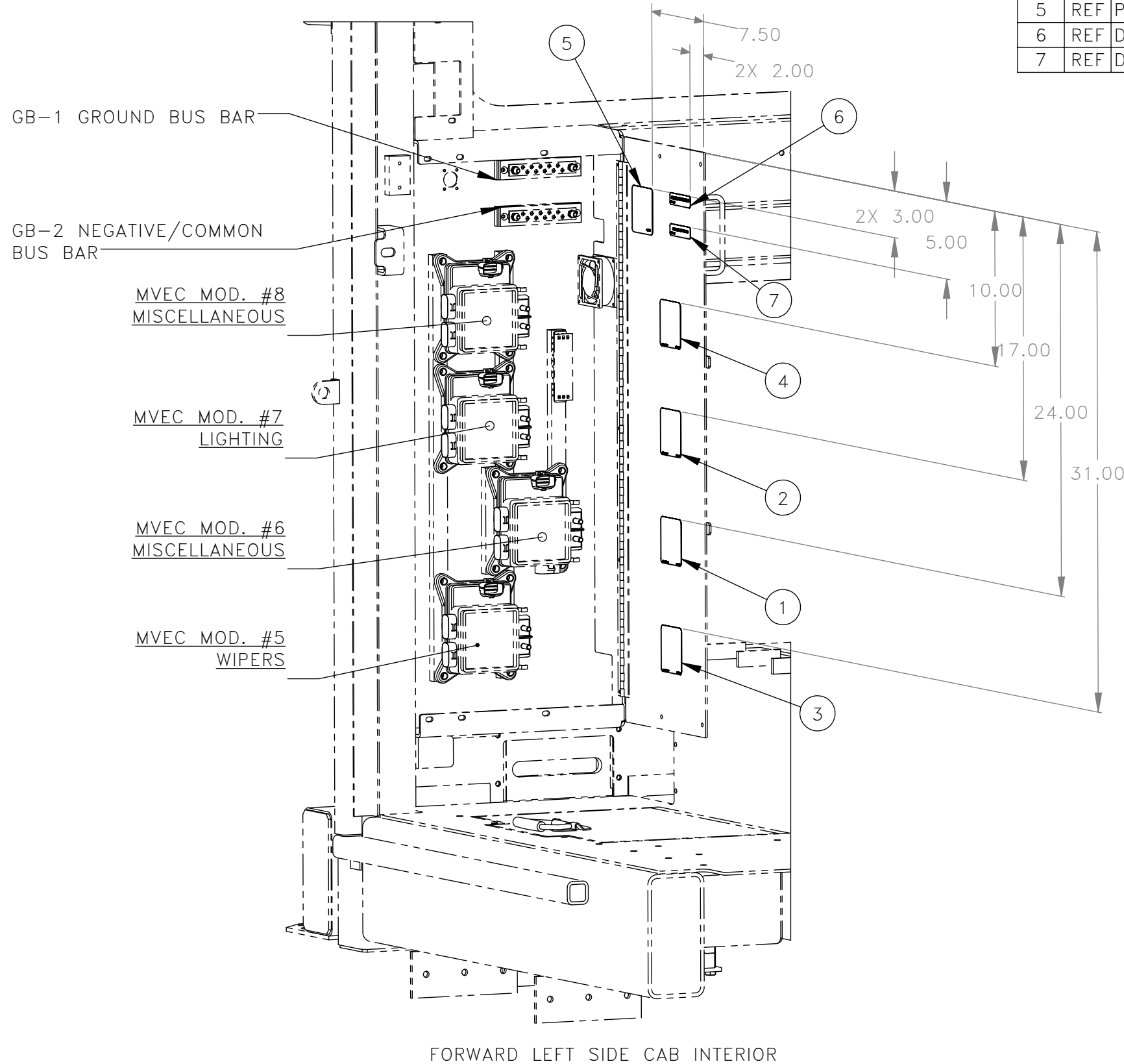
NO.	QTY	DESCRIPTION	PART NO.
1	1	DECAL, MVEC MODULE 8	475581
2	1	DECAL, MVEC MODULE 7	473778
3	1	DECAL, MVEC MODULE 6	473777
4	1	DECAL, MVEC MODULE 5	475580
5	1	PLACARD, MVEC MODULE SERVICE PARTS	476345
6	1	DECAL, GB-2 GROUND BUS BAR	476391
7	1	DECAL, GB-1 NEG./COM. BUS BAR	476392
8	1	INSTRUCTIONS, MVEC DECAL REPLACEMENT KIT	800394

DWG NO
793169

MVEC DECAL REPLACEMENT KIT
FOR 719274 MODULES

USED ON:
931583
931584
931585
933583
933584

REV	EN	DESCRIPTION	DATE	DRN
1	6238	NEW RELEASE	5-22	PR
DIMENSION TOLERANCES UNLESS OTHERWISE SPECIFIED				
LINEAR		.XX=±.03	.XXX=±.010	
ANGULAR		X°=±1°	X.X°=±.5°	
SURFACE FINISH 125/ NOT TO EXCEED			SMOOTH ALL SHARP EDGES CLEAN ALL WELDS	
THIS PRINT AND ALL INFORMATION WITHIN BELONGS TO RACINE RAILROAD PRODUCTS				
<i>RACINE RAILROAD PRODUCTS</i> RACINE, WISCONSIN USA				
DESCRIPTION KIT, MVEC DECAL REPLACEMENT				
MATERIAL SEE BOM				
USED ON SEE NOTE			SCALE 1:12	DATE 05-12-22
DRN PR	CHK	APP	JOB NO RD190005	SHEET 1 OF 1
DWG SIZE A		CATALOG K	DWG NO 793169	



FORWARD LEFT SIDE CAB INTERIOR

NO.	QTY	DESCRIPTION	PART NO.
1	REF	DECAL, MVEC MODULE 6	473777
2	REF	DECAL, MVEC MODULE 7	473778
3	REF	DECAL, MVEC MODULE 5	475580
4	REF	DECAL, MVEC MODULE 8	475581
5	REF	PLACARD, MVEC MODULE SERVICE PARTS	476345
6	REF	DECAL, GB-2 GROUND BUS BAR	476391
7	REF	DECAL, GB-1 NEG./COM. BUS BAR	476392

THESE INSTRUCTIONS ARE FOR KIT 793169

1. REMOVE ALL MVEC COVERS & DISCARD.
2. ATTACH NEW DECALS.

REV	EN	DESCRIPTION	DATE	DRN
1	6238	NEW RELEASE	5-22	PR
DIMENSION TOLERANCES UNLESS OTHERWISE SPECIFIED				
LINEAR	.XX=±.03	.XXX=±.010		
ANGULAR	X°=±1°	X.X°=±.5°		
SURFACE FINISH		125/√	SMOOTH ALL SHARP EDGES CLEAN ALL WELDS	
NOT TO EXCEED				
THIS PRINT AND ALL INFORMATION WITHIN BELONGS TO RACINE RAILROAD PRODUCTS				
RACINE RAILROAD PRODUCTS				
RACINE, WISCONSIN USA				
DESCRIPTION				
INSTRUCTIONS, MVEC DECAL REPLACEMENT KIT				
MATERIAL				
SEE BOM				
USED ON		SCALE	DATE	
793169		1:8	05-12-22	
DRN	CHK	APP	JOB NO	SHEET
PR			RD190005	1 OF 1
DWG SIZE		CATALOG	DWG NO	
B		A	800394	