

# Service Bulletin

## Maintenance of Way Equipment

**Date:** 5.17.2022

**RRP Service Bulletin No:** RRP SB378

**Title:** Advanced Tie Plate Inserter [ATPI] mVEC Decal Replacement Kit

**Rating:**



**ALERT**  
 (Potential Problem)



**INFORMATION**  
 (Action Is Optional)



**DIRECTIVE**  
 (Action Is Required)



**PRODUCT IMPROVEMENT**  
 (Enhance Product)

**Product Series:** Advanced Tie Plate Inserter [ATPI]

**Serial No:**

**BNSF ATPI's**

ATPI-014	932574	BNSF	X3800191
ATPI-015	932574	BNSF	X3800192
ATPI-016	932574	BNSF	X3800193
ATPI-017	932574	BNSF	X3800194

APTI-045	932587	BNSF	X3800196
APTI-046	932587	BNSF	X3800197
APTI-047	932587	BNSF	X3800198
APTI-048	932587	BNSF	X3800199
APTI-049	932587	BNSF	X3800200
APTI-050	932587	BNSF	X3800195

**CN ATPI's**

ATPI-009	935574	CN	438-61
ATPI-010	935574	CN	438-62
ATPI-019	935588	CN-W	CN43865
ATPI-020	935588	CN-W	CN43866
ATPI-021	945588	CN-S	CN43863
ATPI-022	945588	CN-S	CN43864

ATPI-030	935588	CN-W	CN43867
ATPI-031	935588	CN-W	CN43868
APTI-042	935588	CN	CN43869
ATPI-043	935588	CN	CN43870
APTI-051	945588	CN-S	438-71
APTI-052	945588	CN-S	438-72

**CP ATPI's**

ATPI-008	933574	CP	5014-19
ATPI-027/036	933588	CP	5014-21
APTI-028/037	933588	CP	5014-22

ATPI-029/038	933588	CP	5014-23
APTI-032	933588	CP	7014-14
ATPI-033/035	933588	CP	5014--20

**RELAM ATPI's**

ATPI-034	932587	RELAM
ATPI-041	932587	RELAM
APTI-044	932587	RELAM

**UPRR ATPI's**

ATPI-023	931588	UPRR	RLPI-1901
ATPI-024	931588	UPRR	RLPI-1902
ATPI-025	931588	UPRR	RLPI-1903
ATPI-026	931588	UPRR	RLPI-1904
APTI-053	931588	UPRR	
APTI-054	931588	UPRR	

APTI-055	931588	UPRR	RLPI-2103
ATPI-056	931588	UPRR	RLPII-2104
ATPI-057	931588	UPRR	RLPI-2105
ATPI-058	931588	UPRR	RLPI-2106
ATPI-059	931588	UPRR	
ATPI-060	931588	UPRR	

**Summary:** Depending on environmental conditions, the relays may overheat, and covers are removed to cool relays.

**Action:** Remove covers and replace mVec decals.

Refer to RRP Kit # 793166 for 9xx587 & 9xx574 machines and RRP Kit # 793167 for 9xx588 machines.

See attached RRP Kit # 793166 (instructions RRP# 800391) and RRP Kit # 793167 (instructions RRP# 800392)

**Completion / Resolution:** Continue with normal machine operation after replacing the mVec decals.

If you have any questions or we can be of any service, please contact the Racine Railroad Products Service Department at (262)-637-9681 or [fieldservice@racinerailroad.com](mailto:fieldservice@racinerailroad.com).

NO.	QTY	DESCRIPTION	PART NO.
1	1	DECAL, MVEC MODULE 4	475806
2	1	DECAL, MVEC MODULE 5	475807
3	1	DECAL, MVEC MODULE 6	475808
4	1	DECAL, MVEC MODULE 7	475809
5	1	PLACARD, MVEC MODULE SERVICE PARTS	476345
6	1	DECAL, GB-2 GROUND BUS BAR	476391
7	1	DECAL, GB-1 NEG./COM. BUS BAR	476392
8	1	INSTRUCTIONS, MVEC DECAL REPLACEMENT KIT	800391

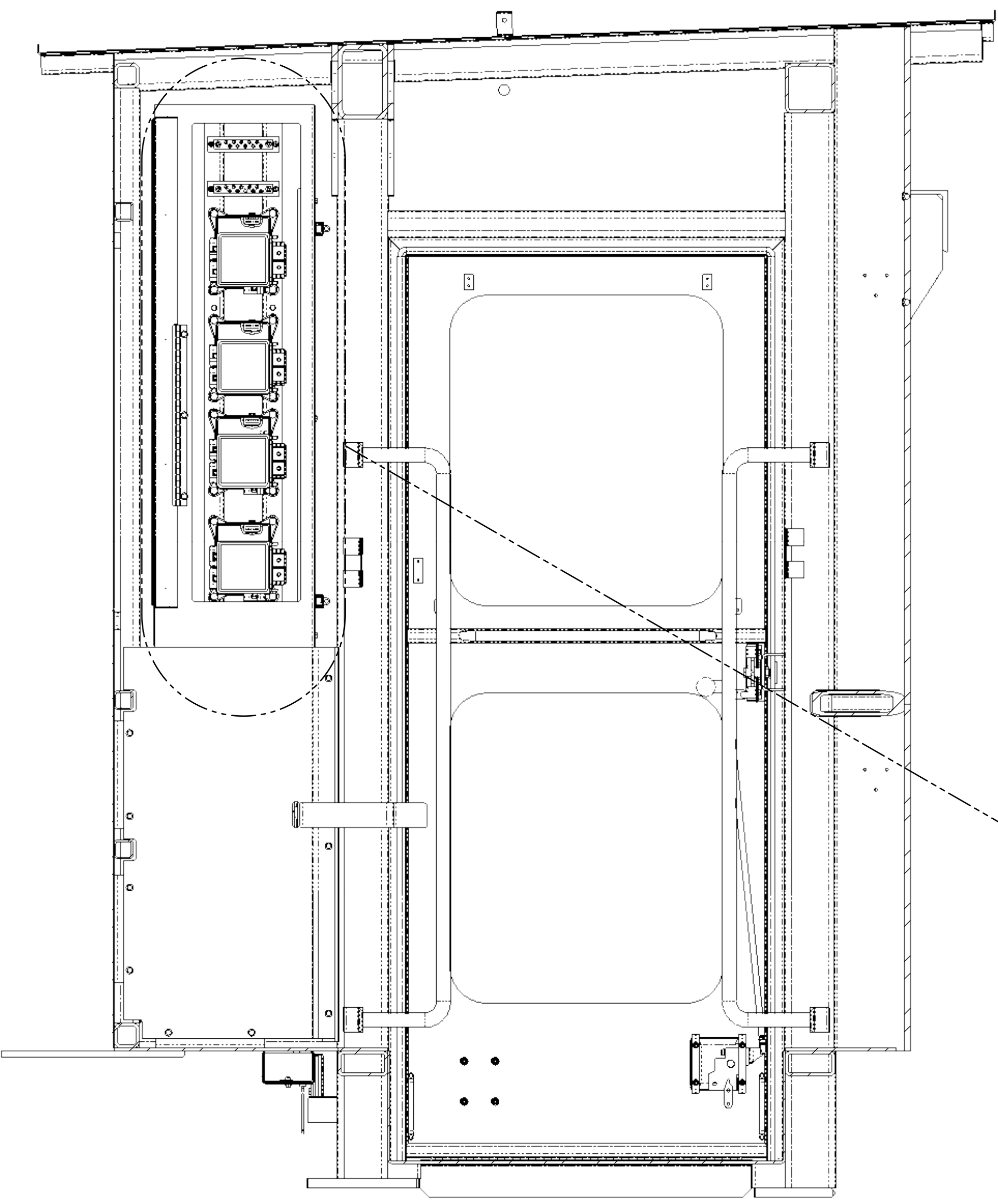
DWG NO  
**793166**

MVEC DECAL REPLACEMENT KIT  
FOR 718732 MODULES

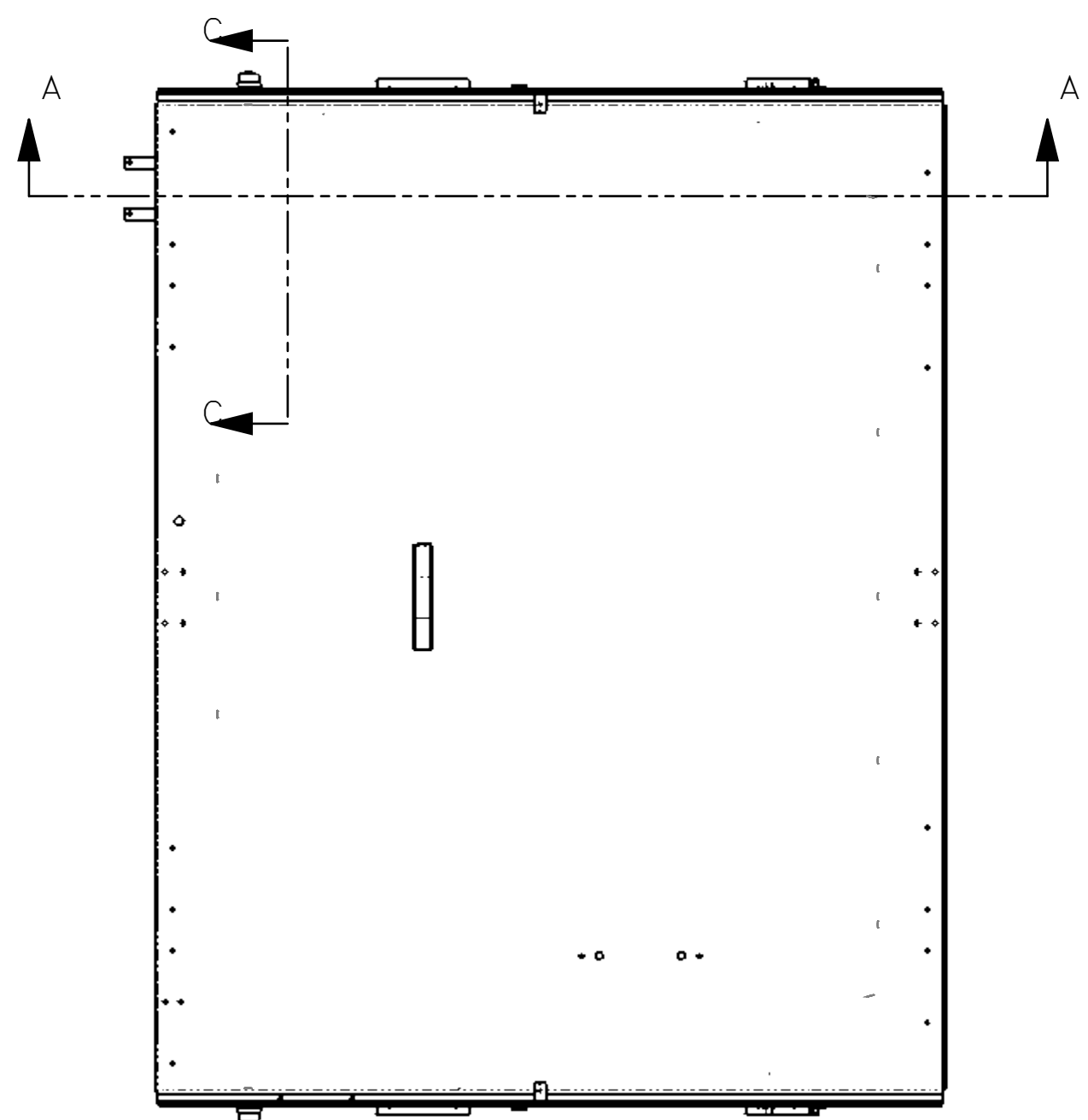
USED ON:  
930587  
932587  
932574

REV	EN	DESCRIPTION	DATE	DRN
1	6238	NEW RELEASE	5-22	PR
DIMENSION TOLERANCES UNLESS OTHERWISE SPECIFIED				
LINEAR		.XX=±.03	.XXX=±.010	
ANGULAR		X°=±1°	X.X°=±.5°	
SURFACE FINISH 125/NOT TO EXCEED			SMOOTH ALL SHARP EDGES CLEAN ALL WELDS	
THIS PRINT AND ALL INFORMATION WITHIN BELONGS TO RACINE RAILROAD PRODUCTS				
<b><i>RACINE RAILROAD PRODUCTS</i></b>				
RACINE, WISCONSIN USA				
DESCRIPTION				
KIT, MVEC DECAL REPLACEMENT				
MATERIAL				
SEE BOM				
USED ON			SCALE	DATE
SEE NOTE			1:8	05-11-22
DRN	CHK	APP	JOB NO	SHEET
PR			RD150003	1 OF 1
DWG SIZE		CATALOG	DWG NO	
<b>A</b>		<b>K</b>	<b>793166</b>	

NO.	QTY	DESCRIPTION	PART NO.
1	REF	DECAL, MVEC MODULE 4	475806
2	REF	DECAL, MVEC MODULE 5	475807
3	REF	DECAL, MVEC MODULE 6	475808
4	REF	DECAL, MVEC MODULE 7	475809
5	REF	PLACARD, MVEC MODULE SERVICE PARTS	476345
6	REF	DECAL, GB-2 GROUND BUS BAR	476391
7	REF	DECAL, GB-1 NEG./COM. BUS BAR	476392

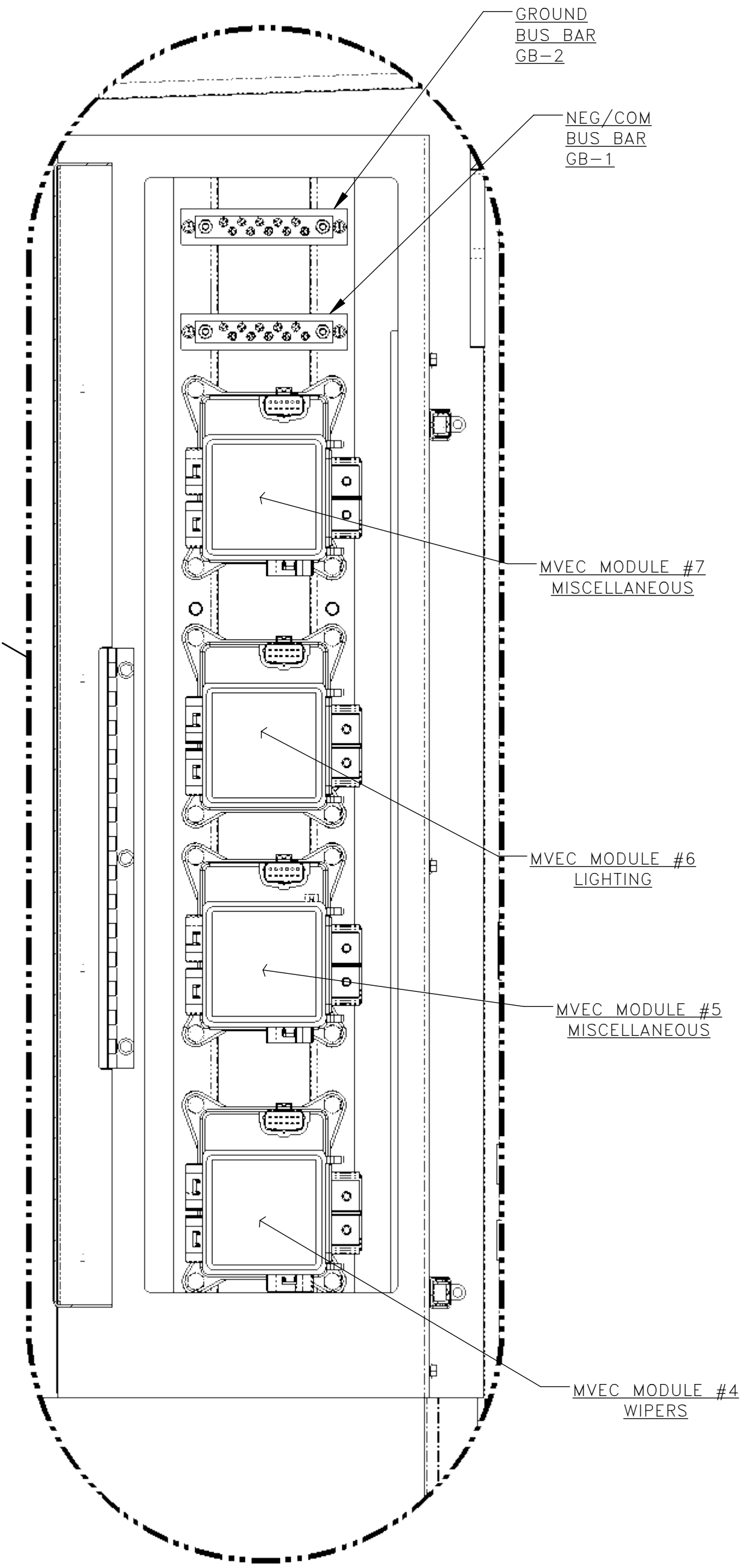


SECTION A-A

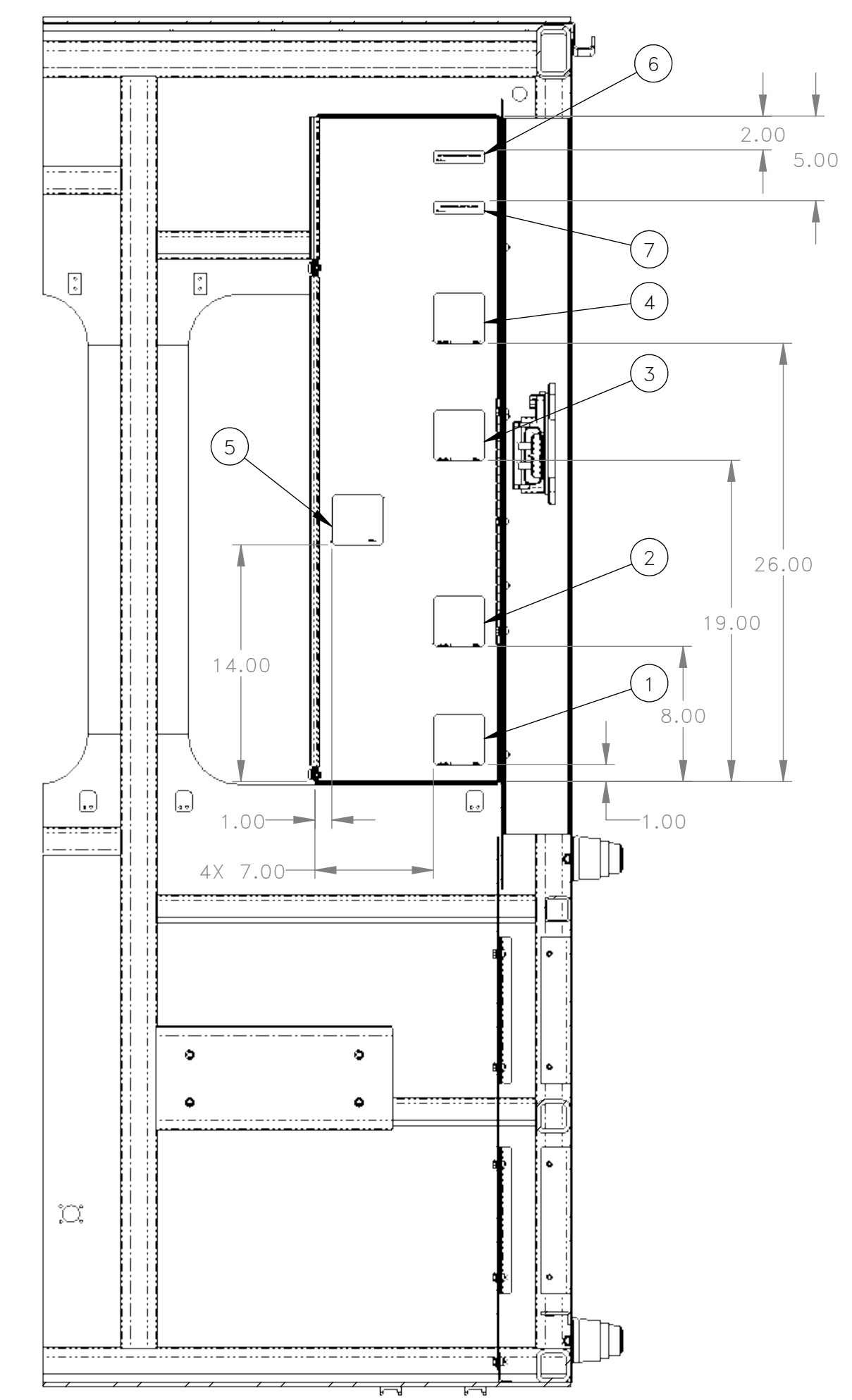


TOP VIEW CAB

THESE INSTRUCTIONS ARE FOR KIT 793166  
 1. REMOVE ALL MVEC COVERS & DISCARD. (SEE DETAIL B).  
 2. ATTACH NEW DECALS (SEE SECTION C-C).



DETAIL B  
 MVEC DOOR OPENED  
 SCALE 1 : 4



SECTION C-C  
 INTER MVEC DOOR

REV	EN	DESCRIPTION	DATE	DRN
1	6238	NEW RELEASE	5-22	PR

DIMENSION TOLERANCES UNLESS OTHERWISE SPECIFIED

LINEAR	.XX=±.03	.XXX=±.010
ANGULAR	X°=±1°	X.X°=±.5°

SURFACE FINISH 125/ ✓ SMOOTH ALL SHARP EDGES  
 NOT TO EXCEED CLEAN ALL WELDS

THIS PRINT AND ALL INFORMATION WITHIN BELONGS TO RACINE RAILROAD PRODUCTS

**RACINE RAILROAD PRODUCTS**  
 RACINE, WISCONSIN USA

DESCRIPTION  
 INSTRUCTIONS, MVEC DECAL REPLACEMENT KIT

MATERIAL  
 SEE BOM

USED ON	793166	SCALE	DATE
		1:8	08-14-18

DRN	CHK	APP	JOB NO	SHEET
DW			RD150003	1 OF 1

DWG SIZE	CATALOG	DWG NO
D	A	800391

NO.	QTY	DESCRIPTION	PART NO.
1	1	DECAL, MVEC MODULE 4	473218
2	1	DECAL, MVEC MODULE 5	473219
3	1	DECAL, MVEC MODULE 6	473220
4	1	DECAL, MVEC MODULE 7	473157
5	1	PLACARD, MVEC MODULE SERVICE PARTS	476345
6	1	DECAL, GB-2 GROUND BUS BAR	476391
7	1	DECAL, GB-1 NEG./COM. BUS BAR	476392
8	1	INSTRUCTIONS, MVEC DECAL REPLACEMENT KIT	800392

DWG NO  
**793167**

MVEC DECAL REPLACEMENT KIT  
FOR 719430 MODULES

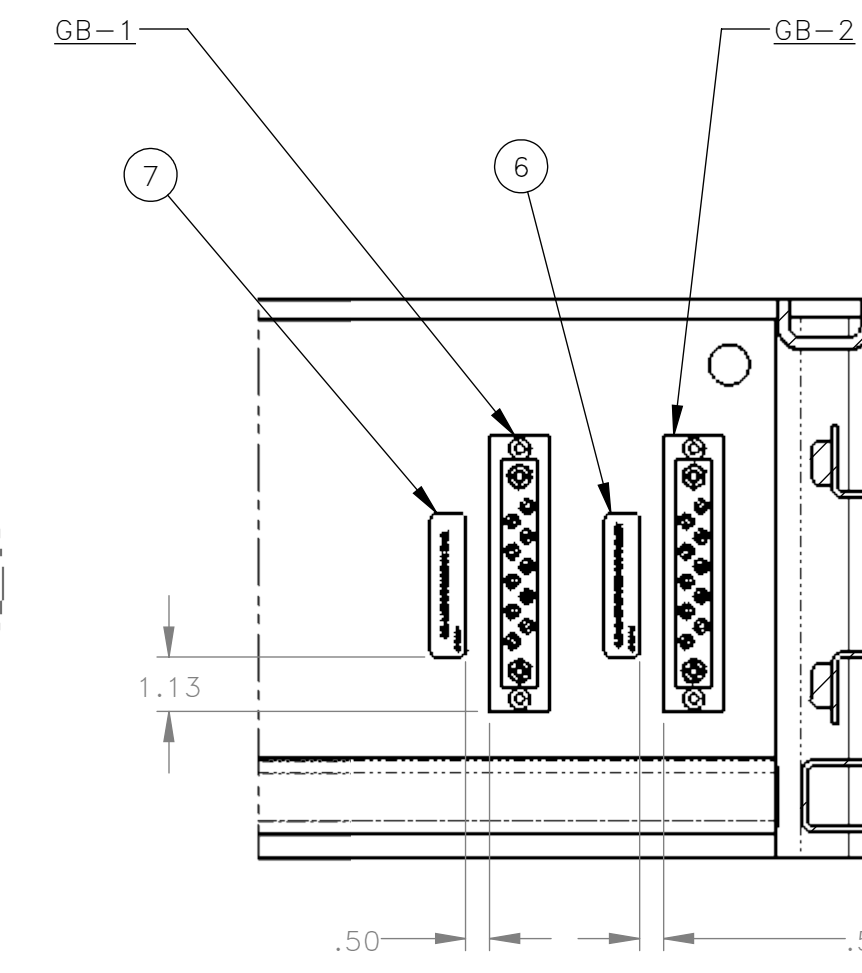
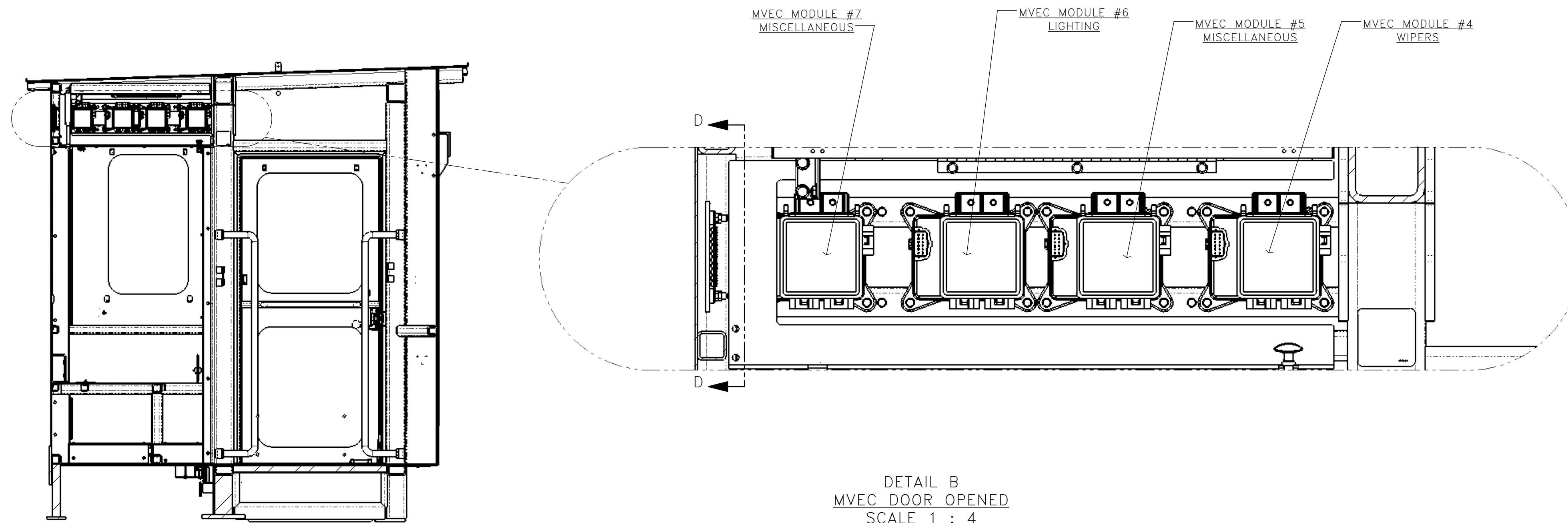
USED ON:  
931588  
935588  
945588

REV	EN	DESCRIPTION	DATE	DRN
1	6238	NEW RELEASE	5-22	PR
DIMENSION TOLERANCES UNLESS OTHERWISE SPECIFIED				
LINEAR		.XX=±.03	.XXX=±.010	
ANGULAR		X°=±1°	X.X°=±.5°	
SURFACE FINISH 125/ NOT TO EXCEED			SMOOTH ALL SHARP EDGES CLEAN ALL WELDS	
THIS PRINT AND ALL INFORMATION WITHIN BELONGS TO RACINE RAILROAD PRODUCTS				
<b><i>RACINE RAILROAD PRODUCTS</i></b> RACINE, WISCONSIN USA				
DESCRIPTION KIT, MVEC DECAL REPLACEMENT				
MATERIAL SEE BOM				
USED ON SEE NOTE			SCALE 1:12	DATE 05-12-22
DRN PR	CHK	APP	JOB NO RD150003	SHEET 1 OF 1
DWG SIZE <b>A</b>		CATALOG <b>K</b>	DWG NO <b>793167</b>	

THESE INSTRUCTIONS ARE FOR KIT 793167

1. REMOVE ALL MVEC COVERS & DISCARD. (SEE DETAIL B).
2. ATTACH NEW DECALS (SEE SECTION C-C & D-D).

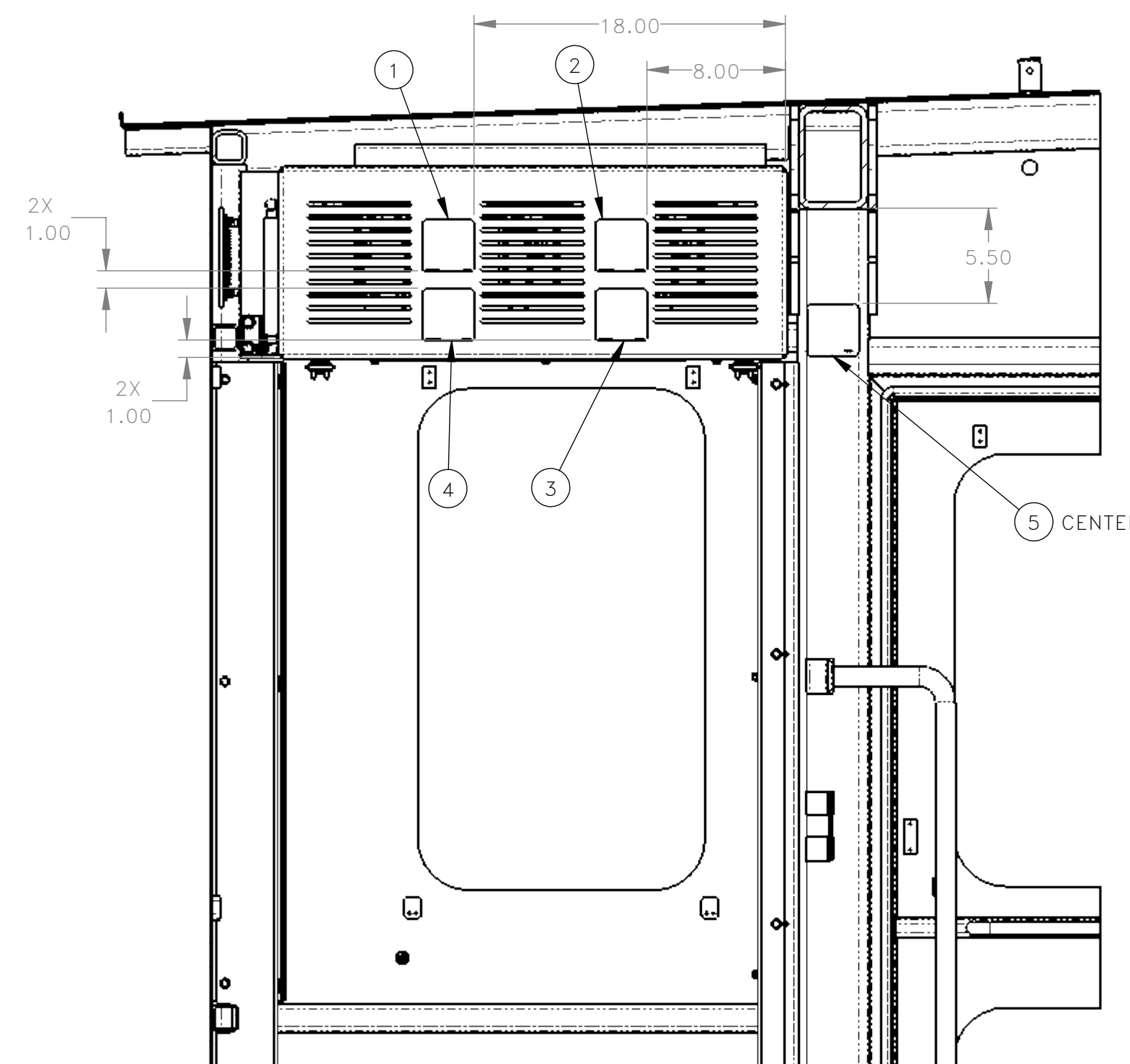
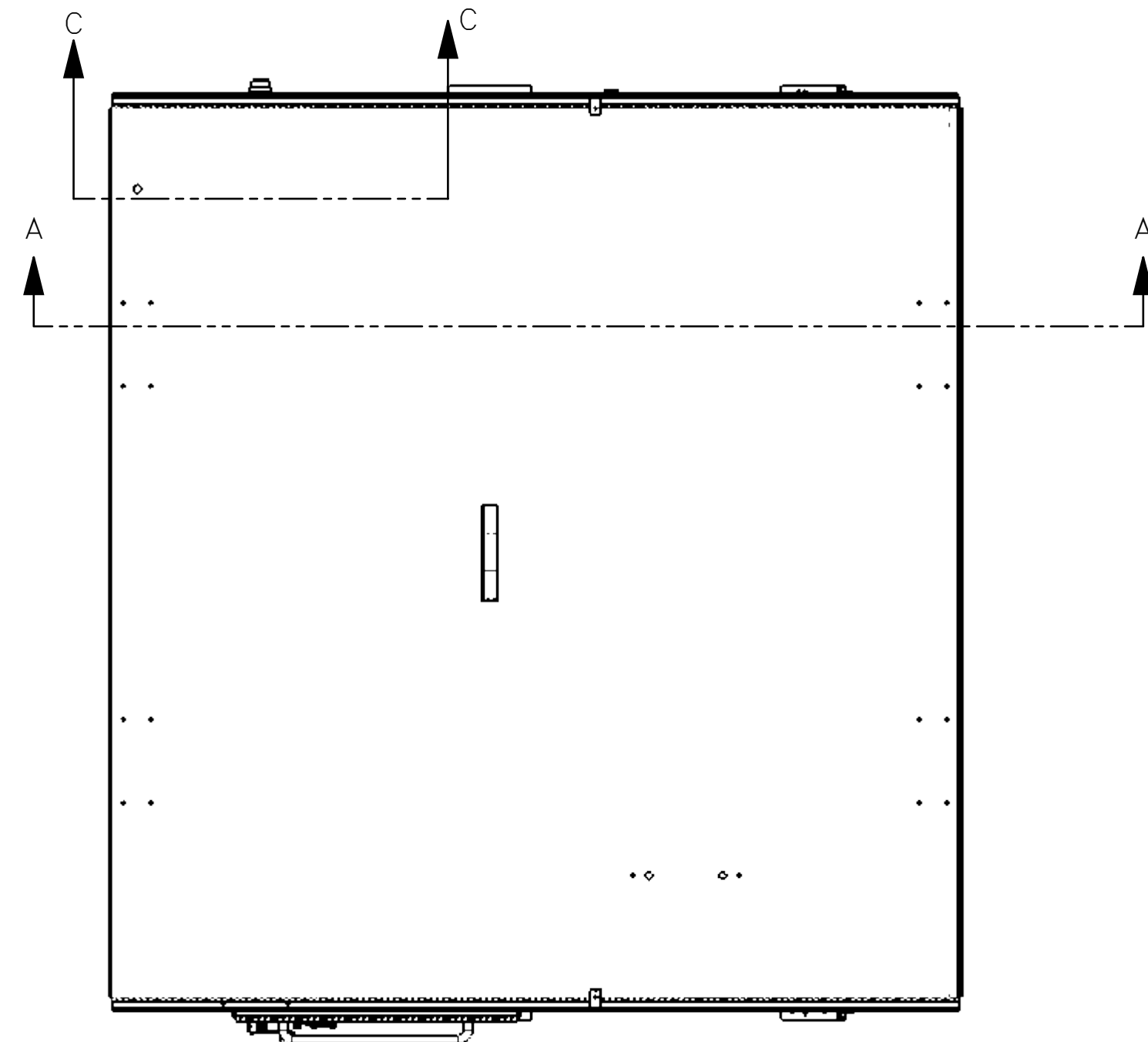
NO.	QTY	DESCRIPTION	PART NO.
1	REF	DECAL, MVEC MODULE 7	473157
2	REF	DECAL, MVEC MODULE 4	473218
3	REF	DECAL, MVEC MODULE 5	473219
4	REF	DECAL, MVEC MODULE 6	473220
5	REF	PLACARD, MVEC MODULE SERVICE PARTS	476345
6	REF	DECAL, GB-2 GROUND BUS BAR	476391
7	REF	DECAL, GB-1 NEG./COM. BUS BAR	476392



SECTION A-A  
SCALE 1 : 16

DETAIL B  
MVEC DOOR OPENED  
SCALE 1 : 4

SECTION D-D  
REAR WALL  
SCALE 1 : 4



SECTION C-C  
MVEC DOOR CLOSED  
SCALE 1 : 8

REV	EN	DESCRIPTION	DATE	DRN
1	6238	NEW RELEASE	5-22	PR

DIMENSION TOLERANCES UNLESS OTHERWISE SPECIFIED

LINEAR	.XX=±.03	.XXX=±.010
ANGULAR	X' = ±1"	X.X' = ±.5"

SURFACE FINISH NOT TO EXCEED 125 ✓ SMOOTH ALL SHARP EDGES CLEAN ALL WELDS

THIS PRINT AND ALL INFORMATION WITHIN BELONGS TO RACINE RAILROAD PRODUCTS

**RACINE RAILROAD PRODUCTS**  
RACINE, WISCONSIN USA

DESCRIPTION  
INSTRUCTIONS, MVEC DECAL REPLACEMENT KIT

MATERIAL  
SEE BOM

USED ON	793167	SCALE	DATE
		1:3	05-12-22

DRN	CHK	APP	JOB NO	SHEET
PR			RD190005	1 OF 1

DWG SIZE	CATALOG	DWG NO
D	A	800392