

Service Bulletin

Maintenance of Way Equipment

Date: 5.24.2022**RRP Service Bulletin No:** RRP SB380**Title:** Retrofit existing 3G modem machines with 4G modems**Rating:****ALERT**

(Potential Problem)

**INFORMATION**

(Action Is Optional)

**DIRECTIVE**

(Action Is Required)

**PRODUCT IMPROVEMENT**

(Enhance Product)

Product Series: See Below**Serial Numbers:****Advanced Tie Plate Inserter [ATPI]**

ATPI-023	931588	UPRR	RLPI-1901
ATPI-024	931588	UPRR	RLPI-1902
ATPI-025	931588	UPRR	RLPI-1903
ATPI-026	931588	UPRR	RLPI-1904

Dual Anchor Adjuster [DAA]

DAA-355	931583	UPRR	AASQ-1901
DAA-356	931583	UPRR	AASQ-1902
DAA-357	931583	UPRR	AASQ-1903
DAA-358	931583	UPRR	AASQ-1904

DAA-360	931583	UPRR	AASQ-2002
DAA-363	931583	UPRR	AASQ-2101
DAA-364	931583	UPRR	AASQ-2102

Dual Anchor Spreader [DAS]

DAS-275	931584	UPRR	AASP-1901
DAS-276	931584	UPRR	AASP-1902
DAS-282	931584	UPRR	AASP-2001

DAS-297	931584	UPRR	AASP+2101
DAS-298	931584	UPRR	AASP-2102

Dual Clip Applicator [DCA]

DCA-161	931585	UPRR	ECAM-1901
DCA-162	931585	UPRR	ECAM-1902
DCA-163	931585	UPRR	ECAM-1903
DCA-164	931585	UPRR	ECAM-1904

Summary: AT&T will discontinue to provide the cellular 3G service to the 3G modems installed on our equipment and will no longer be usable after February 2022.
discontinued.

Action: Use RRP Kit # 793085 to upgrade to 4G modem.

Completion / Resolution: Continue with normal machine operation after installing and updating the 4G modem.

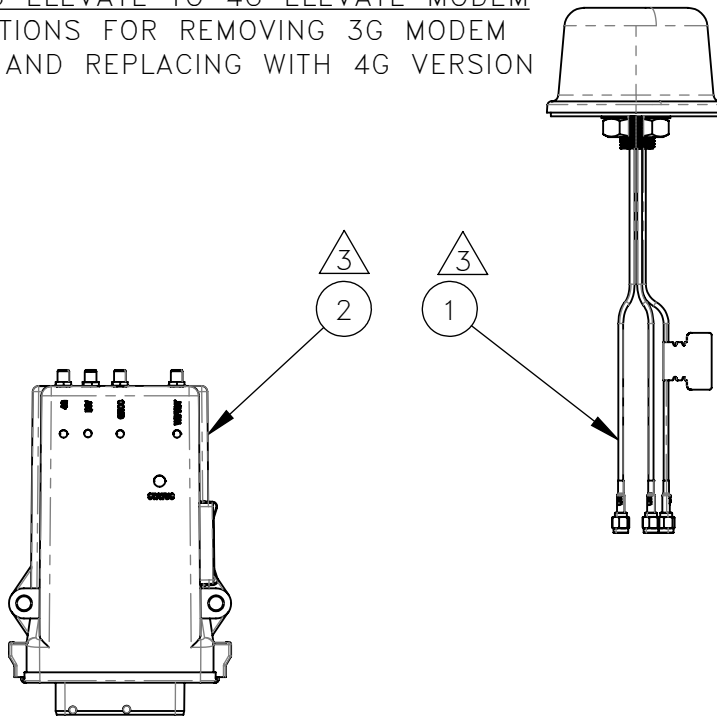
If you have any questions or we can be of any service, please contact the Racine Railroad Products Service Department at (262)-637-9681 or fieldservice@racinerailroad.com.

NO.	QTY	DESCRIPTION	PART NO.
1	1	ANTENNA, TELEMATICS	475251
2	1	MODEM, TELEMATICS	475252
3	1	INSTRUCTIONS, 4G MODEM KIT	800331

DWG NO

793085

UNIVERSAL: 3G ELEVATE TO 4G ELEVATE MODEM
SEE INSTRUCTIONS FOR REMOVING 3G MODEM
AND ANTENNA AND REPLACING WITH 4G VERSION



USED ON:

913583
915572
930587
931572
931583
931584
931588
932587
933588
935572
945581
945588

UNIVERSAL: 3G ELEVATE TO 4G ELEVATE

REV	EN	DESCRIPTION	DATE	DRN
1	5035	NEW RELEASE	5-20	SAG
2	6045	KIT, 3G TO 4G MODEM CONVERSION TO KIT, 4G MODEM, UPDATE DATA CARD	1-22	PR
3	6138	UPDATE MODELS PICTORIALY	2-22	PR

DIMENSION TOLERANCES UNLESS OTHERWISE SPECIFIED

LINEAR	.XX=±.03	.XXX=±.010
ANGULAR	X°=±1°	X.X°=±.5°

SURFACE FINISH 125/ SMOOTH ALL SHARP EDGES
NOT TO EXCEED ✓ CLEAN ALL WELDS

THIS PRINT AND ALL INFORMATION WITHIN
BELONGS TO RACINE RAILROAD PRODUCTS

RACINE RAILROAD PRODUCTS

RACINE, WISCONSIN USA

DESCRIPTION

KIT, 4G MODEM

MATERIAL

SEE BOM

USED ON		SCALE	DATE
SEE NOTE		1:4	05-29-20
DRN	CHK	APP	JOB NO
SG			RD190005
DWG SIZE		CATALOG	DWG NO
A		K	793085

SHEET
1 OF 1

- THESE INSTRUCTIONS ARE FOR KIT 793085.
- REMOVAL:
1. ENSURE MACHINE IS POWERED OFF BEFORE PERFORMING THE CONVERSION.
 2. UNPLUG 29-PIN CONNECTOR FROM EXISTING 3G MODEM.
 3. DETACH 3G ANTENNA CABLES FROM 3G MODEM.
 4. REMOVE EXISTING 3G MODEM. SAVE MOUNTING HARDWARE FOR REUSE.
- IMPORTANT NOTE: RECORD THE SERIAL NUMBER FOUND ON THE OLD 3G MODEM AND THE NEW 4G MODEM AND RETURN THAT INFORMATION TO RRP ENGINEERING SO THAT THE ELEVATE CONNECTION SOFTWARE CAN BE UPDATED FOR THE NEW MODEM. development@racinerrailroad.com
5. COMPLETELY REMOVE 3G ANTENNA. NOTE ROUTING OF CABLES.

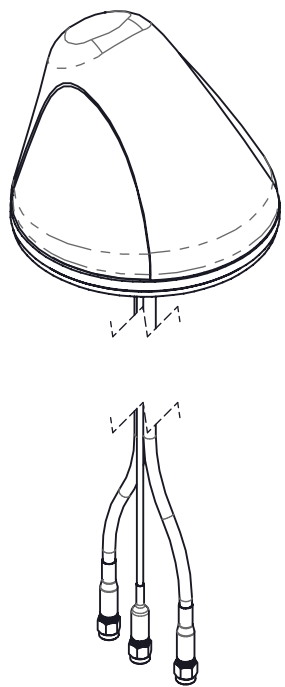
- INSTALLATION:
1. INCREASE EXISTING ANTENNIA FOR CLEARANCE HOLE TO A .88 DIA.
 2. INSTALL NEW 4G ANTENNA 475251 AND ROUTE CABLES THE SAME WAY AS THE OLD ANTENNA. (CABLES ON NEW ANTENNA SHOULD BE LABELED FOR FUNCTION)
 3. INSTALL NEW 4G MODEM IN SAME LOCATION AND ORIENTATION AS OLD 3G MODEM.
 4. INSTALL ANTENNA CABLES INTO MODEM, MATCHING LABELS ON ANTENNA CABLES TO MODEM CONNECTORS (SEE VIEW AC FOR 4G: 4 PORT MODEM & VIEW AC FOR THE 4G: 3 PORT MODEM).
 5. SHRINK WRAP UNUSED CONNECTORS.
 6. INSTALL 29 PIN CONNECTOR INTO MODEM.
 7. POWER-UP MACHINE AND ENSURE MODEM POWERS UP PROPERLY.

!!! CRITICAL STEP FOLLOW INFORMATION BELOW
ONCE MODEM IS INSTALLED, PLEASE EMAIL THE FOLLOWING INFORMATION TO:
development@racinerrailroad.com

- A. PICTURE OF THE MODEM'S SERIAL NUMBER.
- B. MACHINE'S SERIAL NUMBER.
- C. MACHINE RUNNING NUMBER.

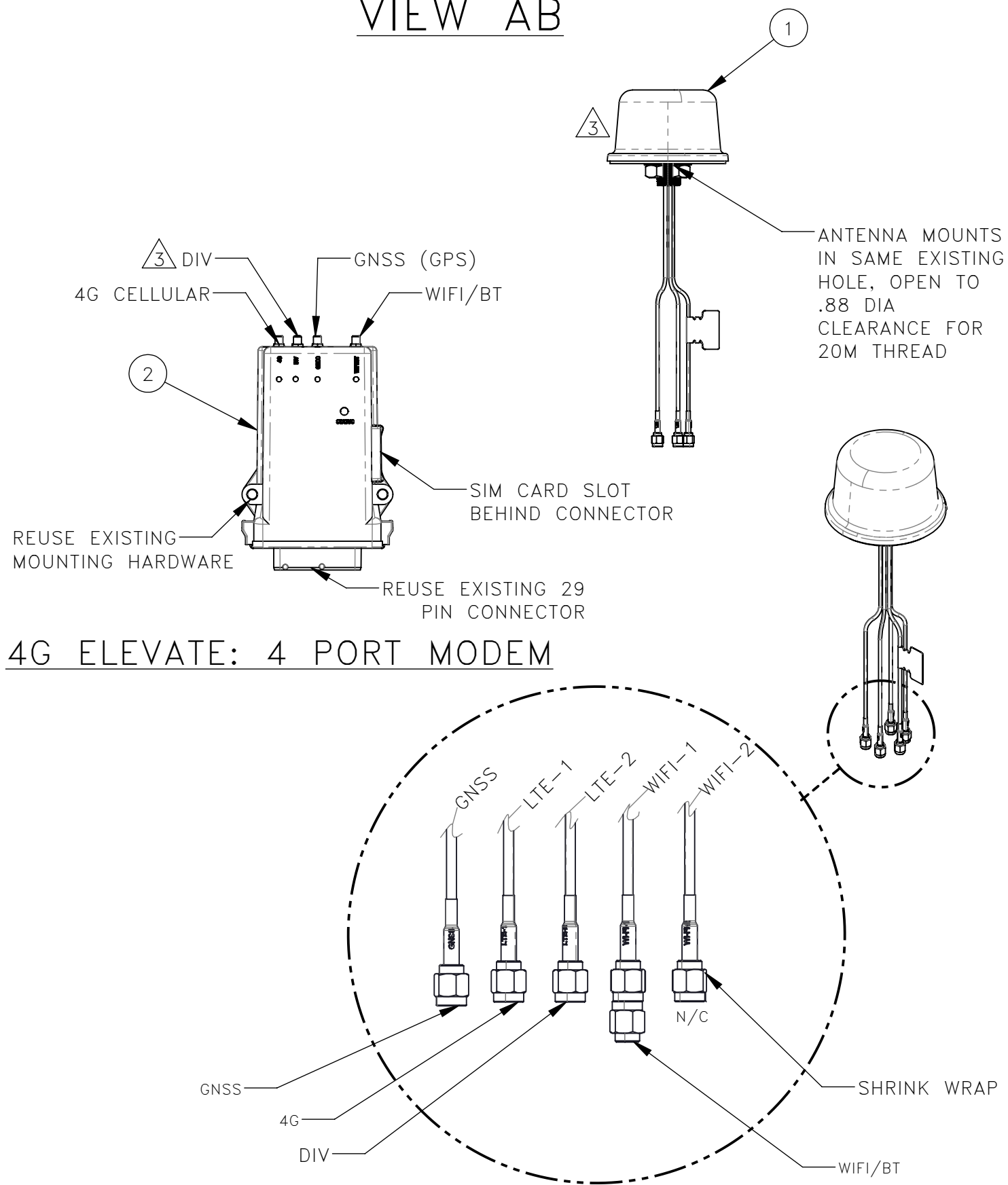
**FAILURE TO DO SO, WILL PREVENT US FROM PROPERLY ACTIVATING AND ASSIGNING YOUR MODEM.

NO.	QTY	DESCRIPTION	PART NO.
1	REF	ANTENNA, TELEMATICS	475251
2	REF	MODEM, TELEMATICS	475252

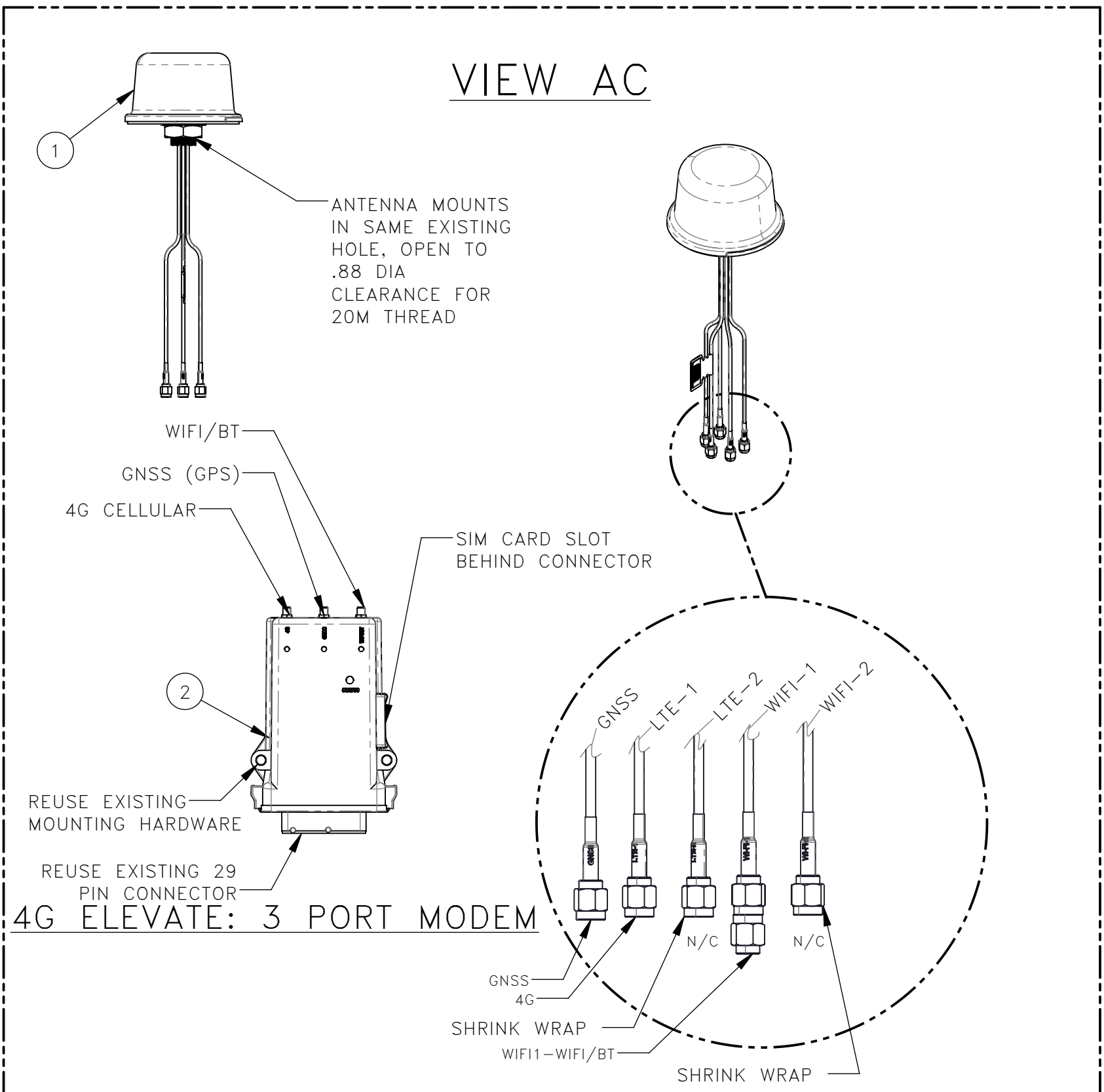


SEE VIEW AC FOR
REPLACEMENT ANTENNA
CONNECTIONS HOOK UP

VIEW AB



VIEW AC



REV	EN	DESCRIPTION	DATE	DRN
1	5035	NEW RELEASE	5-20	SAG
2	6045	INSTRUCTIONS, 3G TO 4G MODEM CONVERSION TO INSTRUCTIONS, 4G MODEM KIT, UPDATE DATA CARD	1-22	PR
3	6138	ADD VIEW AC AND VIEW AB. UPDATE INSTRUCTIONS.	2-22	PR

DIMENSION TOLERANCES UNLESS OTHERWISE SPECIFIED

LINEAR	.XX=±.03	.XXX=±.010
ANGULAR	X°=±1°	X.X°=±.5°

SURFACE FINISH	125/	SMOOTH ALL SHARP EDGES
NOT TO EXCEED		CLEAN ALL WELDS

THIS PRINT AND ALL INFORMATION WITHIN BELONGS TO RACINE RAILROAD PRODUCTS

RACINE RAILROAD PRODUCTS
RACINE, WISCONSIN USA

DESCRIPTION
INSTRUCTIONS, 4G MODEM KIT

MATERIAL
SEE BOM

USED ON	800331	SCALE	1:3	DATE	05-29-20
---------	--------	-------	-----	------	----------

DRN	SG	CHK	APP	JOB NO	RD190005	SHEET	1 OF 1
-----	----	-----	-----	--------	----------	-------	--------

DWG SIZE	C	CATALOG	N	DWG NO	800331
----------	---	---------	---	--------	--------