

Service Bulletin

Maintenance of Way Equipment

Date: 5.24.2022

RRP Service Bulletin No: RRP SB381

Title: Advanced Tie Plate Inserter [ATPI] mVEC Decal Replacement Kit

Rating:



ALERT
 (Potential Problem)



INFORMATION
 (Action Is Optional)



DIRECTIVE
 (Action Is Required)



PRODUCT IMPROVEMENT
 (Enhance Product)

Product Series: Advanced Tie Plate Inserter [ATPI]

Serial No:

UPRR ATPI's

| | | | |
|-------------|--------|------|-----------|
| ATPI-002-17 | 915574 | UPRR | RLPI-1701 |
| ATPI-003-17 | 915574 | UPRR | RLPI-1702 |
| ATPI-004-17 | 915574 | UPRR | RLPI-1703 |
| ATPI-005-17 | 915574 | UPRR | RLPI-1704 |
| ATPI-006-17 | 915574 | UPRR | RLPI-1705 |

| | | | |
|-------------|--------|------|-----------|
| ATPI-007-17 | 915574 | UPRR | RLPI-1706 |
| ATPI-011 | 915574 | UPRR | RLPI-1801 |
| ATPI-012 | 915574 | UPRR | RLPI-1802 |
| ATPI-013 | 915574 | UPRR | RLPI-1803 |

Summary: Depending on environmental conditions, the relays may overheat, and covers are removed to cool relays.

Action: Remove covers and replace mVec decals. Refer to attached RRP Kit # 793170 and instructions RRP# 800395.

Completion / Resolution: Continue with normal machine operation after replacing the mVec decals.

| NO. | QTY | DESCRIPTION | PART NO. |
|-----|-----|--------------------------------------|----------|
| 1 | 1 | DECAL, MVEC MODULE 4 | 473088 |
| 2 | 1 | DECAL, MVEC MODULE 5 | 473091 |
| 3 | 1 | DECAL, MVEC MODULE 6 | 473096 |
| 4 | 1 | PLACARD, MVEC MODULE SERVICE PARTS | 476345 |
| 5 | 1 | DECAL, GB-2 GROUND BUS BAR | 476391 |
| 6 | 1 | DECAL, GB-1 NEG./COM. BUS BAR | 476392 |
| 7 | 1 | INSTRUCTIONS, MVEC DECAL REPLACEMENT | 800395 |

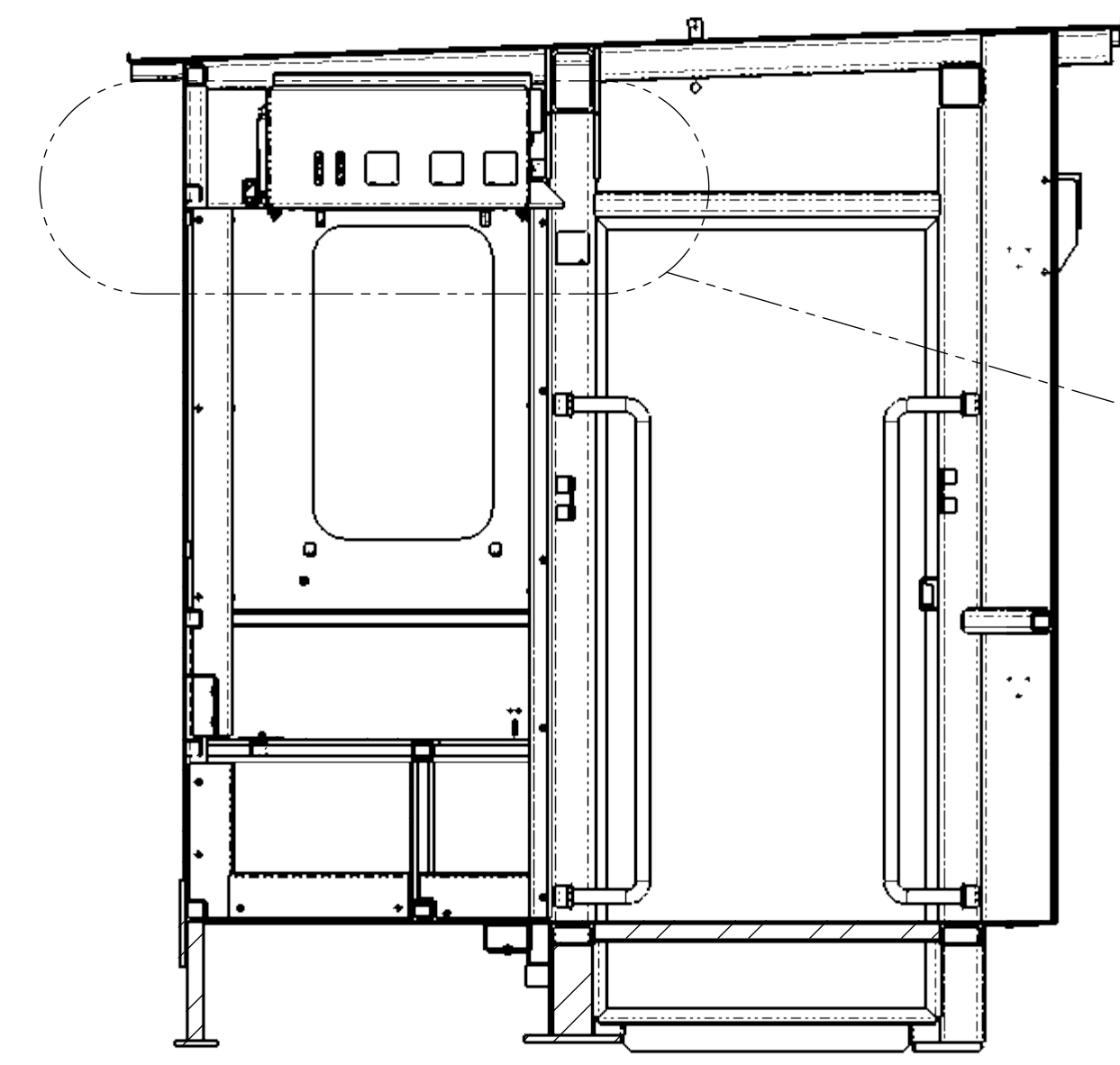
DWG NO
793170

MVEC DECAL REPLACEMENT KIT
FOR 718149 MODULES

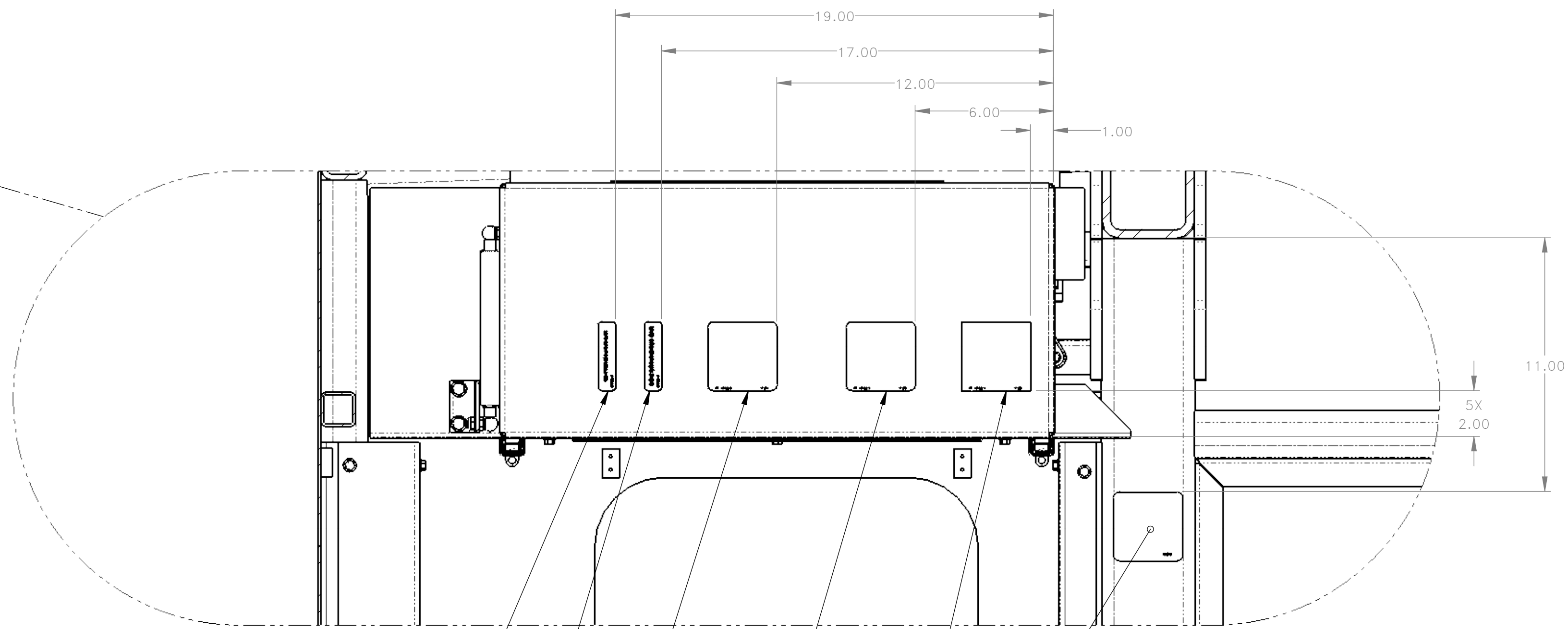
USED ON:
915574

| REV | EN | DESCRIPTION | DATE | DRN |
|--|------|---------------------|---|------------------|
| 1 | 6257 | NEW RELEASE | 5-22 | PR |
| DIMENSION TOLERANCES UNLESS OTHERWISE SPECIFIED | | | | |
| LINEAR | | .XX=±.03 | .XXX=±.010 | |
| ANGULAR | | X°=±1° | X.X°=±.5° | |
| SURFACE FINISH 125/ NOT TO EXCEED | | | SMOOTH ALL SHARP EDGES CLEAN ALL WELDS | |
| THIS PRINT AND ALL INFORMATION WITHIN BELONGS TO RACINE RAILROAD PRODUCTS | | | | |
| RACINE RAILROAD PRODUCTS | | | | |
| RACINE, WISCONSIN USA | | | | |
| DESCRIPTION KIT, MVEC DECAL REPLACEMENT | | | | |
| MATERIAL SEE BOM | | | | |
| USED ON 718000 | | | SCALE 1:12 | DATE 05-12-22 |
| DRN PR | CHK | APP | JOB NO RD150003 | SHEET 1 OF 1 |
| DWG SIZE A | | CATALOG K | DWG NO 793170 | |

| NO. | QTY | DESCRIPTION | PART NO. |
|-----|-----|------------------------------------|----------|
| 1 | REF | DECAL, MVEC MODULE 4 | 473088 |
| 2 | REF | DECAL, MVEC MODULE 5 | 473091 |
| 3 | REF | DECAL, MVEC MODULE 6 | 473096 |
| 4 | REF | PLACARD, MVEC MODULE SERVICE PARTS | 476345 |
| 5 | REF | DECAL, GB-2 GROUND BUS BAR | 476391 |
| 6 | REF | DECAL, GB-1 NEG./COM. BUS BAR | 476392 |



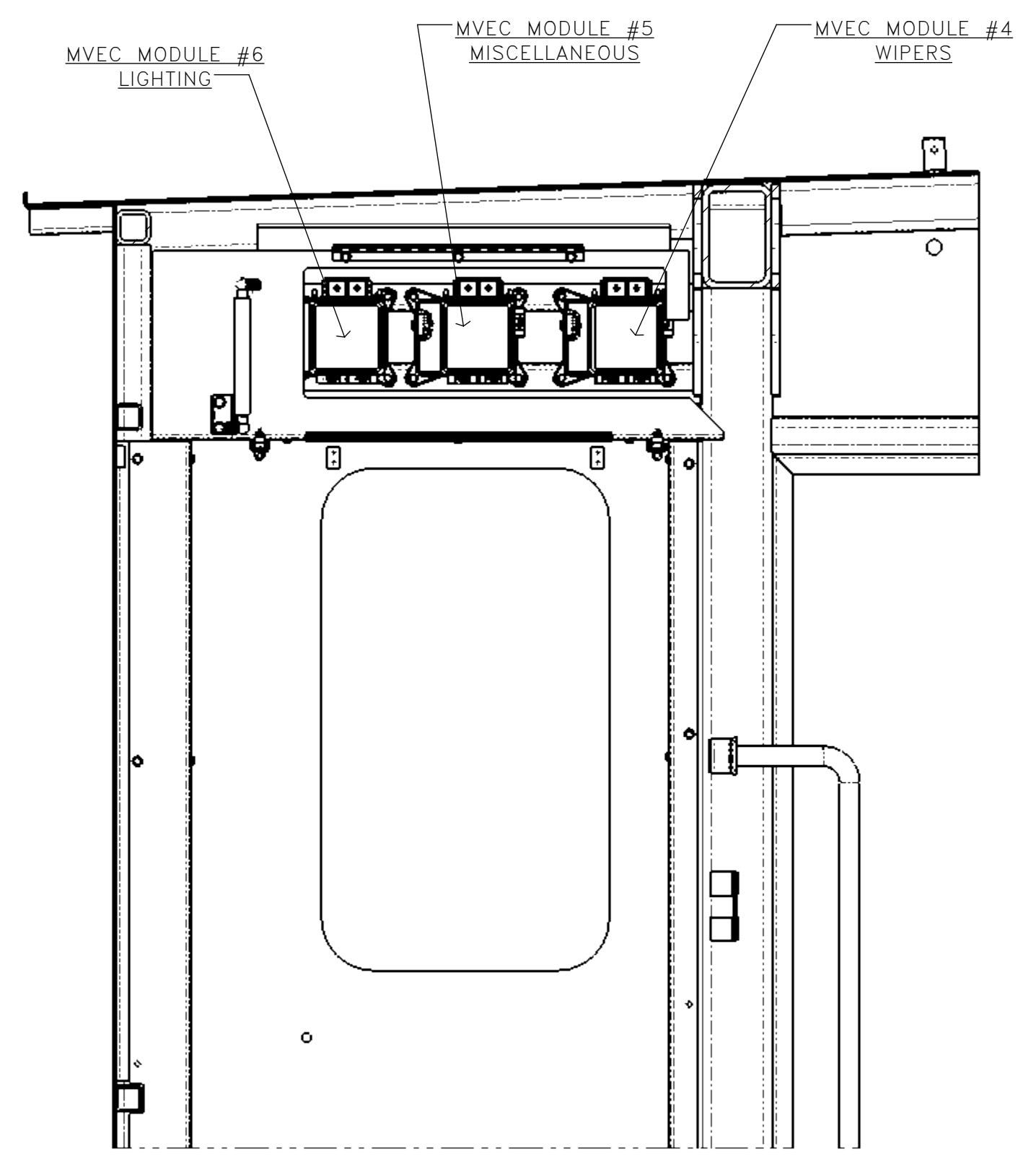
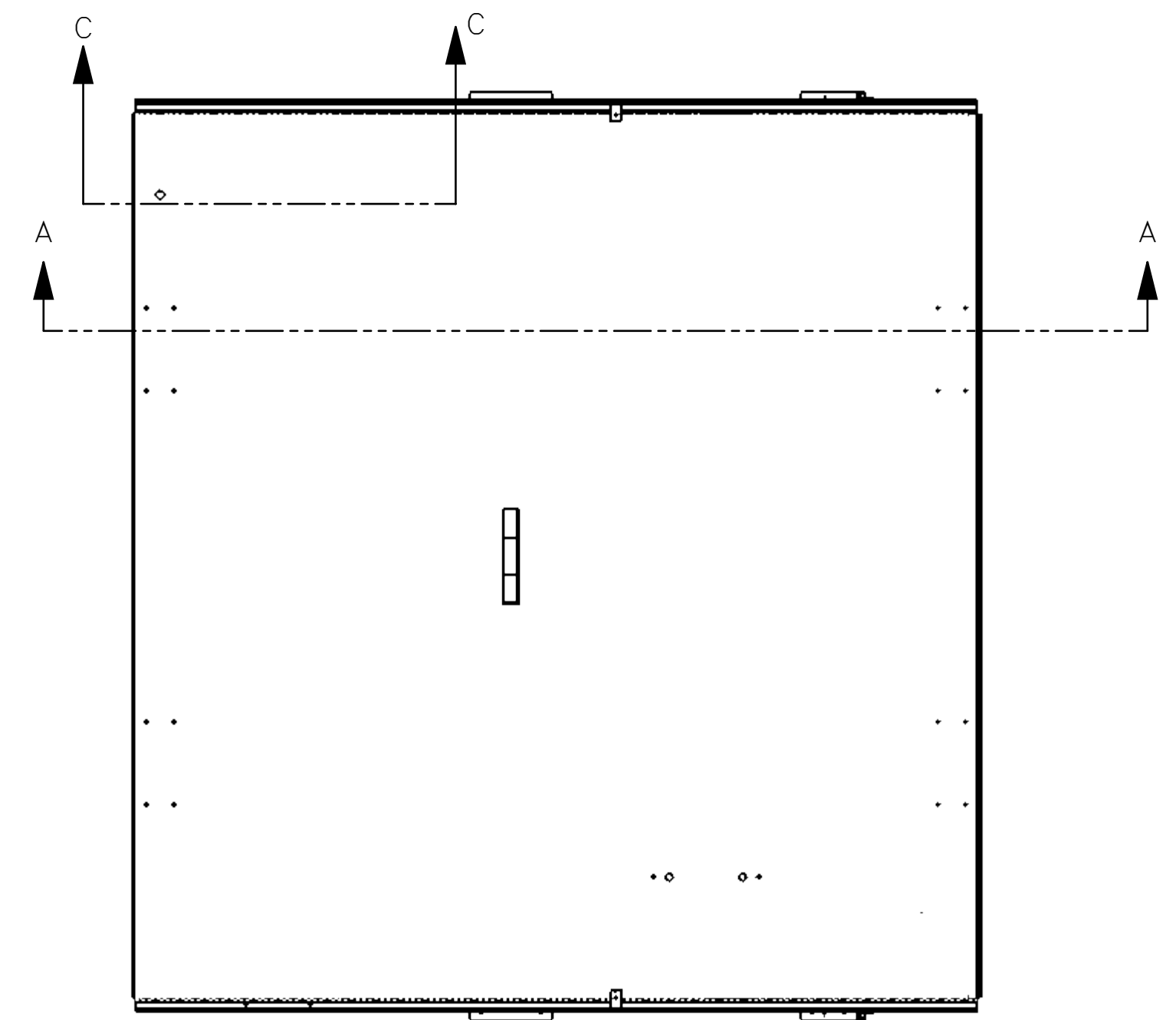
SECTION A-A
SCALE 1 : 16



DETAIL B
MVEC DOOR CLOSED
SCALE 1 : 4

THESE INSTRUCTIONS ARE FOR KIT 793170

1. REMOVE ALL MVEC COVERS & DISCARD. (SEE SECTION C-C).
2. ATTACH NEW DECALS (SEE DETAIL B).



SECTION C-C
MVEC DOOR OPENED
SCALE 1 : 8

| REV | EN | DESCRIPTION | DATE | DRN |
|-----|------|-------------|------|-----|
| 1 | 6257 | NEW RELEASE | 5-22 | PR |

DIMENSION TOLERANCES UNLESS OTHERWISE SPECIFIED

| | | |
|---------|----------|------------|
| LINEAR | .XX=±.03 | .XXX=±.010 |
| ANGULAR | X'=±1° | X.X'=±.5° |

SURFACE FINISH NOT TO EXCEED 125/ SMOOTH ALL SHARP EDGES CLEAN ALL WELDS

THIS PRINT AND ALL INFORMATION WITHIN BELONGS TO RACINE RAILROAD PRODUCTS

RACINE RAILROAD PRODUCTS
RACINE, WISCONSIN USA

DESCRIPTION
INSTRUCTIONS, MVEC DECAL REPLACEMENT KIT

MATERIAL
SEE BOM

| | | | |
|---------|--------|-------|----------|
| USED ON | 793170 | SCALE | DATE |
| | | 1:3 | 05-12-22 |

| | | | | |
|-----|-----|-----|----------|--------|
| DRN | CHK | APP | JOB NO | SHEET |
| PR | | | RD190003 | 1 OF 1 |

| | | |
|----------|---------|--------|
| DWG SIZE | CATALOG | DWG NO |
| D | A | 800395 |