



Service Bulletin

Maintenance of Way Equipment

Date: 06/18/210

RRP Service Bulletin No: RRP SB236

Title:

Rating:

ALERT

(Potential Problem)

INFORMATION

(Action Is Optional)

DIRECTIVE

(Action Is Required)

PRODUCT IMPROVEMENT

(Enhance Product)

Product Series: Portable Gas Power Unit / 910136.

Serial No: 1006817-1 thru-06, 1006817-07 thru-10, 1006818-01 thru-10

Summary: This bulletin covers a potential problem with loss of battery power due to the cooling fan running after the key switch has been turned off.

Under very hot conditions, the fan runs too long causing the battery to draw down to the point where starting becomes difficult. To correct this problem, a power relay is required to shut the fan off with the key switch.

Action: The units may be returned to Racine Railroad Products by contacting (262) 637-9069 or custserv@racinerailroad.com for return authorization. The upgrade will be performed free of charge and will cover material and labor. Shipping and handling is not included.

The repair can also be performed by obtaining retrofit kit# 0000414 KIT, RELAY RETROFIT. Follow the instructions listed on the following page. The kit is available by returning the request form on the last page.

Completion: Turning off the power unit will turn off the fan.

Procedure

The gas hydraulic power unit should be turned off and cool prior to installing kit. For safety, disconnect positive cable from battery.

1. Locate the yellow wire connected to the "Low Oil Indicator Light" coming from the back of the ignition switch box.
2. Locate the white wire coming from the key switch.
3. Crimp a blue T-Tap terminal onto each wire.

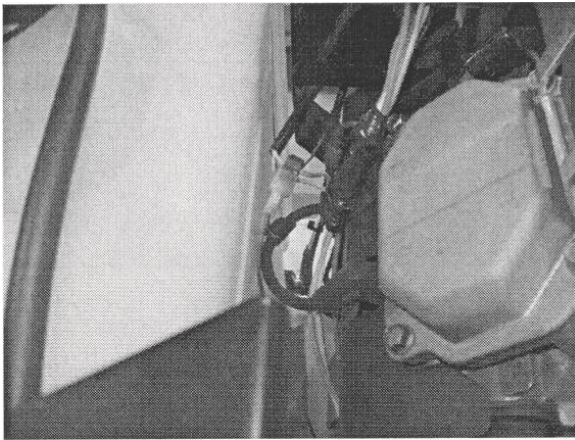


Figure 1

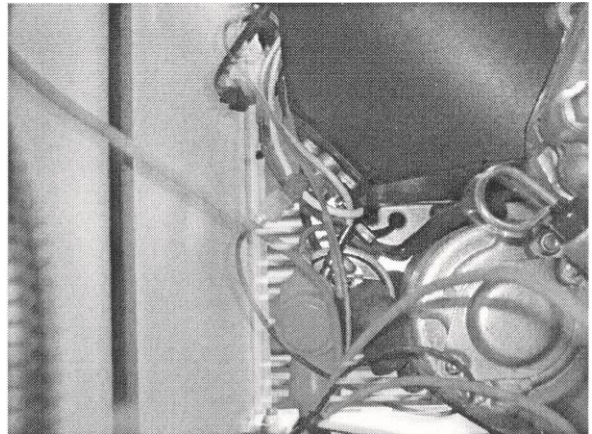


Figure 2

4. Locate the orange wire connected to the fuse plug near the battery.

Cut this wire and strip both cut ends 1/4" bare.

5. Strip all but the #4 red wire on the relay field connector.

Crimp the nylon spade connector to the blue and black wires.

Crimp one end of the heat shrinkable butt splice connectors to red #3 and #5 wires.

Note: Numbers refer to numbers on the relay, not the plug.



Figure 3



6. Crimp other end of butt splice connectors to stripped ends of orange wires.

Heat butt splice insulation and shrink onto wire.

7. Plug blue wire spade connector into blue T-Tap connector on yellow wire.
8. Plug black wire spade connector into blue T-Tap connector on white wire.

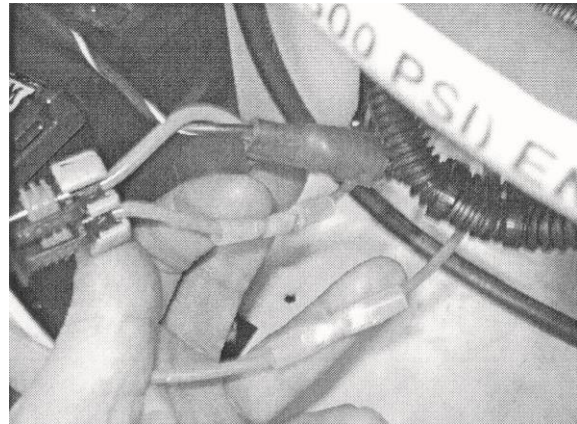


Figure 4

9. Plug relay into field connector.
10. Pull tie relay assembly to a solid item on the unit, like the positive battery cable.
11. Reconnect positive battery cable, start unit and heat oil until fan comes on.
12. Shut off key switch to verify that the fan shuts off with key.

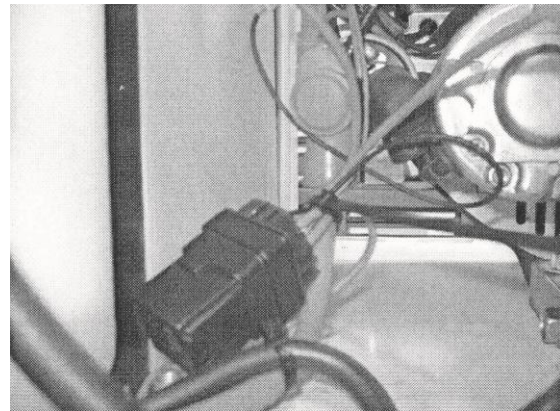


Figure 5

Below is a circuit diagram for the installation.

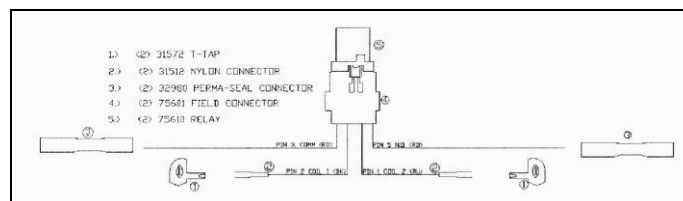


Figure 6



Retrofit request form:

Name

Company

Street

City/State/Zip

Contact Phone

Email

Serial Numbers:



Contact: If you have any questions or we can be of any service, please contact the Racine Railroad Products service department at (262)-637-9681 or custserv@racinerailroad.com.

Safety Terms



DANGER indicates a hazardous operating procedure, practice, or condition. If the hazardous situation is not avoided death or serious injury will occur.



WARNING indicates a hazardous operating procedure, practice, or condition. If the hazardous situation is not avoided death or serious injury could occur.



CAUTION indicates a potentially hazardous operating procedure, practice, or condition. If the hazardous situation is not moderate or minor injury could occur.

Note: Indicates an essential operating procedure, practice, or condition. No personal injury is possible.