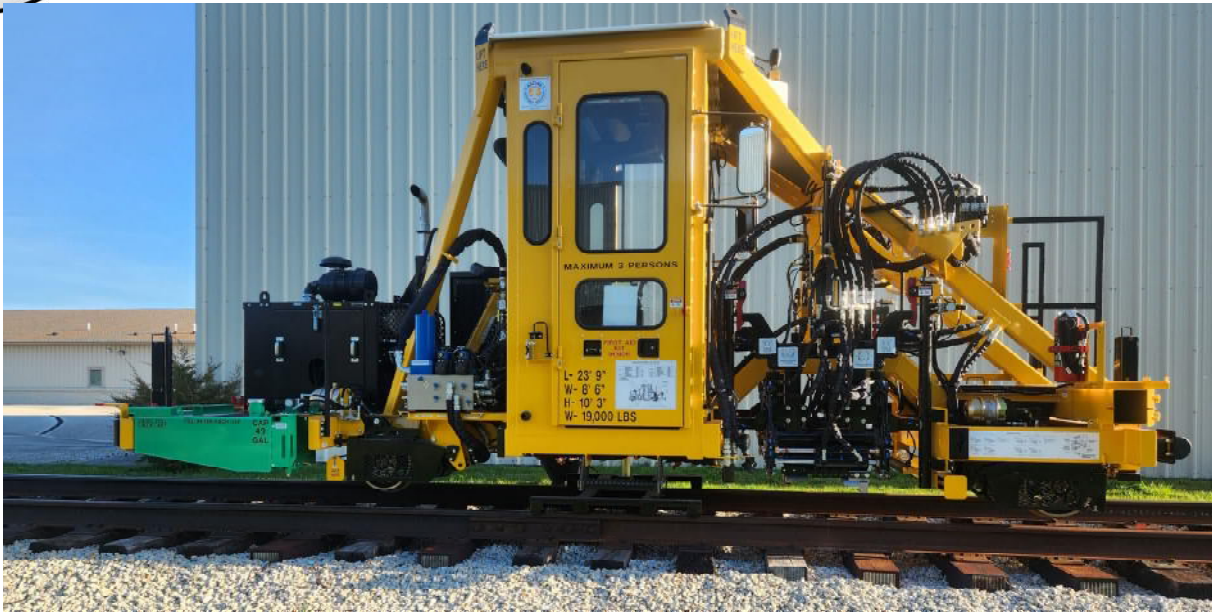




Dual Clip Applicator / Remover

INNOVATIVE DESIGNS FROM RACINE RAILROAD PRODUCTS



RRP Design

The Dual Clip Applicator / Remover is a dual workhead machine designed to apply 4 pre-set clips to both rails, or 2 pre-set clips to either rail, or remove e-Clips on one or two rails.

The workhead design allows the removal of clips with a simple tooling change.

Innovative Technology

- Programmable MD4 controlled automation has faster & smoother cycle times than previous RRP machines.
- Onboard electrical system diagnostics that simplify troubleshooting and lessen downtime.
- Remote program updates and remote troubleshooting with built-in telematics available.

Easy Set-up and Operation

- Easy touchscreen controls for workhead adjustments are made inside the cab from the operator seat, saving time while keeping the operator in a safe environment.
- Auto and Manual operation modes.
- Reliable workhead design provides years of trouble-free service.

Versatile

- In-cab adjustments align the workhead to accommodate rail height.



Operator Station with ergonomic seat & joystick controls.

Video of the Dual Clip Applicator: <https://tinyurl.com/2s3nvxvp>



Dual Clip Applicator / Remover

INNOVATIVE DESIGNS FROM RACINE RAILROAD PRODUCTS



Specifications

- Dimensions: 22'7" L x 8'5" W x 10'2" H
- Weight: 22,00 lbs
- Travel Speed: 25 MPH
- Engine: We offer a variety of engine packages to choose from, No DEF
- Fuel Capacity: 50 Gallons
- Hydraulic Reservoir: 58 Gallons (Case Drain Filter, Pressure Filter, & Return Filter options available)
- 24 volt system with circuit breakers for lights & accessories
- Seating Capacity: 1 operator & two passengers

Features

- Excellent visibility of the work zone, increasing productivity and reducing wear on machine travel components.
- Machine has un-obstructed operator visibility fore and aft when track traveling.
- Cab: Enclosed Heat & A/C, full ergonomic seat with joystick controls, tinted safety glass for operator comfort.
- Various HVAC options to choose from.
- Multiple storage options for tools & equipment
- Two joystick controls to control each side of the workhead independently.
- Center H-Frame turntable that sets on the rails to manually rotate the machine as needed.
- Easy accessibility to workhead components to perform routine maintenance.



Operator Touchscreen Control Panel for Workhead Adjustment and Diagnostic Troubleshooting

For a complete list of specifications and machine options available, contact Racine Railroad Products, Inc. at:
Tel (262) 637-9681 / email: custserv@racinerailroad.com
1955 Norwood Court Mount Pleasant, Wisconsin 53403

