



# F-Clipper



INNOVATIVE DESIGN FROM RACINE RAILROAD PRODUCTS



## One Machine Does Two Jobs

Only Dual Workhead Production / Maintenance machine with the capability of applying or retracting the Pandrol® Fast Clip.

## Productive

A single operator can simultaneously apply 2 or 4 clips.

## 3 Retract Positions

The three position retraction feature allows the operator to position the clip for a specific need:

- Position 1 – rail change out or rail de-stressing
- Position 2 – rail insulator replacement
- Position 3 – clip or toe insulator replacement

## Interchangeable Workhead

Change out the Fast Clip® workhead with the Safelok® workhead for added cost effective production capabilities.



Close-up of retract tool in down position prior to clip removal.

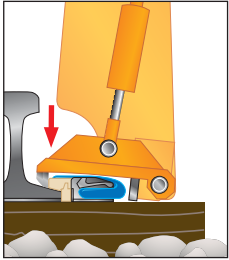


# F-Clipper

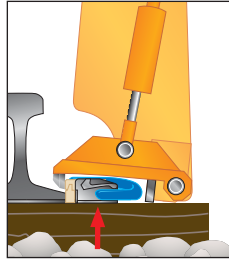


INNOVATIVE DESIGN FROM RACINE RAILROAD PRODUCTS

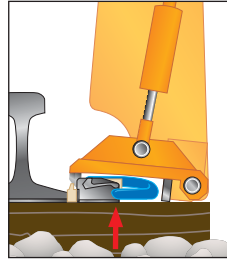
## Retract Operation



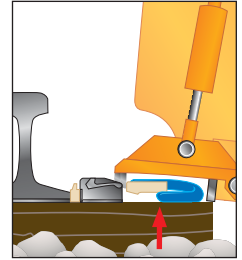
Workhead is optically indexed over clip assemblies. Workhead is lowered, retract tool swings down engaging clip nose.



Position 1 – retracted for rail change out or rail de-stressing.

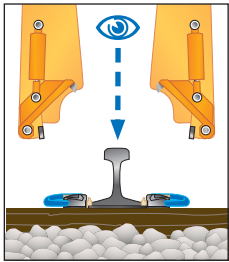


Position 2 – retracted for rail insulator replacement.

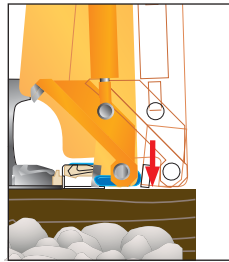


Position 3 – fully retracted for clip or toe insulator replacement.

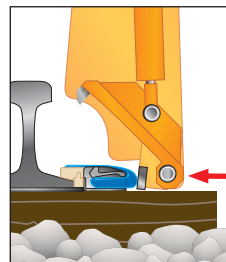
## Apply Operation



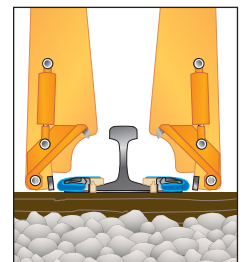
Workhead is optically indexed over both clip assemblies.



Work arms are lowered into position.



Steady pressure is applied to clips eliminating the need for stressing hammer blows.



Work arms are opened and the machine is moved to next tie.

## PRODUCT SPECIFICATIONS:

- We offer a variety of engine packages to choose from
- Structural steel frame with derail skirts, key hole tie downs, rubber bumpers
- Insulated axles with self aligning, double row spherical roller bearings and axle locks
- Propulsion is chain driven using axle mounted split sprockets with a travel speed of 25 mph
- 24 VDC negative ground with a 60 amp system fuse. Circuit breakers for lights and accessories
- 58 gallon hydraulic reservoir with clean out covers, guarded fluid level and temperature gauge
- 50 gallon fuel tank with 2" diameter fill neck, bottom sump and mechanical fluid level gauge
- Dimensions:

28' 5" L x 8' 5" W x 10' 4" H

Weight: 22,000 lbs

For a complete list of specifications and machine options available, contact Racine Railroad Products, Inc. at:  
Tel (262) 637-9681 • Fax (262) 637-9069 • email: [custserv@racinerailroad.com](mailto:custserv@racinerailroad.com)  
1955 Norwood Court • Mount Pleasant, Wisconsin 53403