

3122K

Reservdelar

Spare parts

Ersatzteile

Pieces de rechange

Piezas de repuesto

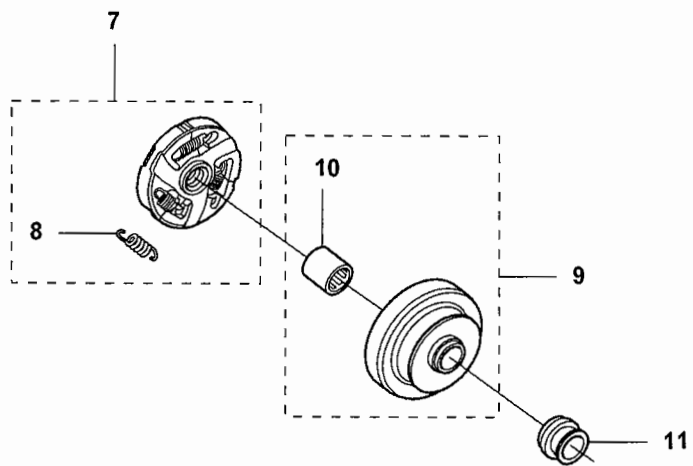
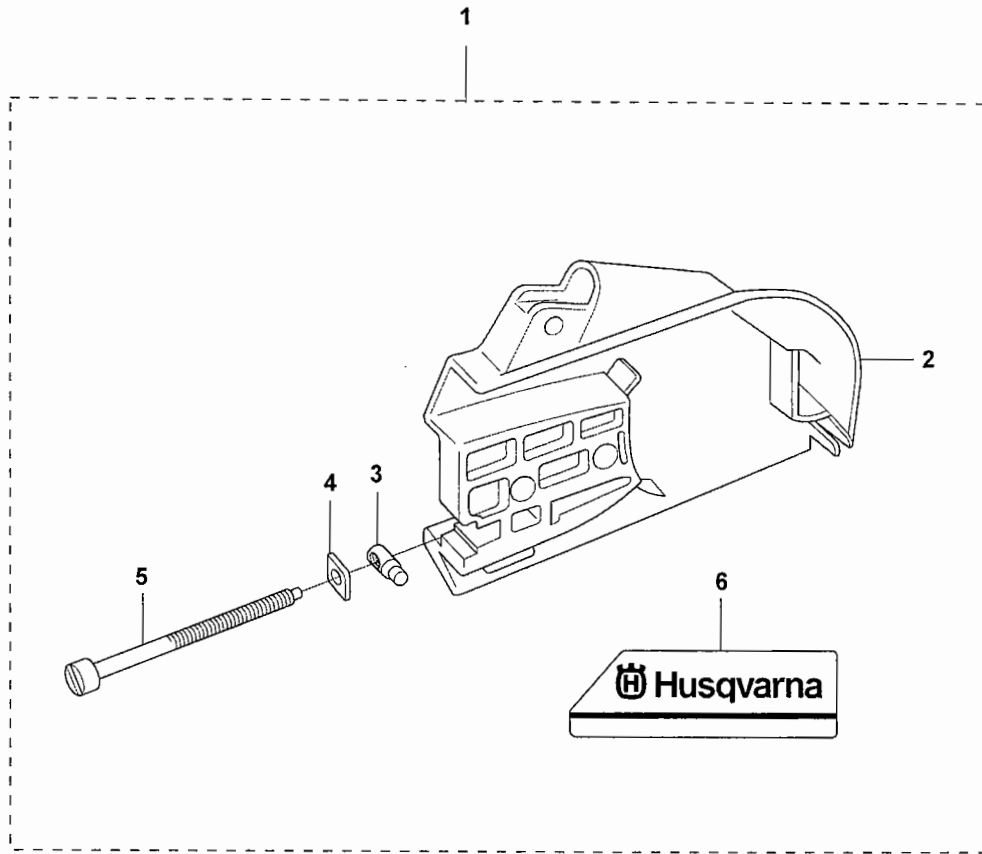
Ricambi

Peças sobresselente

No.	Pos.	Description	No.	Pos.	Description
501 89 63-02	A	CLUTCH COVER ASSY	503 52 58-01	L	VALVE CHOKE
501 24 81-01	A	LOCKING NUT	503 52 59-01	L	SPRING THROTT RETURN
501 26 97-04	FG	VIB.INSULATOR	503 52 60-01	L	PIN THROTTLE STOP
501 27 08-01	F	GUIDE BUSHING	503 54 39-01	K	STARTER HANDLE
501 46 75-01	L	GASKET-METERING DIAP	503 56 34-01	L	VALVE INLET NEEDLE
501 46 84-01	L	SPRING-CHOKE FRICT.	503 56 45-01	L	SEAL-THROTTLE SHAFT
501 46 85-01	L	BALL-CHOKE FRICTION	503 57 42-01	L	PLUG-WELCH
501 48 54-02	J	SPARK PLUG CAP	503 57 76-02	H	FUEL HOSE
501 63 06-01	K	REINFORCEMENT SLEEVE	503 57 89-01	H	HOLDER
501 63 48-01	J	SPRING	503 59 55-01	L	O-RING
501 66 61-01	L	SCREEN-INLET	503 59 56-01	L	LEVER THROTTLE
501 67 32-03	J	PAWL	503 59 57-01	L	LEVER THROTTLE INNER
501 69 28-01	L	COVER-METERING DIAPH	503 59 58-01	L	COVER-PUMP
501 76 83-04	H	FUEL HOSE	503 59 59-01	L	SHAFT ASS'Y THROTTLE
501 81 47-01	H	ANTIVIBRATIONS ELEME	503 59 65-01	L	SCREW
501 81 57-01	F	BAR BOLT	503 59 72-01	L	WASHER
501 83 98-03	J	CABLE	503 59 74-02	L	GASKET KIT
501 89 41-03	C	PISTON CPL	503 59 84-01	L	FITTING FUEL INLET
501 89 59-02	K	AIR CONDUCTOR	503 62 42-01	A	DECAL
501 89 64-01	A	CLUTCH COVER	503 63 24-01	L	VALVE THROTTLE
501 89 66-01	K	STARTER HOUSING	503 63 28-01	L	DIAPHRAGM ASSY METER
501 89 67-01	K	STARTER PULLEY	503 63 29-01	L	SCREW IDLE SPEED
502 10 31-01	L	BUSHING-THROTT.SPR.	503 63 31-01	L	SPRING
502 85 08-01	C	MUFFLER SUPPORT	503 63 32-01	L	NEEDLE IDLE SPEED
503 11 72-01	L	GASKET-PUMP	503 66 56-01	C	DECOMPRESSION VALVE
503 11 73-01	L	DIAPHRAGM-PUMP	503 74 36-01	K	DAMPING DISC
503 11 75-01	L	SCREW-PUMP COVER	503 97 66-01	L	NOZZLE ASSY
503 13 13-05	CDFM	GASKET MUFFLER	504 35 72-01	H	SINTER PLUG
503 13 16-01	H	THROTTLE LOCKOUT	504 90 94-65	D	SCREW
503 13 18-01	H	SPRING	505 26 76-50	A	DRAW PIECE
503 13 20-01	F	GROMMET	505 27 75-16	J	INSULATING CAP
503 13 25-02	H	AV-ELEMENT	505 31 67-17	L	SCREW-LEVER PIN
503 13 26-02	H	AV-ELEMENT	505 31 67-31	L	PIN-METERING LEVER
503 13 27-02	H	AV-ELEMENT	505 31 67-34	L	LEVER-METERING
503 13 29-01	CE	NEEDLE HOLDER	505 31 67-37	L	SPRING-NEEDLE
503 13 36-01	H	THROTTLE LEVER	505 31 67-48	L	WASHER
503 13 45-01	CDFM	CRANKCASE GASKET	505 41 79-01	C	MUFFLER
503 13 46-01	CDFM	GASKET	505 41 90-01	C	EXHAUST DUCT
503 13 50-01	K	RECOIL SPRING ASSY	505 42 04-01	H	NUT
503 13 57-01	A	CHAIN TENSION SCREW	506 00 69-01	J	SCREW
503 14 08-01	H	BUSHING	506 02 83-01	L	WASHER
503 14 21-06	H	TANK UNIT ASSY	506 23 34-01	H	SUPPORT
503 14 23-01	H	THROTTLE CATCH	506 23 70-01	F	AIR NOZZLE
503 14 37-01	D	SEALING	506 24 04-01	B	FILTER COVER
503 14 49-01	A	CLUTCH ASSY	506 24 05-01	B	FILTER BOTTOM
503 14 51-01	A	CLUTCH SPRING	506 24 13-01	D	INLET BEND
503 14 54-02	F	GROMMET	506 24 98-02	B	AIR FILTER
503 19 22-01	L	SCREW PAN HD(M2.5x5)	506 25 02-01	D	BELLOWS
503 21 06-16	K	SCREW	506 25 03-01	B	INSERT
503 21 28-06	J	SCREW	506 25 04-01	D	SUPPORT
503 21 45-16	H	SCREW	506 25 43-01	F	CHOKE CONTROL
503 21 53-10	G	SCREW	506 25 46-01	D	CHISEL GUIDE
503 21 53-12	CFGH	SCREW	506 25 49-03	A	GEAR WHEEL ASSY
503 21 53-20	DFJ	SCREW	506 25 59-03	H	TANK CAP ASSY
503 21 53-25	FH	SCREW	506 26 41-01	H	FUEL FILTER
503 21 53-26	K	SCREW	506 26 41-11	H	FUEL FILTER
503 21 53-30	B	SCREW	506 26 86-01	B	PREFILTER
503 21 53-41	F	SCREW	506 27 11-01	H	HOSE CLAMP
503 21 54-20	G	SCREW	506 27 43-02	CDFM	GASKET
503 22 10-03	J	NUT	506 27 52-02	D	FLANGE
503 23 00-05	C	WASHER	506 27 53-01	B	CYLINDER COVER
503 23 00-11	F	WASHER	506 28 39-30	B	SEALING
503 23 00-42	J	WASHER STEEL	506 28 59-01	A	SPACING SLEEVE
503 23 43-02	K	WASHER	506 28 97-01	D	FLANGE
503 23 51-09	CJ	SPARK PLUG	506 28 98-01	H	THROTTLE WIRE
503 25 00-02	EF	BALL BEARING	506 29 21-01	H	GASKET
503 25 38-01	A	NEEDLE BEARING	506 29 24-03	CDFM	GASKET KIT
503 26 02-05	CDFM	SEALING RING	506 29 39-01	H	TANK WENT
503 28 12-70	DL	CARBURETTOR	506 31 38-01	D	INSERT
503 28 90-26	C	PISTON RING	506 31 86-02	J	STOP SWITCH

No.	Pos.	Description	No.	Pos.	Description
506 33 56-25	K	STARTER CORD			
506 33 56-50	K	STARTER CORD			
506 34 14-01	C	COOLING PLATE			
506 38 26-01	M	TOOL			
506 38 78-34	J	IGNITION CABLE			
510 11 56-01	J	IGNITION MODULE			
516 00 24-01	C	SCREW			
521 95 48-01	G	HANDLE			
522 89 20-04	J	FLYWHEEL ASSY			
525 82 04-01	G	GROUND SUPPORT			
530 03 50-15	L	SCREW-VALVE			
537 00 28-01	L	RING			
537 00 29-01	L	COVER			
537 00 30-01	L	SHAFT ASS'Y			
537 00 31-01	L	SCREW			
537 15 34-01	L	JET			
544 21 84-20	CFH	SCREW			
544 21 84-47	G	SCREW			
544 81 16-01	G	BASE			
574 51 22-01	H	NUT LOCKING			
574 56 04-01	C	SCREW			
576 22 39-02	F	CRANKCASE			
576 27 00-02	C	CYLINDER			
576 76 90-01	L	SPRING-METER.LEVER			
577 26 20-01	K	STARTER ASSY			
577 29 92-01	B	LABEL			
577 32 76-01	K	LABEL			
577 34 38-01	E	CRANKSHAFT ASSY			
720 12 40-20	H	PARALLEL PIN			
720 12 78-06	H	PIN			
721 42 06-00	F	PIN			
734 11 47-41	G	WASHER			
735 11 73-50	J	SPRING WASHER			
735 88 06-00	E	WOODRUFF KEY			
737 44 13-00	C	CIRCLIP			

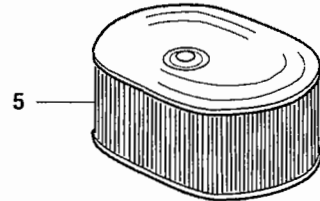
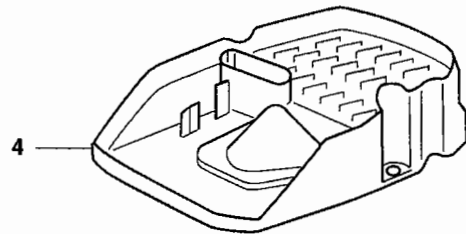
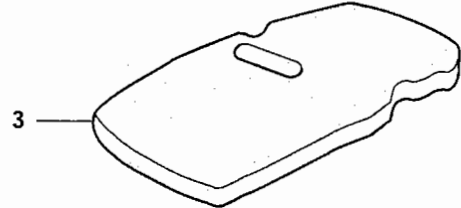
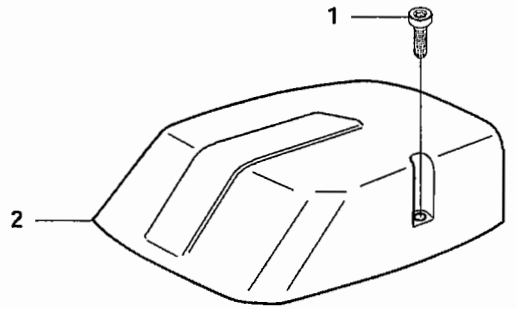
A 3122K



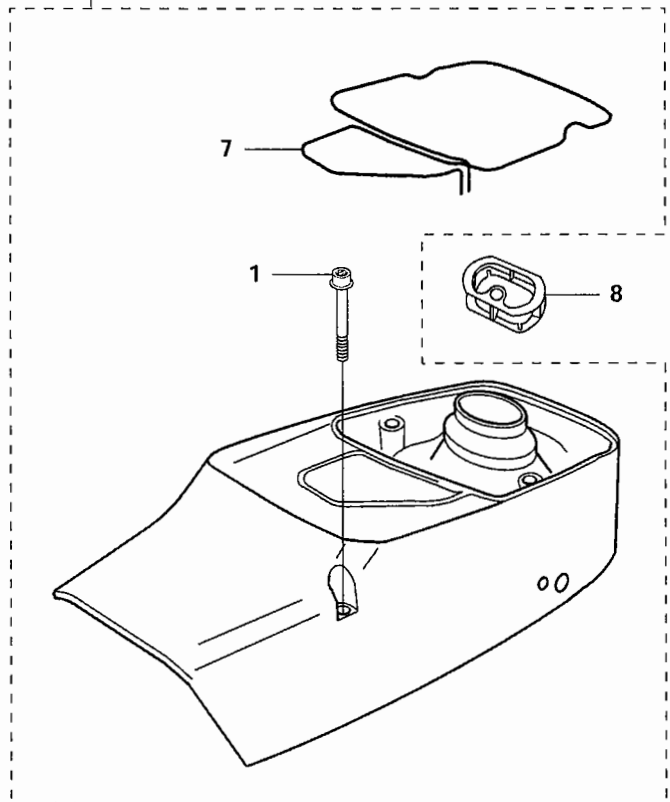
Page A
3122K

Pos.	Part No.	Description	Quantity	Notes	New Part
1	501 89 63-02	CLUTCH COVER ASSY	1	Incl. 2 - 6	
2	501 89 64-01	CLUTCH COVER	1		
3	505 26 76-50	DRAW PIECE	1		
4	501 24 81-01	LOCKING NUT	1		
5	503 13 57-01	CHAIN TENSION SCREW	1		
6	503 62 42-01	DECAL	1		
7	503 14 49-01	CLUTCH ASSY	1	Incl. 8	
8	503 14 51-01	CLUTCH SPRING	3		
9	506 25 49-03	GEAR WHEEL ASSY	1	Incl. 10	
10	503 25 38-01	NEEDLE BEARING	1		
11	506 28 59-01	SPACING SLEEVE	1		

B 3122K



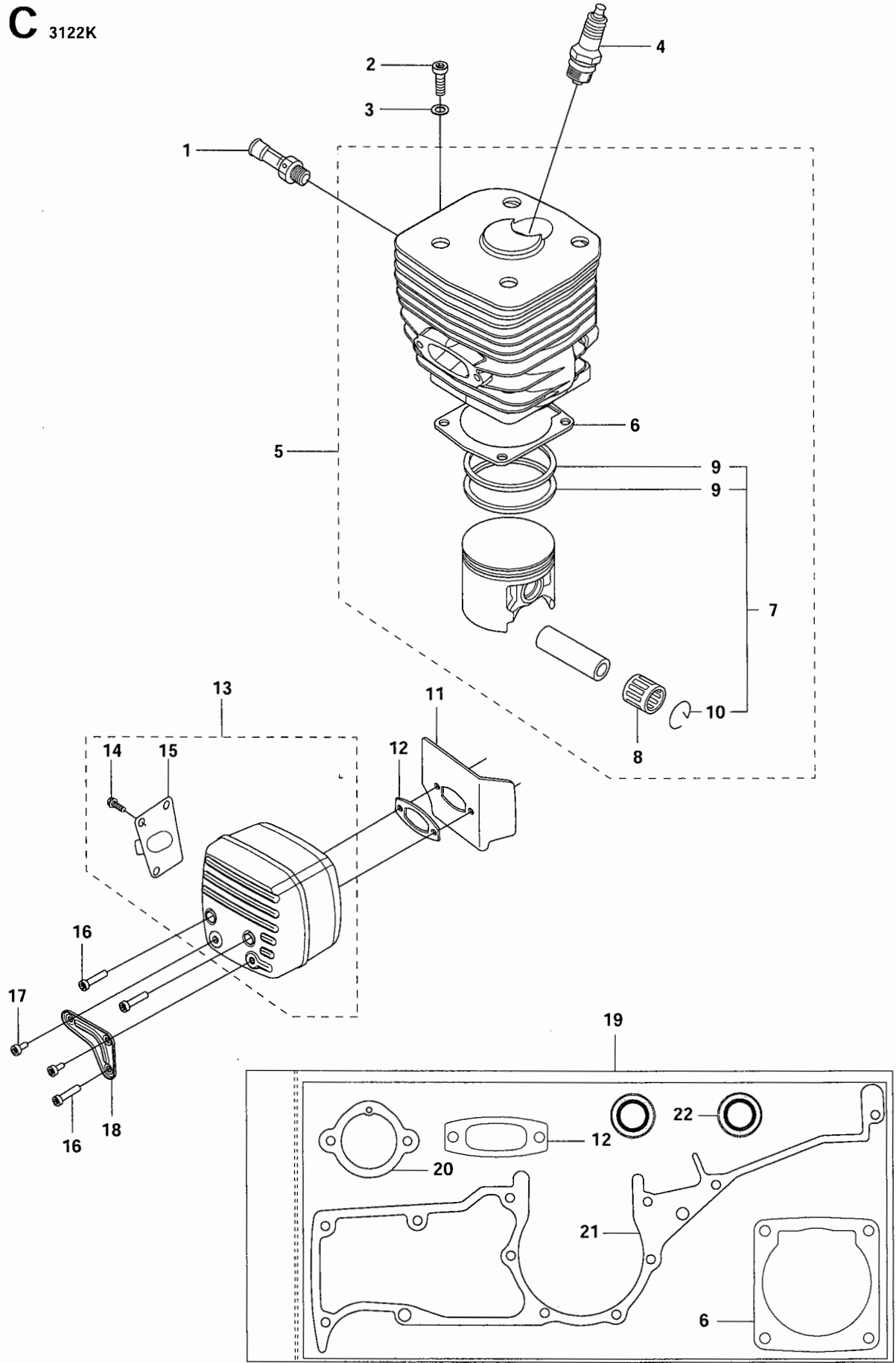
6



Page B
3122K

Pos.	Part No.	Description	Quantity	Notes	New Part
1	503 21 53-30	SCREW	6		
2	506 24 04-01	FILTER COVER	1		
3	506 26 86-01	PREFILTER	1		
4	506 24 05-01	FILTER BOTTOM	1		
5	506 24 98-02	AIR FILTER	1		
6	506 27 53-01	CYLINDER COVER	1	Incl. 1, 7	
7	506 28 39-30	SEALING	1		
8	506 25 03-01	INSERT	1		
9	577 29 92-01	LABEL	1		

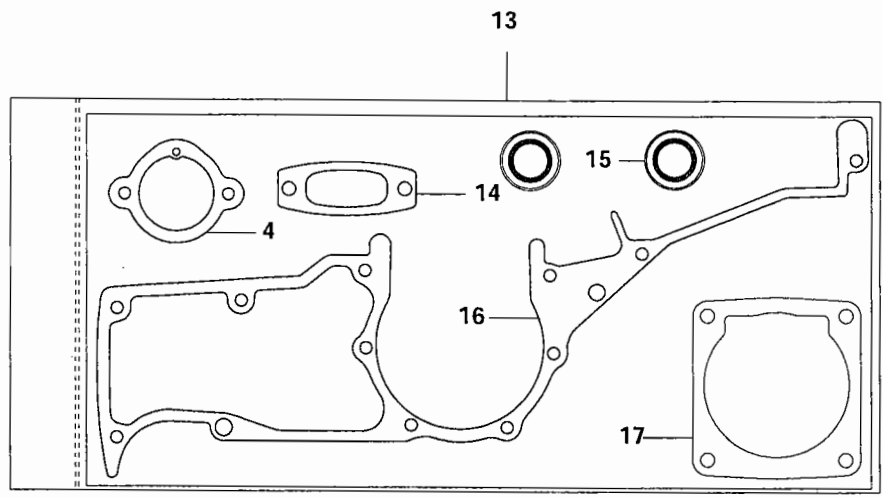
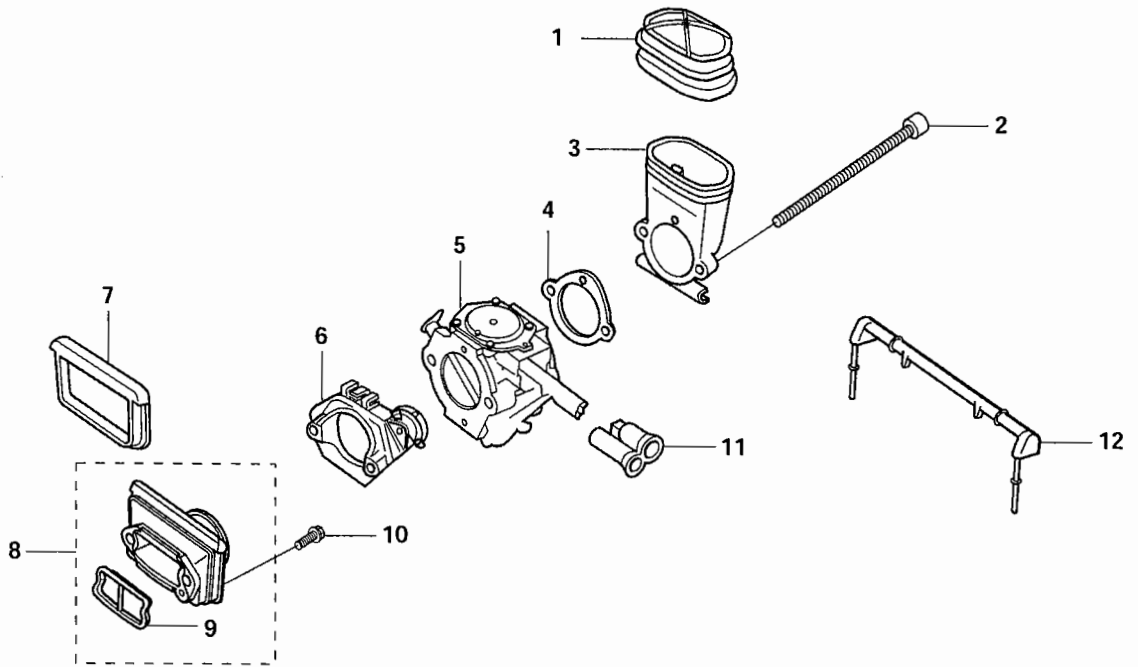
C 3122K



Page C
3122K

Pos.	Part No.	Description	Quantity	Notes	New Part
1	503 66 56-01	DECOMPRESSION VALVE	1		
2	516 00 24-01	SCREW	4		
3	503 23 00-05	WASHER	4		
4	503 23 51-09	SPARK PLUG	1	RCJ 6Y	
5	576 27 00-02	CYLINDER	1	Incl. 6 - 8	
6	503 13 46-01	GASKET	1		
7	501 89 41-03	PISTON CPL	1	Incl. 9 - 10	
8	503 13 29-01	NEEDLE HOLDER	1		
9	503 28 90-26	PISTON RING	2		
10	737 44 13-00	CIRCLIP	2		
11	506 34 14-01	COOLING PLATE	1		
12	503 13 13-05	GASKET MUFFLER	1		
13	505 41 79-01	MUFFLER	1	Incl. 14 - 15 <i>470837</i>	
14	574 56 04-01	SCREW	4		
15	505 41 90-01	EXHAUST DUCT	1		
16	544 21 84-20	SCREW	3		
17	503 21 53-12	SCREW	2		
18	502 85 08-01	MUFFLER SUPPORT	1		
19	506 29 24-03	GASKET KIT	1	Incl. 6, 12, 20 - 22	
20	506 27 43-02	GASKET	1		
21	503 13 45-01	CRANKCASE GASKET	1		
22	503 26 02-05	SEALING RING	2		

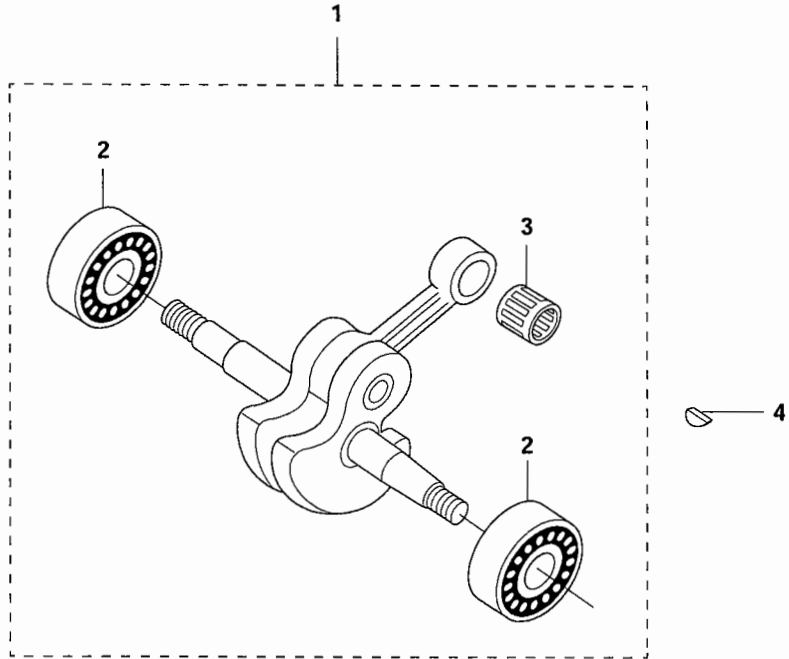
D 3122K



Page D
3122K

Pos.	Part No.	Description	Quantity	Notes	New Part
1	506 25 02-01	BELLOWS	1		
2	504 90 94-65	SCREW	2		
3	506 24 13-01	INLET BEND	1		
4	506 27 43-02	GASKET	1		
5	503 28 12-70	CARBURETTOR	1		
6	506 28 97-01	FLANGE	1		
7	503 14 37-01	SEALING	1		
8	506 27 52-02	FLANGE	1	Incl. 9	
9	506 31 38-01	INSERT	1		
10	503 21 53-20	SCREW	2		
11	506 25 46-01	CHISEL GUIDE	1		
12	506 25 04-01	SUPPORT	1		
13	506 29 24-03	GASKET KIT	1	Incl. 4, 14 - 17	
14	503 13 13-05	GASKET MUFFLER	1		
15	503 26 02-05	SEALING RING	2		
16	503 13 45-01	CRANKCASE GASKET	1		
17	503 13 46-01	GASKET	1		

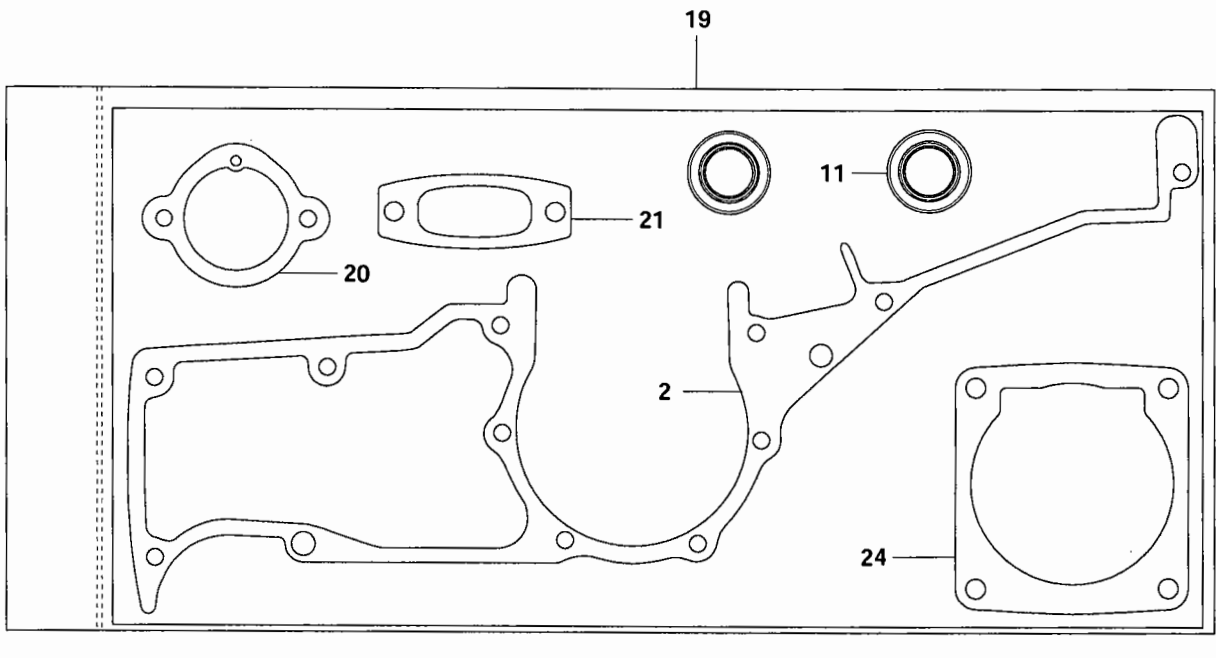
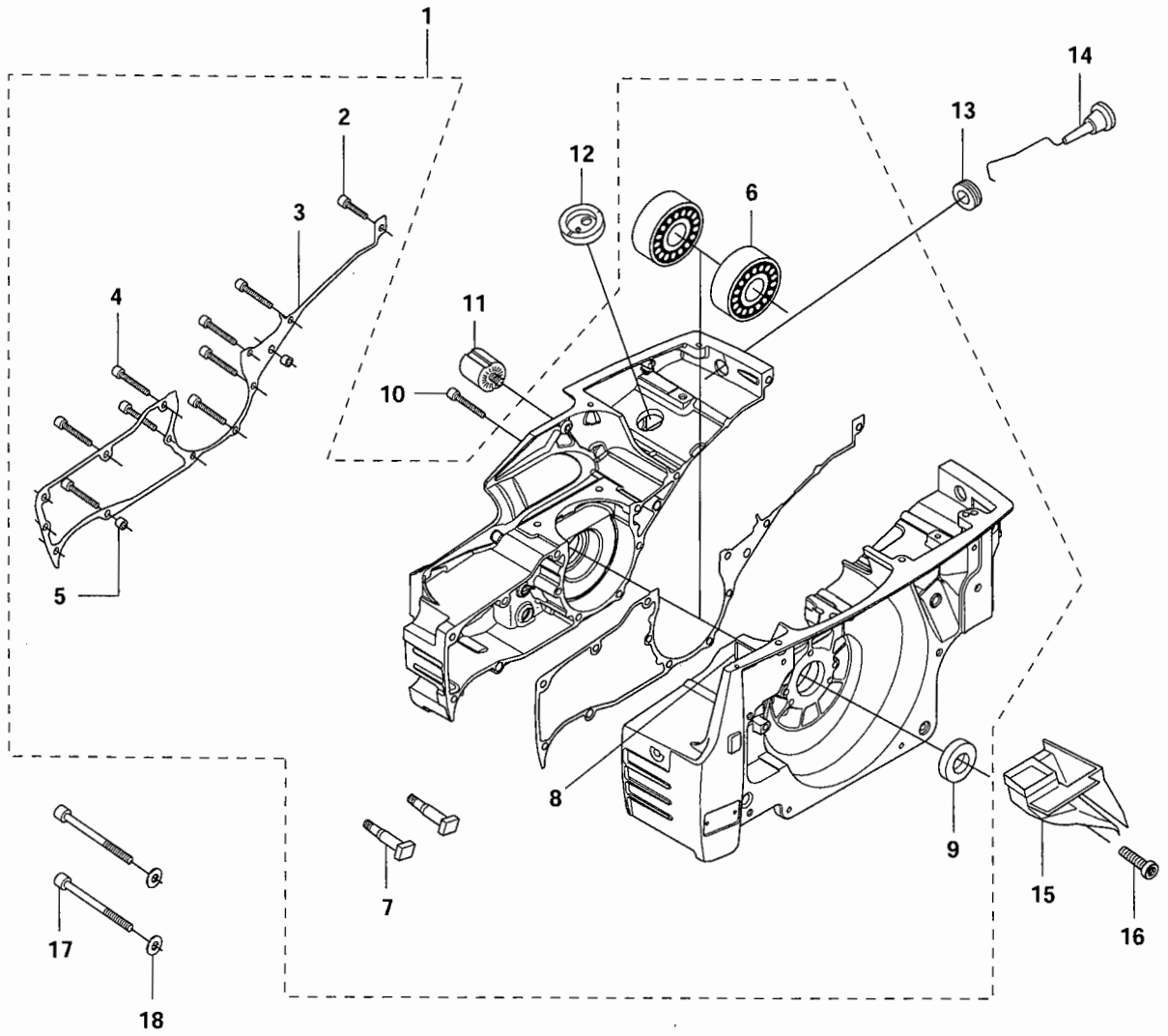
E 3122K



Page E
3122K

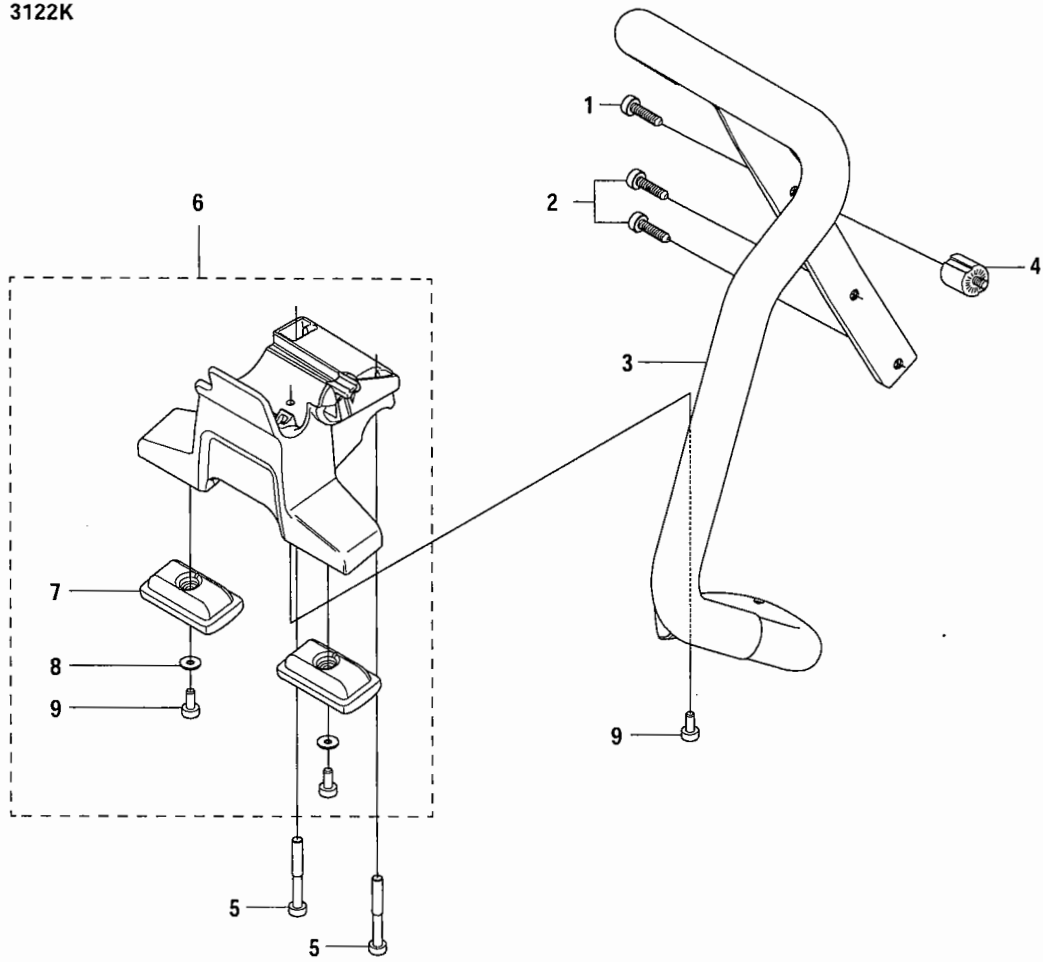
Pos.	Part No.	Description	Quantity	Notes	New Part
1	577 34 38-01	CRANKSHAFT ASSY	1	Incl. 2 - 3	
2	503 25 00-02	BALL BEARING	2		
3	503 13 29-01	NEEDLE HOLDER	1		
4	735 88 06-00	WOODRUFF KEY	1		

F 3122K



Pos.	Part No.	Description	Quantity	Notes	New Part
1	576 22 39-02	CRANKCASE	1	Incl. 2 - 9	
2	503 21 53-20	SCREW	1		
3	503 13 45-01	CRANKCASE GASKET	1		
4	503 21 53-41	SCREW	9		
5	501 27 08-01	GUIDE BUSHING	4		
6	503 25 00-02	BALL BEARING	2		
7	501 81 57-01	BAR BOLT	2		
8	721 42 06-00	PIN	1		
9	503 26 02-05	SEALING RING	2		
10	544 21 84-20	SCREW	1		
11	501 26 97-04	VIB.INSULATOR	1		
12	503 13 20-01	GROMMET	1		
13	503 14 54-02	GROMMET	1		
14	506 25 43-01	CHOKE CONTROL	1		
15	506 23 70-01	AIR NOZZLE	1		
16	503 21 53-12	SCREW	1		
17	503 21 53-25	SCREW	2		
18	503 23 00-11	WASHER	2		
19	506 29 24-03	GASKET KIT	1	Incl. 3, 9, 10 - 22	
20	506 27 43-02	GASKET	1		
21	503 13 13-05	GASKET MUFFLER	1		
22	503 13 46-01	GASKET	1		

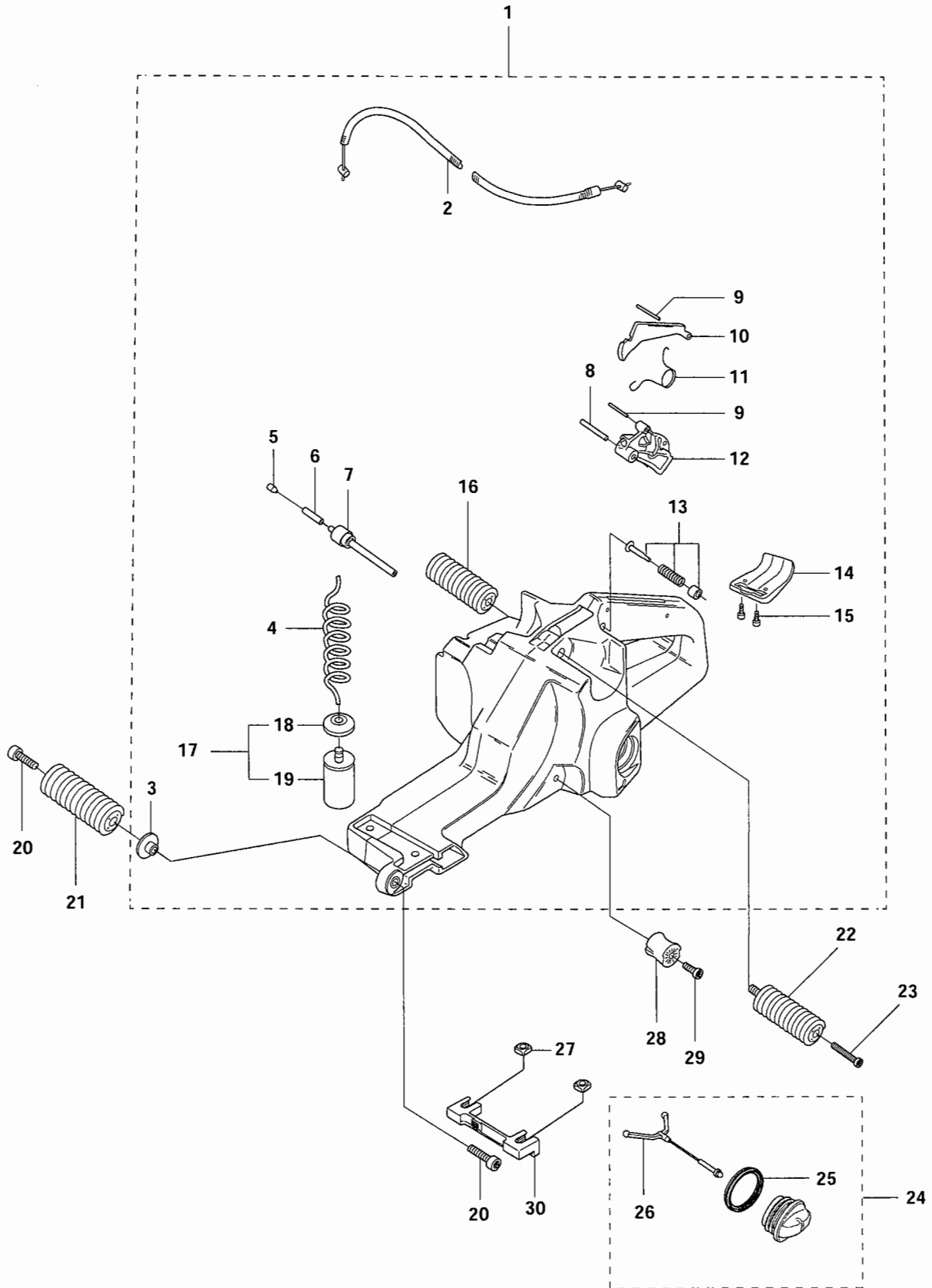
G 3122K



Page G
3122K

Pos.	Part No.	Description	Quantity	Notes	New Part
1	503 21 53-10	SCREW	1		
2	503 21 54-20	SCREW	2		
3	521 95 48-01	HANDLE	1		
4	501 26 97-04	ANTIVIBRATION ELEMENT	1		
5	544 21 84-47	SCREW	2		
6	525 82 04-01	GROUND SUPPORT	1	Incl. 7 - 9 470542	
7	544 81 16-01	BASE	2		
8	734 11 47-41	WASHER	2		
9	503 21 53-12	SCREW	3		

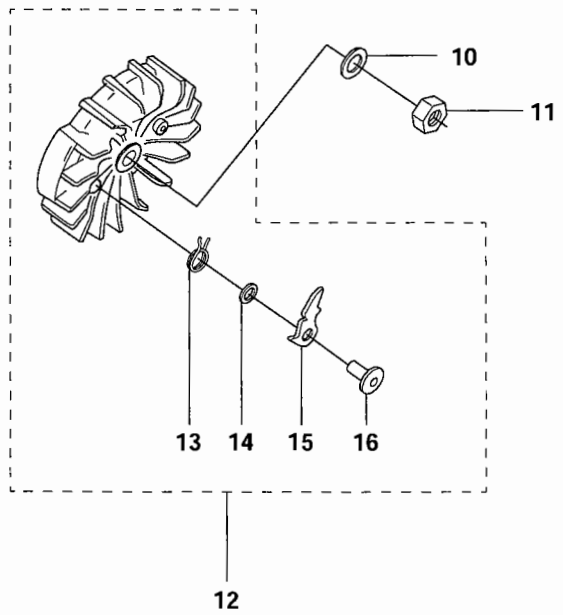
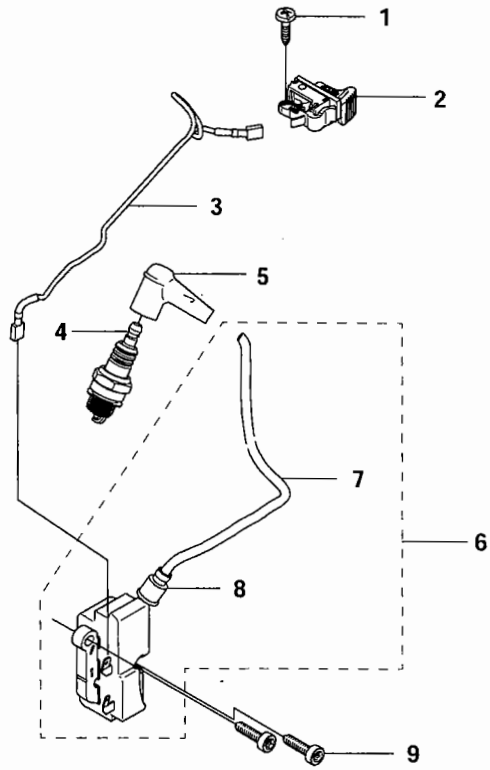
H 3122K



Pos.	Part No.	Description	Quantity	Notes	New Part
1	503 14 21-06	TANK UNIT ASSY	1	Incl. 1 - 15, 17	
2	506 28 98-01	THROTTLE WIRE	1		
3	503 14 08-01	BUSHING	1		
4	503 57 76-02	FUEL HOSE	1		
5	504 35 72-01	SINTER PLUG	1		
6	501 76 83-04	FUEL HOSE	1		
7	506 29 39-01	TANK WENT	1		
8	720 12 78-06	PIN	1		
9	720 12 40-20	PARALLEL PIN	1		
10	503 13 16-01	THROTTLE LOCKOUT	1		
11	503 13 18-01	SPRING	1		
12	503 13 36-01	THROTTLE LEVER	1		
13	503 14 23-01	THROTTLE CATCH	1		
14	506 23 34-01	SUPPORT	1		
15	503 21 45-16	SCREW	2		
16	503 13 26-02	AV-ELEMENT	1		
17	506 26 41-11	FUEL FILTER	1	Incl. 18 - 19	
18	506 27 11-01	HOSE CLAMP	1		
19	506 26 41-01	FUEL FILTER	1		
20	503 21 53-25	SCREW	2		
21	503 13 27-02	AV-ELEMENT	1		
22	503 13 25-02	AV-ELEMENT	1		
23	544 21 84-20	SCREW	2		
24	506 25 59-03	TANK CAP ASSY	1	Incl. 25 - 26	
25	506 29 21-01	GASKET	1		
26	503 57 89-01	HOLDER	1		
27	505 42 04-01	NUT	2		
28	501 81 47-01	ANTIVIBRATIONS ELEME	1		
29	503 21 53-12	SCREW	1		
30	574 51 22-01	NUT LOCKING	1		

J

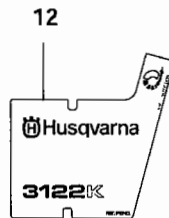
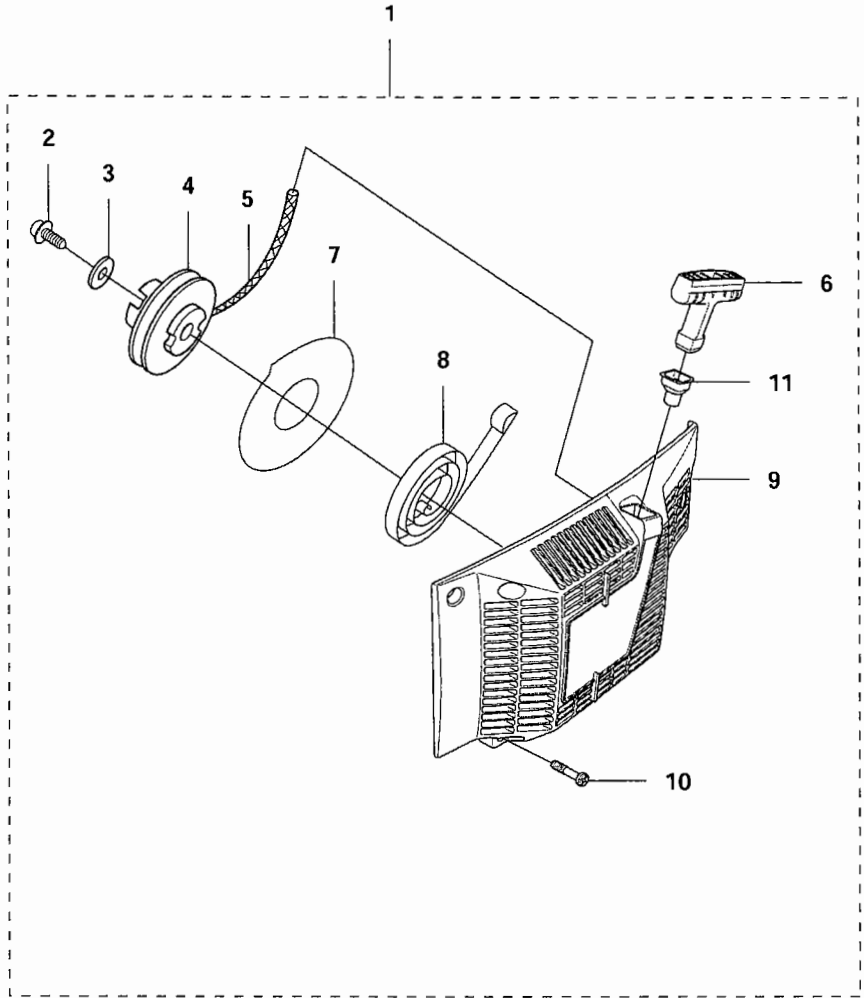
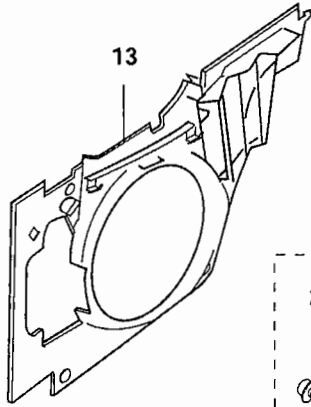
3122K



Page J
3122K

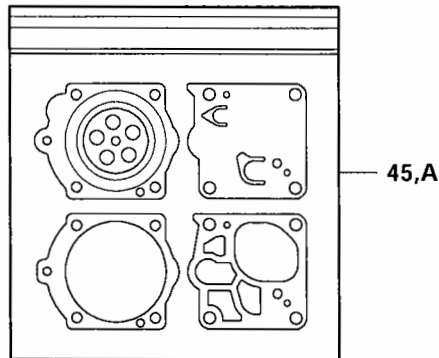
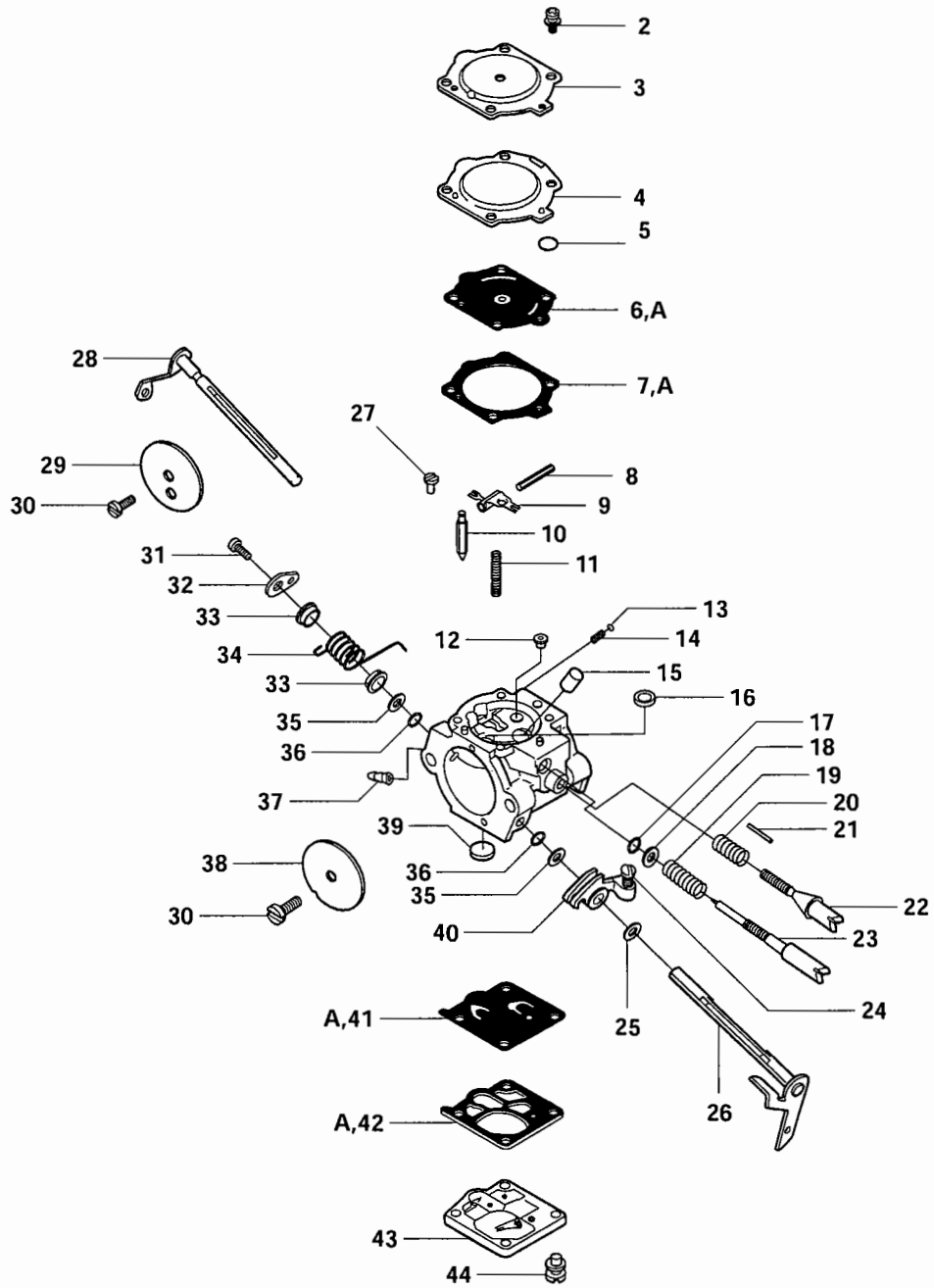
Pos.	Part No.	Description	Quantity	Notes	New Part
1	503 21 28-06	SCREW	1		
2	506 31 86-02	STOP SWITCH	1		
3	501 83 98-03	CABLE	1		
4	503 23 51-09	SPARK PLUG	1	RCJ 6Y	
5	501 48 54-02	SPARK PLUG CAP	1		
6	510 11 56-01	IGNITION MODULE	1	Incl. 7 - 8 470651	
7	506 38 78-34	IGNITION CABLE	1		
8	505 27 75-16	INSULATING CAP	1		
9	503 21 53-20	SCREW	2		
10	735 11 73-50	SPRING WASHER	1		
11	503 22 10-03	NUT	1		
12	522 89 20-04	FLYWHEEL ASSY	1	Incl. 13 - 16	
13	501 63 48-01	SPRING	2		
14	503 23 00-42	WASHER STEEL	2		
15	501 67 32-03	PAWL	2		
16	506 00 69-01	SCREW	2		

K 3122K



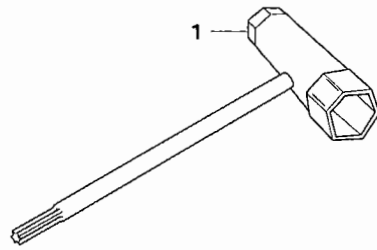
Page K
3122K

Pos.	Part No.	Description	Quantity	Notes	New Part
1	577 26 20-01	STARTER ASSY	1	Incl. 2 - 10	
2	503 21 06-16	SCREW	1		
3	503 23 43-02	WASHER	1		
4	501 89 67-01	STARTER PULLEY	1		
5	506 33 56-25	STARTER CORD	1		
5	506 33 56-50	STARTER CORD	1	50m	
6	503 54 39-01	STARTER HANDLE	1		
7	503 74 36-01	DAMPING DISC	1		
8	503 13 50-01	RECOIL SPRING ASSY	1		
9	501 89 66-01	STARTER HOUSING	1		
10	503 21 53-26	SCREW	1		
11	501 63 06-01	REINFORCEMENT SLEEVE	4		
12	577 32 76-01	LABEL	1		
13	501 89 59-02	AIR CONDUCTOR	1		

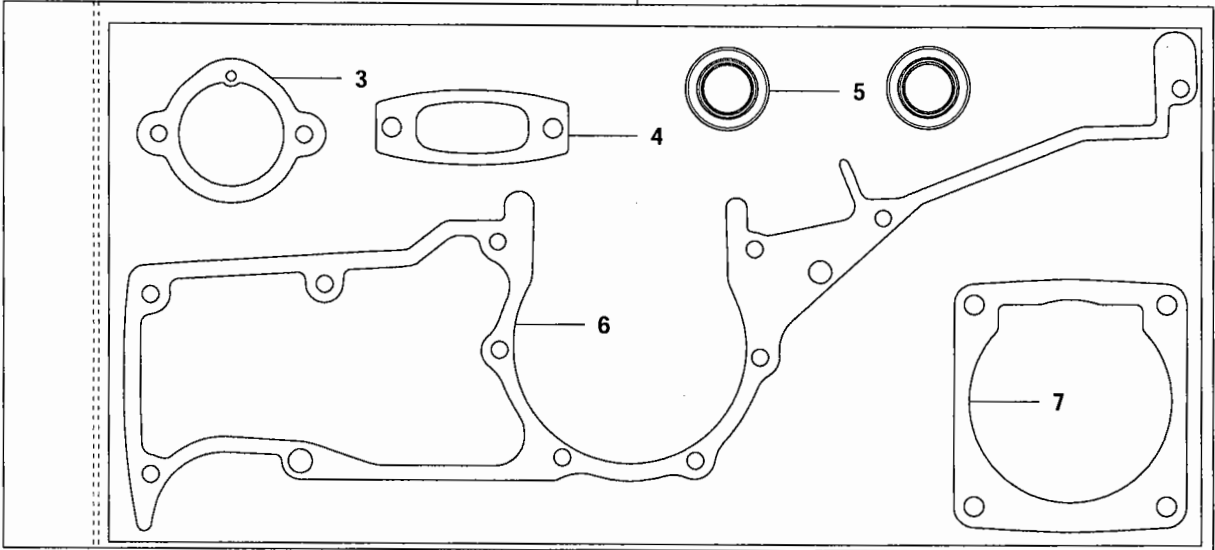


Pos.	Part No.	Description	Quantity	Notes	New Part
1	503 28 12-70	CARBURETTOR	1	Walbro WG-9A	
2	537 00 31-01	SCREW	1		
3	501 69 28-01	COVER-METERING DIAPH	1		
4	537 00 29-01	COVER	1		
5	537 00 28-01	RING	1		
6	503 63 28-01	DIAPHRAGM ASSY METER	1	Kit 45	
7	501 46 75-01	GASKET-METERING DIAP	1	Kit 45	
8	505 31 67-31	PIN-METERING LEVER	1		
9	505 31 67-34	LEVER-METERING	1		
10	503 56 34-01	VALVE INLET NEEDLE	1		
11	576 76 90-01	SPRING-METER.LEVER	1		
12	537 15 34-01	JET	1		
13	501 46 85-01	BALL-CHOKE FRICTION	1		
14	501 46 84-01	SPRING-CHOKE FRICT.	1		
15	503 97 66-01	NOZZLE ASSY	1		
16	503 57 42-01	PLUG-WELCH	1		
17	503 59 55-01	O-RING	1		
18	503 59 72-01	WASHER	1		
19	505 31 67-37	SPRING-NEEDLE	1		
20	503 63 31-01	SPRING	1		
21	503 52 60-01	PIN THROTTLE STOP	1		
22	503 63 29-01	SCREW IDLE SPEED	1		
23	503 63 32-01	NEEDLE IDLE SPEED	1		
24	503 59 65-01	SCREW	1		
25	506 02 83-01	WASHER	1		
26	503 59 59-01	SHAFT ASS'Y THROTTLE	1		
27	505 31 67-17	SCREW-LEVER PIN	1		
28	537 00 30-01	SHAFT ASS'Y	1		
29	503 52 58-01	VALVE CHOKE	1		
30	530 03 50-15	SCREW-VALVE	2		
31	503 19 22-01	SCREW PAN HD(M2.5x5)	1		
32	503 59 56-01	LEVER THROTTLE	1		
33	502 10 31-01	BUSHING-THROTT.SPR.	2		
34	503 52 59-01	SPRING THROTT RETURN	1		
35	505 31 67-48	WASHER	2		
36	503 56 45-01	SEAL-THROTTLE SHAFT	2		
37	503 59 84-01	FITTING FUEL INLET	1		
38	503 63 24-01	VALVE THROTTLE	1		
39	501 66 61-01	SCREEN-INLET	1		
40	503 59 57-01	LEVER THROTTLE INNER	1		
41	503 11 73-01	DIAPHRAGM-PUMP	1	Kit 45	
42	503 11 72-01	GASKET-PUMP	1	Kit 45	
43	503 59 58-01	COVER-PUMP	1		
44	503 11 75-01	SCREW-PUMP COVER	1		
45	503 59 74-02	GASKET KIT	1		

M 3122K



2



Page M
3122K

Pos.	Part No.	Description	Quantity	Notes	New Part
1	506 38 26-01	TOOL	1		
2	506 29 24-03	GASKET KIT	1	Incl. 3 - 7	
3	506 27 43-02	GASKET	1		
4	503 13 13-05	GASKET MUFFLER	1		
5	503 26 02-05	SEALING RING	2		
6	503 13 45-01	CRANKCASE GASKET	1		
7	503 13 46-01	GASKET	1		



Contents

Ultra Kut II Premixed Saw 14-inch / RRP# 713904 Common Spare Parts 1

Ultra Kut II Premixed Saw 14-inch / RRP# 713904 2

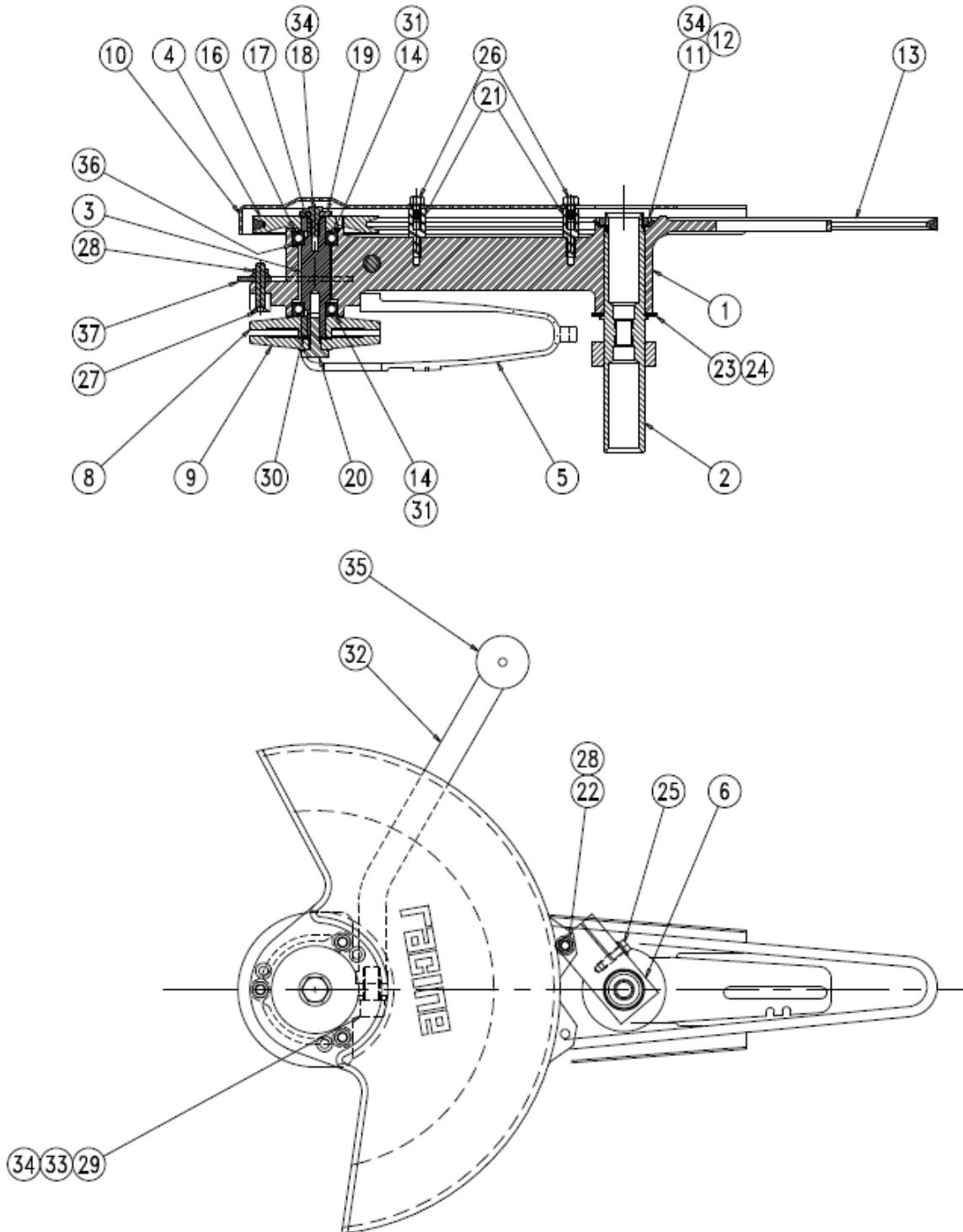
 Ultra Kut II Saw 14-inch / RRP# 713904 Parts List 3

Ultra Kut II Premixed Saw 14-inch / RRP# 713904 Common Spare Parts

Description	RRP Part Number
Belt	462156
Foam Filter	464619
Paper Filter	464620
Spark Plug	462254
2-cycle Oil (16oz)	462984
Metal Box	776810
Clamp	712992
Starter (recoil)	462623
Carb -	462462



Ultra Kut II Premixed Saw 14-inch / RRP# 713904





Ultra Kut II Saw 14-inch / RRP# 713904 Parts List

NO.	QTY.	DESCRIPTION	PART NO.
1	1	ARM	390647
2	1	HOUSING	390498
3	REF	SHAFT	390499
4	1	PULLEY	393615
5	1	GUARD	390501
6	1	CLAMP	393614
7			
8	1	FLANGE, DRIVEN	390649
9	1	FLANGE, OUTER	390650
10	1	GUARD, UKII 14 BELT	393624
11	1	NUT, LOCK: N-06	491604
12	1	WASHER, LOCK: WT-06	491605
13	1	BELT, 3VX445	465102
14	REF	BRG, BALL: .67 ID	461780
15			
16	REF	RING, RETAINING: 1.378 DIA INT	401238
17	1	KEY, SQ: .19 X .44	462191
18	1	SCR, HEX: .25-20 X .75 LH	491554
19	1	WASHER, FLT: .26	462369
20	1	SCREW	391328
21	2	SCREW, STANDOFF	392750
22	1	SCR, HEX FLG: .25-20 X 1.75	491620
23	3	WASHER, FLT: 1.25	456791
24	1	WASHER, FLT: 1.25	404883
25	1	SCR, HEX FLG: .25-20 X .75	491553
26	2	SCR, HEX FLG: .25-20 X .62	491179
27	3	SCR, SOC FLT: .25-20 X 1.5	491333
28	4	NUT, HEX FLG: .25-20	491543
29	1	WASHER, LOCK: .5	400909
30	1	KEY, SQ: .19 X .62	462192
31	AR	LOCTITE, 609	008804
32	1	HANDLE	713013
33	1	SCR, SOC: .5-13 X 1	400826
34	AR	LOCTITE, 242	008806
35	*	GRIP	462263
36	REF	WASHER, SPRING: 1.11	462368
37	1	PROTECTOR, BELT GUARD	393625
38			
39			
40			

* GRIP INCLUDED WITH ITEM #32, 713013



Ultra Kut 16-inch Parts List

Contents

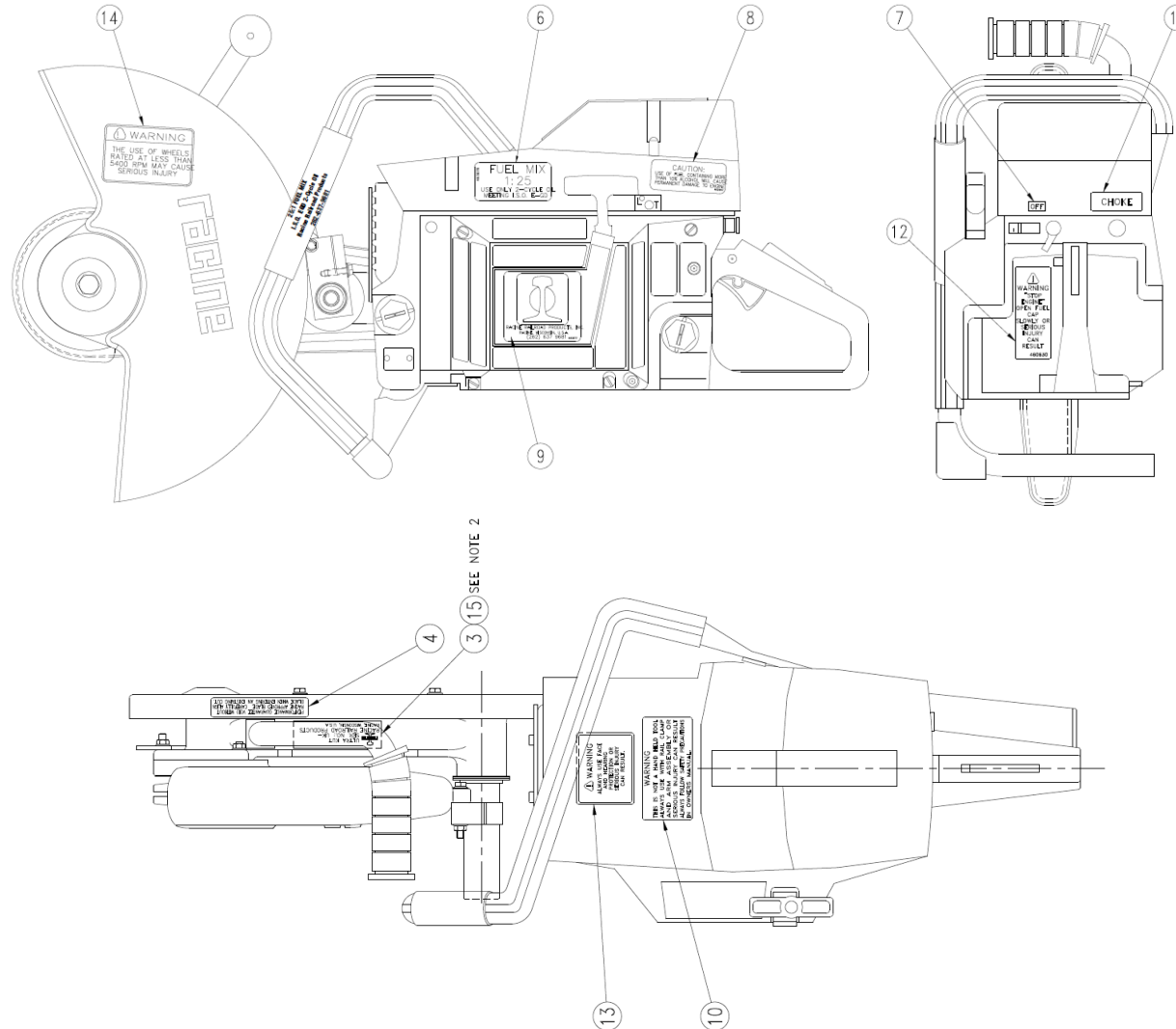
Common Spare Parts.....	1
Ultra Kut 16-inch Power Unit / RRP# 713870 Rev 5 7.20019	2
Ultra Kut 16-inch Power Unit / RRP# 713870 Rev 5 7.20019 Parts List.....	4
Ultra Kut 16-inch Powerhead / RRP# 719871 Rev 6 (2.2009)	5
Ultra Kut 16-inch Powerhead / RRP# 719871 Rev 6 (2.2009) Parts List.....	6
Ultra Kut 16-inch Arm / RRP# 713869 Rev 3 2.2007	7
Ultra Kut 16-inch Arm / RRP# 713869 Rev 3 2.2007 Parts List.....	8
Ultra Kut 16-inch Belt Kit / RRP# 792579 Rev B 4.2002	9
Ultra Kut 16-inch Belt Kit / RRP# 792579 Rev B 4.2002 Parts List.....	9
Ultra Kut 16-inch Rail Clamp / RRP# 712992 Rev 6 8.2001	10
Ultra Kut 16-inch Rail Clamp / RRP# 712992 Rev 6 8.2001 Parts List.....	12

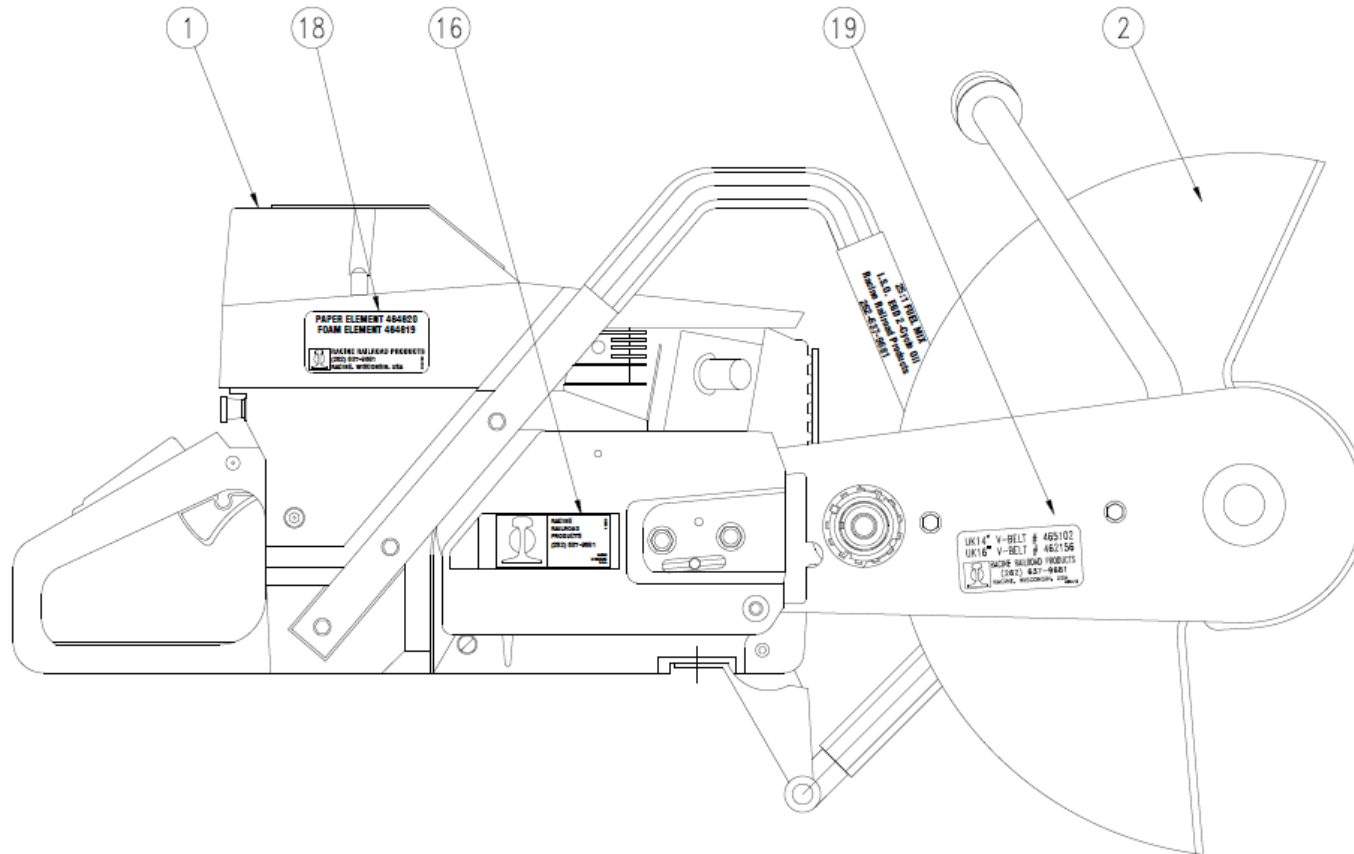
Common Spare Parts

Description	RRP Part Number
Belt	462156
Foam Filter	464619
Paper Filter	464620
Spark Plug	462254
2-cycle Oil (16oz)	462984
Metal Box	776810
Clamp	712992
Starter (recoil)	462623
Carb -	462462



Ultra Kut 16-inch Power Unit / RRP# 713870 Rev 5 7.20019







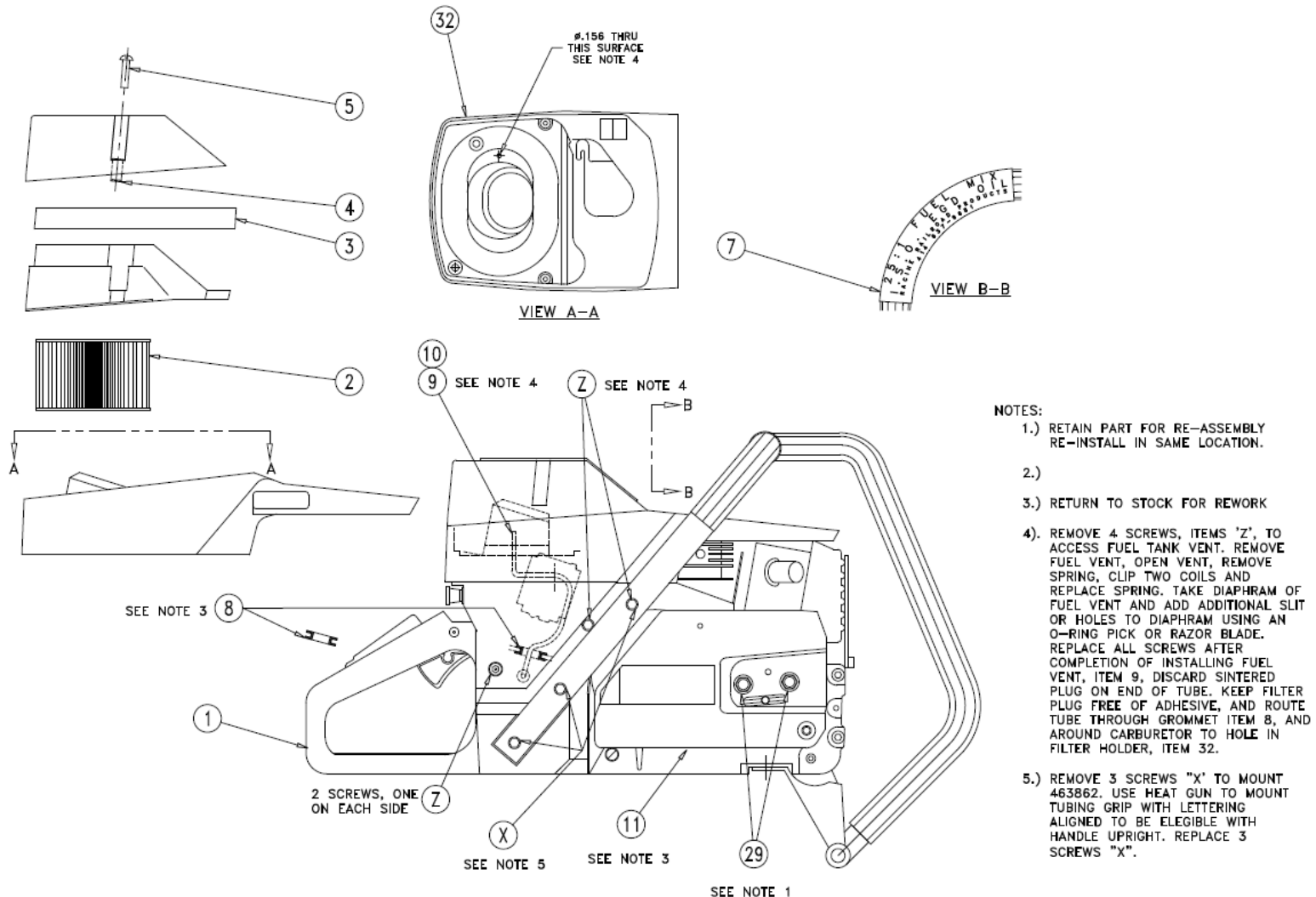
Ultra Kut 16-inch Power Unit / RRP# 713870 Rev 5 7.20019 Parts List

NO.	QTY.	DESCRIPTION	PART NO.
1	1	POWERHEAD, UKII PM	713871
2	1	ARM, UKII 16	713869
3	1	PLACARD, SERIAL NUMBER: ULTRA KUT	461836
4	1	DECAL, PERFORMANCE GUARANTEE VOID W/O...	457350
5			
6	1	DECAL, FUEL MIX 25:1	463676
7	1	DECAL, OFF	458330
8	1	DECAL, CAUTION: USE OF FUEL CONTAINING...	462987
9	1	DECAL, LOGO: 3 W X 2.75 H RRP	463677
10	1	DECAL, WARNING: THIS IS NOT A HAND HELD TOOL...	460226
11	1	DECAL, CHOKE	460424
12	1	DECAL, WARNING: STOP ENGINE, OPEN FUEL CAP...	460630
13	1	DECAL, WARNING: ALWAYS USE FACE AND HEARING...	460631
14	1	DECAL, WARNING: THE USE OF WHEELS RATED LESS THAN 4800...	462249
15	AR	SEALANT, SILICONE	008800
16	1	DECAL, LOGO: 2.75 W X 1.25 H RRP	462418
17			
18	1	DECAL, UKII AIR FILTERS	464760
19	1	PLACARD, UKII V-BELTS	465115

FOR SERVICE ONLY

ITEM	QTY	DESCRIPTION	PART NO.
1	1	KIT, FLANGE	792727

Ultra Kut 16-inch Powerhead / RRP# 719871 Rev 6 (2.2009)





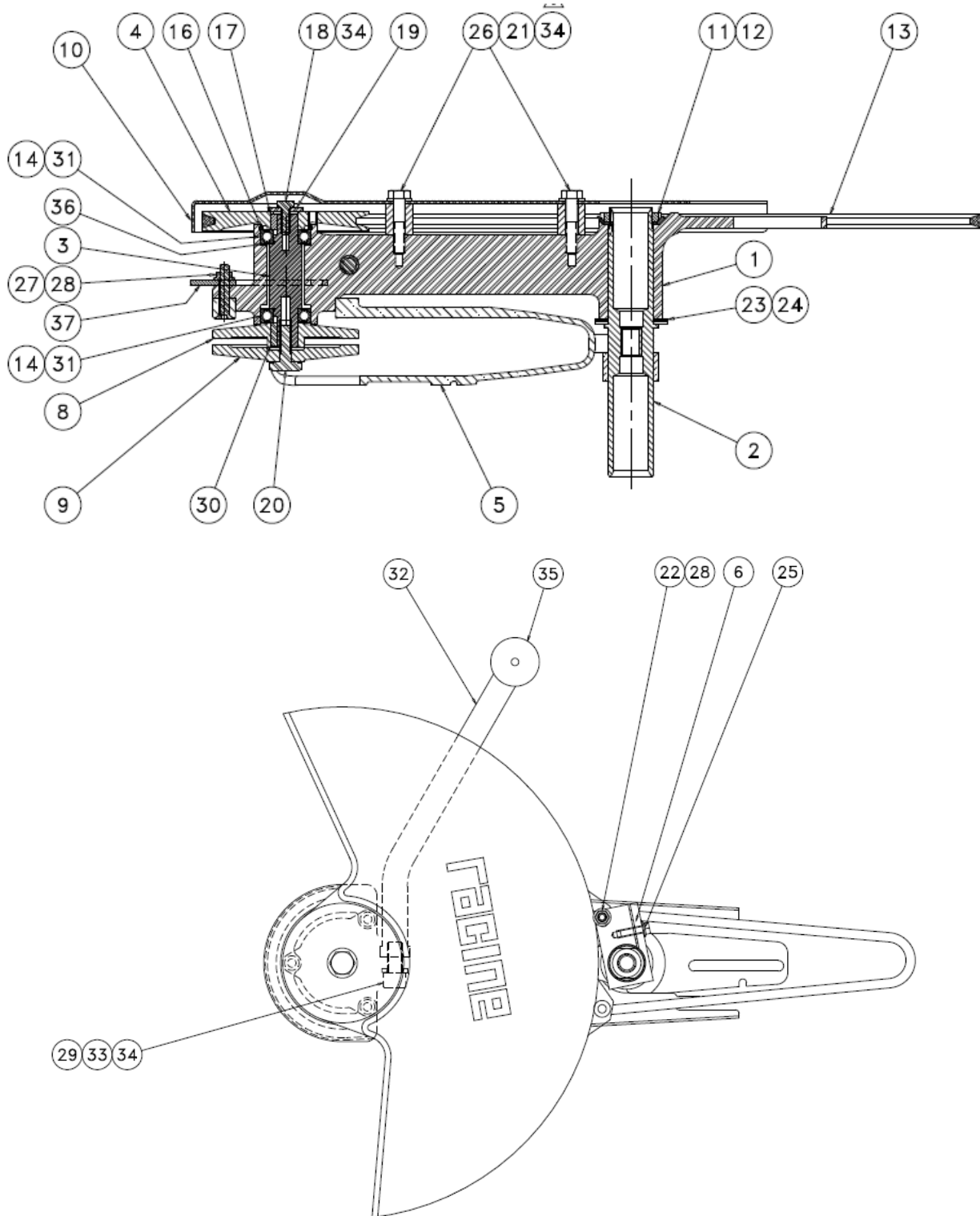
Ultra Kut 16-inch Powerhead / RRP# 719871 Rev 6 (2.2009) Parts List

NO.	QTY.	DESCRIPTION	PART NO.
1	1	ENGINE, UKII PREMIX	393510
2	REF	FILTER, PAPER	464620
3	REF	FILTER, PAPER	464619
4	2	RETAINER, SCREW	393104
5	REF	SCREW	
6			
7	1	TBG, UK PREMIX	463862
8	1	GROMMET	391313
9	1	HOSE END, .12 ID HOSE X 10-32	467055
10	12	TUBING, VACUUM	004143
11	1	COVER, CLUTCH	393834
12			

ITEMS TO BE DISASSEMBLED			
NO.	QTY.	DESCRIPTION	PART NO.
25	2	NUT, ARM MOUNT	462723
26			
27			
28			
29			
30			
31			
32	1	HOUSING, FILTER	
33			
34			
35			



Ultra Kut 16-inch Arm / RRP# 713869 Rev 3 2.2007



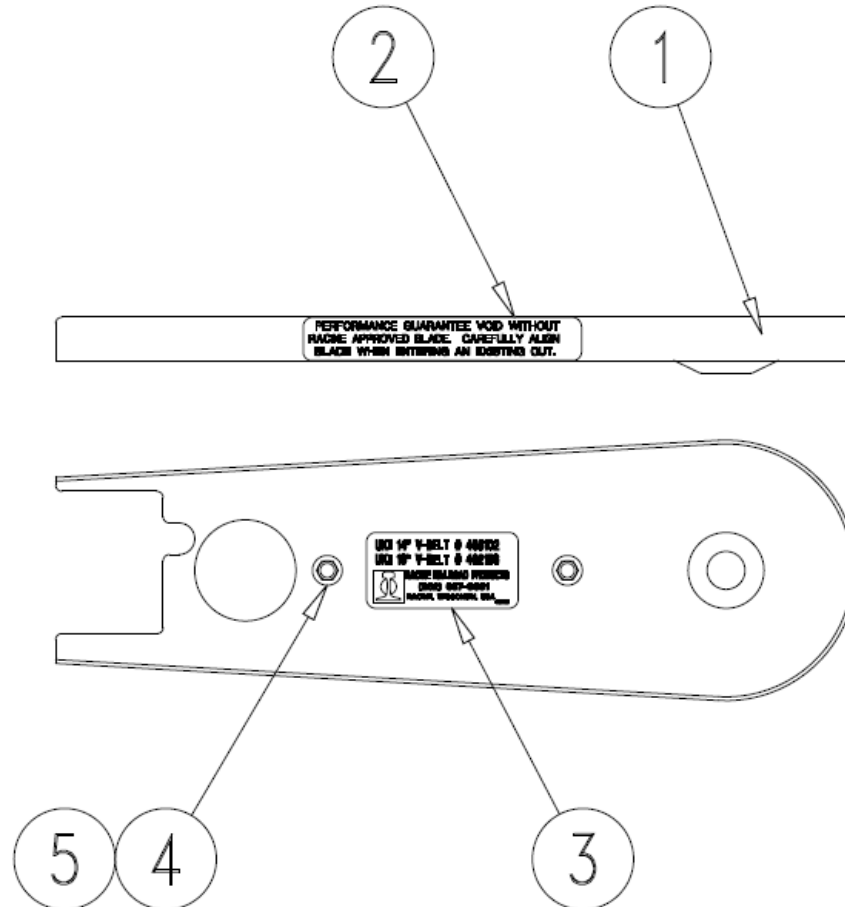


Ultra Kut 16-inch Arm / RRP# 713869 Rev 3 2.2007 Parts List

NO.	QTY.	DESCRIPTION	PART NO.
1	1	ARM	390647
2	1	HOUSING	390498
3	1	SHAFT	390499
4	1	PULLEY	390500
5	1	GUARD	390773
6	1	CLAMP	391287
7			
8	1	FLANGE, KEYED	390649
9	1	FLANGE	390650
10	1	GUARD, UKII 16 BELT	393509
11	1	NUT, LOCK: N-06	491604
12	1	WASHER, LOCK: WT-06	491605
13	1	BELT, 3VX450	462156
14	2	BRG, BALL: .67 ID	461780
15			
16	1	RING, RETAINING: 1.378 DIA INT	401238
17	1	KEY, SQ: .19 X .44	462191
18	1	SCR, HEX: .25-20 X .75 LH	491554
19	1	WASHER	462369
20	1	SCREW	391328
21	2	WASHER, FLT: .31	491259
22	1	SCR, HEX FLG: .25-20 X 1.75	491620
23	3	WASHER, FLT: 1.25	456791
24	1	WASHER, FLT: 1.25	404883
25	1	SCR, HEX FLG: .25-20 X .75	491553
26	2	SCR, HEX: .31-24 X 1.5	402605
27	3	SCR, SOC FLT: .25-20 X 1.5	491333
28	4	NUT, HEX ES: .25-20	491232
29	1	WASHER, LOCK: .5	400909
30	1	KEY, SQ: .19 X .62	462192
31	AR	LOCTITE, 609	008804
32	1	HANDLE	713013
33	1	SCR, SOC: .5-13 X 1	400826
34	AR	LOCTITE, 242	008806
35	*	GRIP	462263
36	1	WASHER, SPRING: 1.11	462368
37	1	PROTECTOR, BELT GUARD	393091
38			
39			
40			



Ultra Kut 16-inch Belt Kit / RRP# 792579 Rev B 4.2002

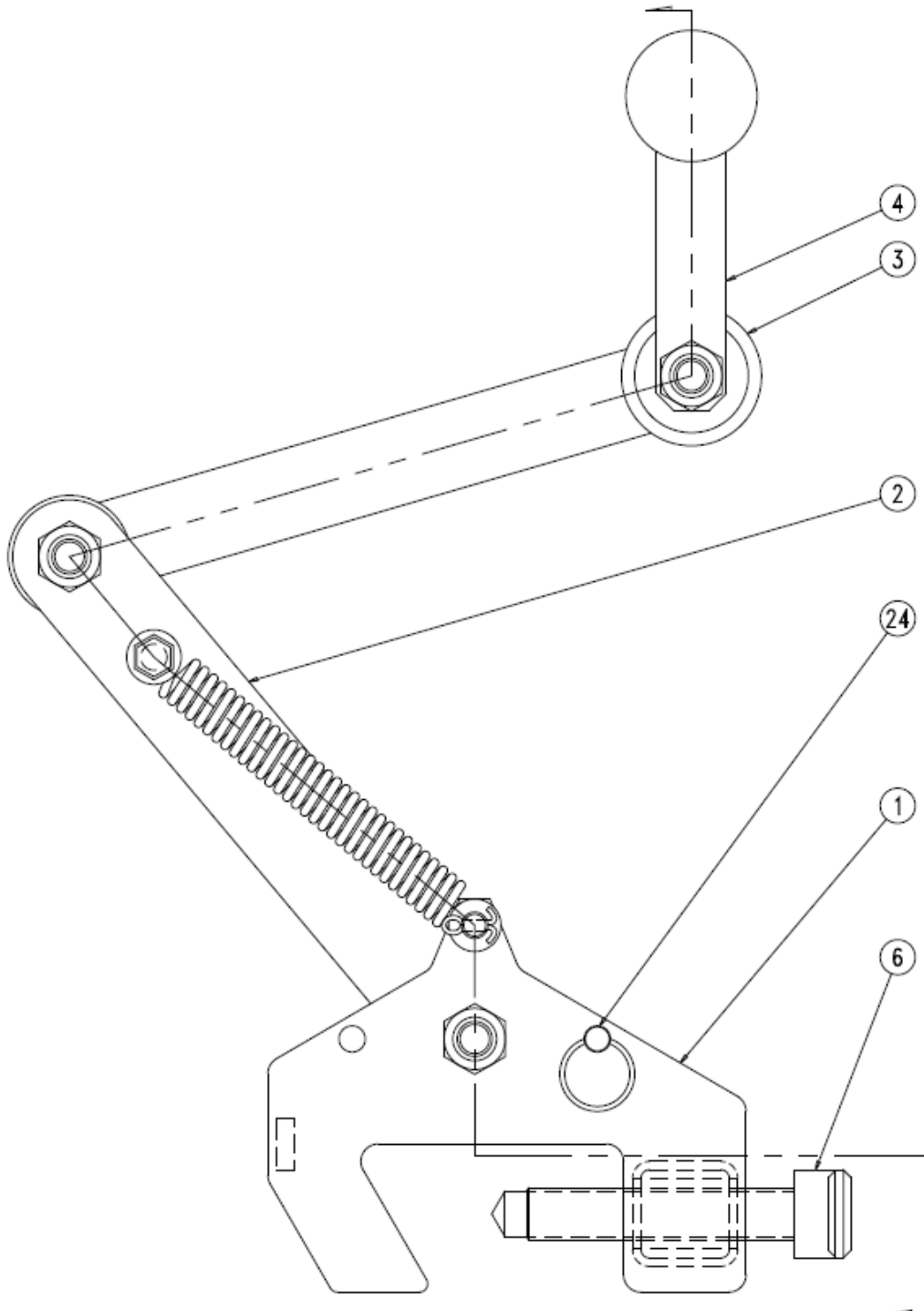


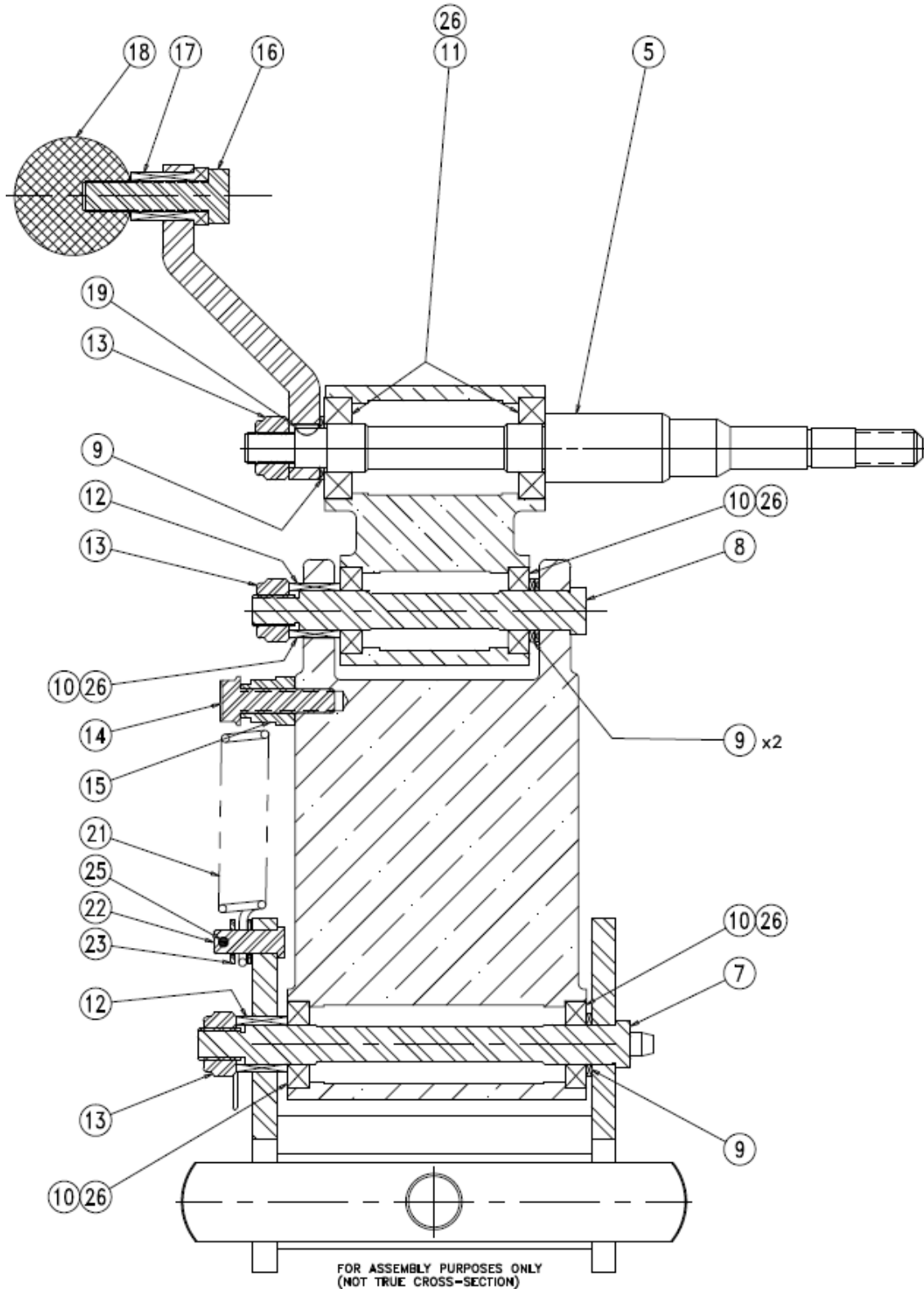
Ultra Kut 16-inch Belt Kit / RRP# 792579 Rev B 4.2002 Parts List

NO.	QTY.	DESCRIPTION	PART NO.
1	1	GUARD, UKII 16 BELT	393509
2	1	DECAL, PERFORMANCE GUARANTEE VOID W/O...	457350
3	1	PLACARD, UKII V-BELTS	465115
4	3	SCR, HEX FLG: .25-20 X 1.25	491612
5	3	SPACER	391329



**Ultra Kut 16-inch Rail Clamp / RRP# 712992 Rev 6
8.2001**







Ultra Kut 16-inch Rail Clamp / RRP# 712992 Rev 6 8.2001 Parts List

NO.	QTY.	DESCRIPTION	PART NO.
1	1	CLAMP WELDMENT	777460
2	1	ARM,CLAMP	390642
3	1	ARM, SPINDLE	390685
4	1	ARM, SCREW	390597
5	1	SPINDLE	390585
6	1	CLAMP	712991
7	1	SHAFT	388462
8	1	SHAFT	388463
9	4	BUSHING, DRILL: .62 ID	403183
10	4	BRG, BALL: .62 ID	460679
11	2	BRG, BALL: .75 ID	459272
12	2	SPACER	388464
13	3	NUT, HEX ES JAM: .5-13 HVY	403900
14	1	SCR, HEX FLG: .38-16 X 1.5	461833
15	1	SPACER	390627
16	1	SCR, HEX: .5-20 X 2	405366
17	1	BUSHING	390599
18	1	KNOB, PLASTIC	401703
19	1	KEY, WOODRUFF: #213	491137
20			
21	1	SPRING, TENSION	462152
22	1	PIN,CLEVIS	391309
23	2	WASHER	387087
24	1	PIN, HITCH: .38 X 6.38	462230
25	1	PIN, COTTER: .12 X .75	491347
26	AR	LOCTITE, 609	008804